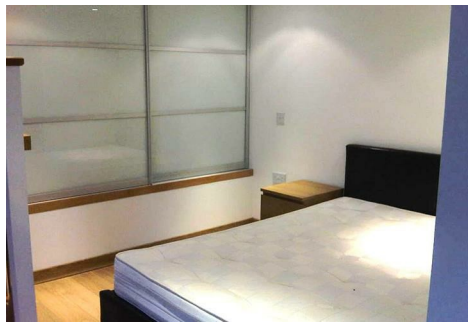
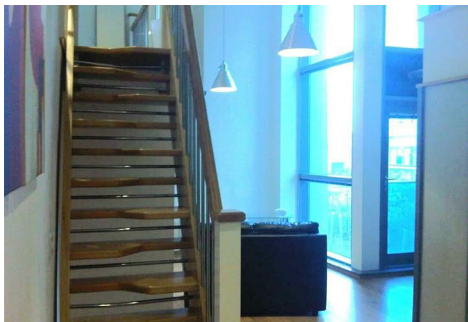




Stoneacre
Properties



Citispace, Leeds, LS2 7QN
£695 Per Calendar Month

Stoneacre Properties are pleased to offer to let a one double bedroom duplex apartment located in Citispace, Leeds City Centre. The second floor apartment features two levels boasting spacious accommodation. The accommodation briefly comprises of: Large lounge featuring opening kitchen; separate dining area; stairs leading to... bedroom featuring fitted wardrobes. The property is provided fully furnished.

Available Early July 2025!

GENERAL ASPECT

LOUNGE

KITCHEN AREA

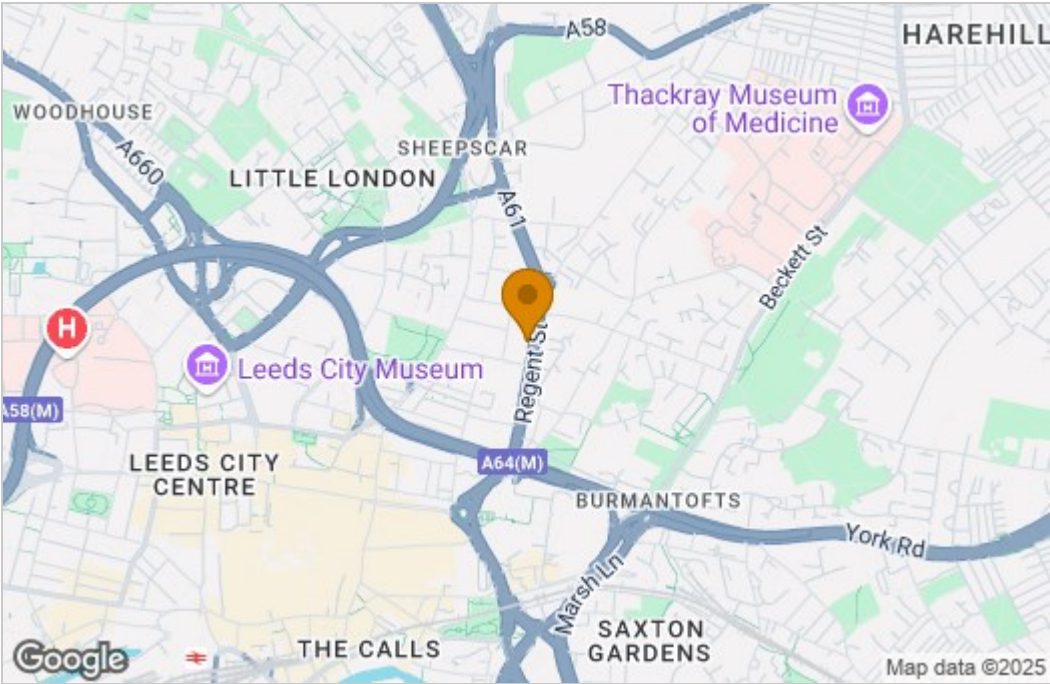
DINING AREA

SEPARATE BAR AREA

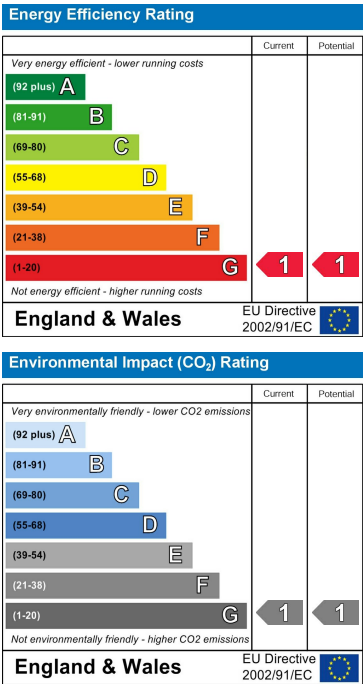
BEDROOM

Floor Plan

Area Map



Energy Efficiency Graph



These particulars, whilst believed to be accurate are set out as a general outline only for guidance and do not constitute any part of an offer or contract. Intending purchasers should not rely on them as statements of representation of fact, but must satisfy themselves by inspection or otherwise as to their accuracy. No person in this firm's employment has the authority to make or give any representation or warranty in respect of the property.

