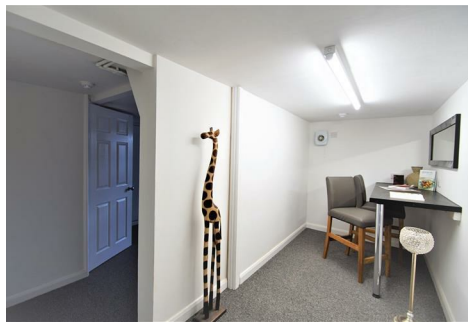




Stoneacre
Properties



Austhorpe Road, Leeds, LS15 8EJ

£795

Stoneacre Properties are delighted to offer to let this superb one bedroom flat that has just benefitted from a full upgrade. Situated in an ideal location close to Manston Park and the local shops & shopping centre at Crossgates. This beautiful flat is very spacious and includes a useful office area and free private parking at the rear of the property. Temple Newsam isn't far from the property and is the ideal place to go for a run, walk or cycle, furthermore there is the Temple Newsam golf course that's nearby as well. Crossgates Train Station is within close proximity from the property and offers travel into Leeds City Centre, Manchester, Doncaster, York, Selby, Scarborough as well as a variety of other locations.

RENT INCLUDES WATER RATES, GAS HOT WATER and COUNCIL TAX

Available Early August! Unfurnished.

Open Plan Kitchen/Living Space

Office Area

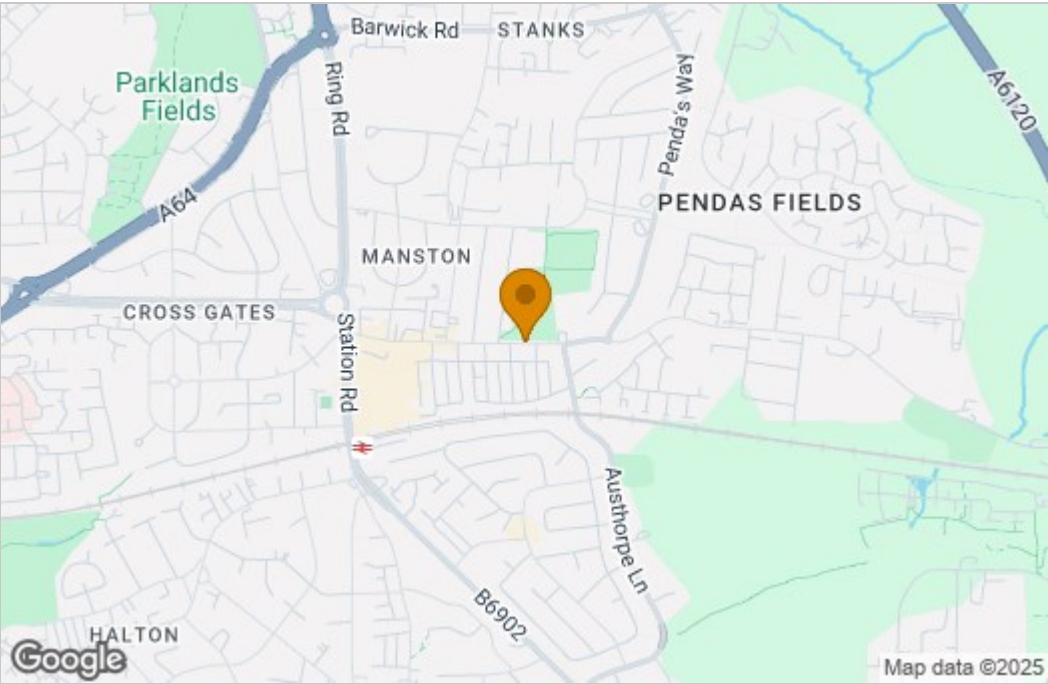
Bedroom One

Shower Room

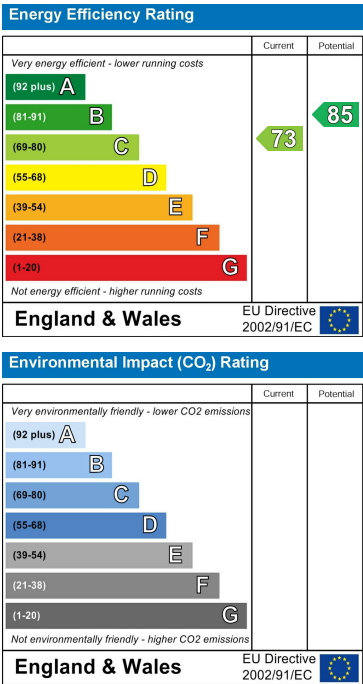
External

Floor Plan

Area Map



Energy Efficiency Graph



These particulars, whilst believed to be accurate are set out as a general outline only for guidance and do not constitute any part of an offer or contract. Intending purchasers should not rely on them as statements of representation of fact, but must satisfy themselves by inspection or otherwise as to their accuracy. No person in this firms employment has the authority to make or give any representation or warranty in respect of the property.