



**Stoneacre**  
Properties



## **Hadleigh Court, Leeds, LS17 6DP**

### **£995 Per Calendar Month**

Stoneacre Properties are delighted to offer To Let this spacious second floor apartment located at Moortown Corner of LS17.

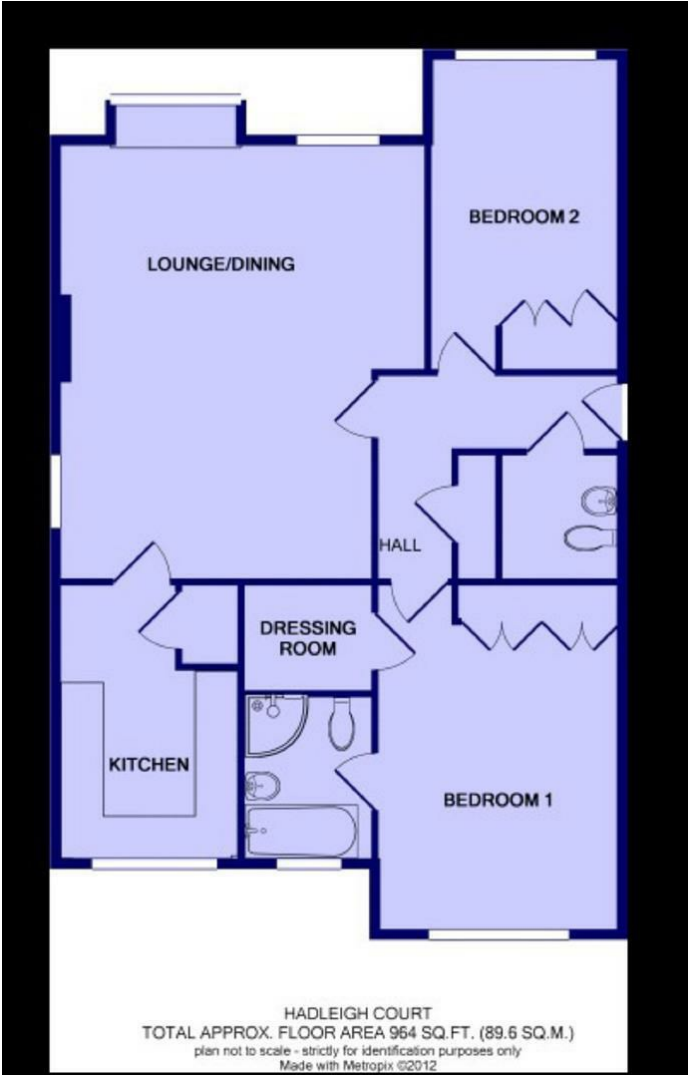
This two bedroom apartment is perfect for anyone wanting to live within walking distance of amenities and regular bus services from Harrogate Road. Comprising of; Entrance hall leading into a spacious lounge/dining area; Kitchen with white goods; Master bedroom with En-Suite; Second double bedroom and a house W/C. The apartment is extremely well presented and has been beautifully maintained. The property also come with a single garage and secure private parking!

Viewings are highly recommended. Available NOW!

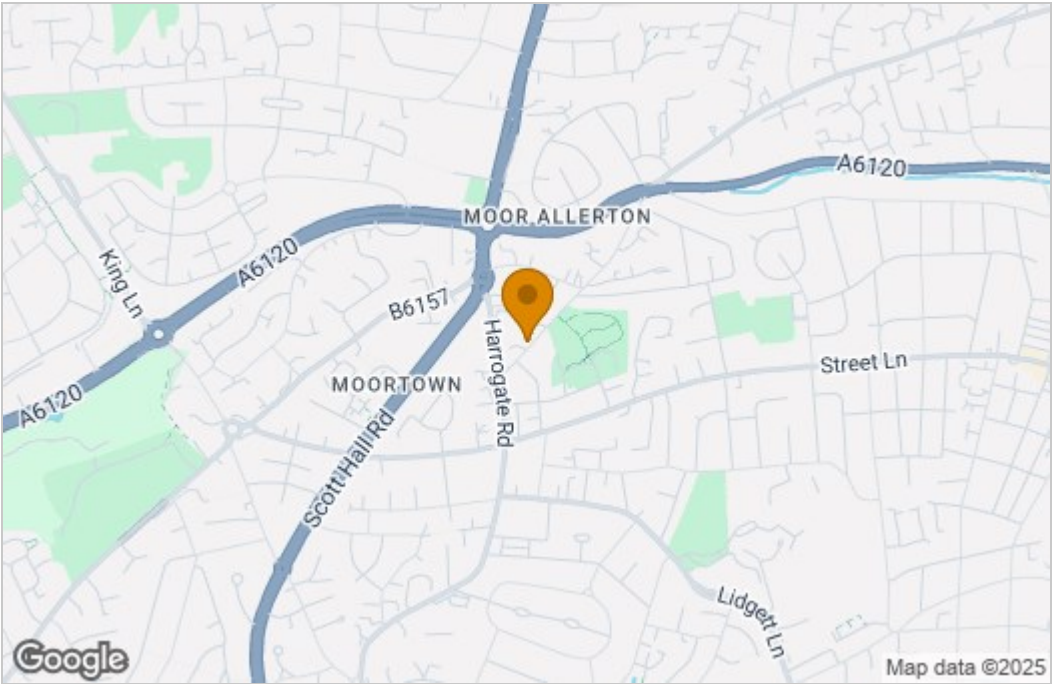
Current photos are 5 years old - \*\*\*NEW PHOTOS COMING SOON\*\*\*



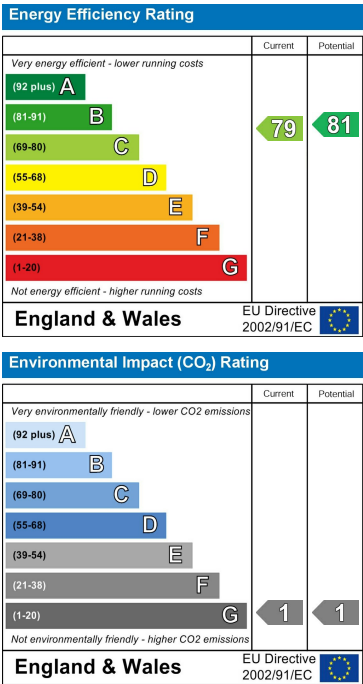
Floor Plan



Area Map



Energy Efficiency Graph



These particulars, whilst believed to be accurate are set out as a general outline only for guidance and do not constitute any part of an offer or contract. Intending purchasers should not rely on them as statements of representation of fact, but must satisfy themselves by inspection or otherwise as to their accuracy. No person in this firm's employment has the authority to make or give any representation or warranty in respect of the property.

