



Stoneacre
Properties



Methley Terrace

Leeds, LS7 3NL

£257,500



Methley Terrace

Leeds, LS7 3NL

£257,500



Entrance

Entering the property you are welcomed into the living room with stairs leading up to the first floor and stairs down to the kitchen.

Living Room

A very generous sized living room offering an abundance of space for seating and a dining space. The room boasts some wonderful period features including coving and ceiling roses.

Kitchen

Situated to the lower ground floor, this spacious kitchen is made up of wall and base units with space for washing machine and fridge/freezer. Double glazed window allows plenty of natural light to flood in to the kitchen.

Bedroom 1

Spacious double bedroom situated to the first floor with ample space for bedroom furniture.

Bedroom 2

Second double bedroom situated to the second floor.

Bedroom 3

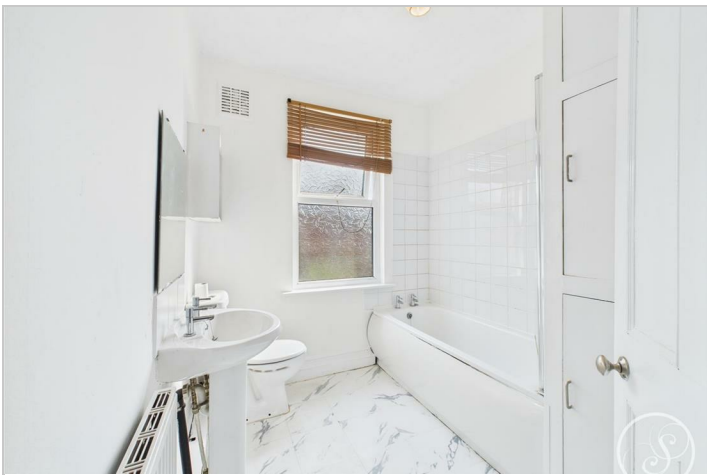
Single bedroom but also ideal as an office.

Bathroom

Situated to the first floor with shower over bath, toilet and sink.

External

To the front of the property is a private courtyard garden.



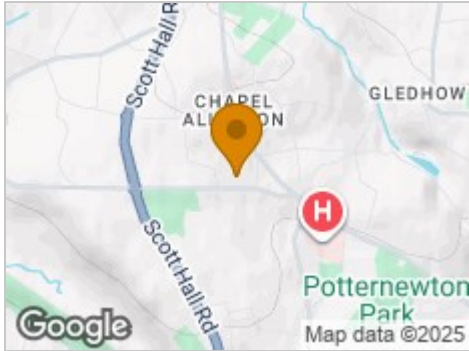
Road Map



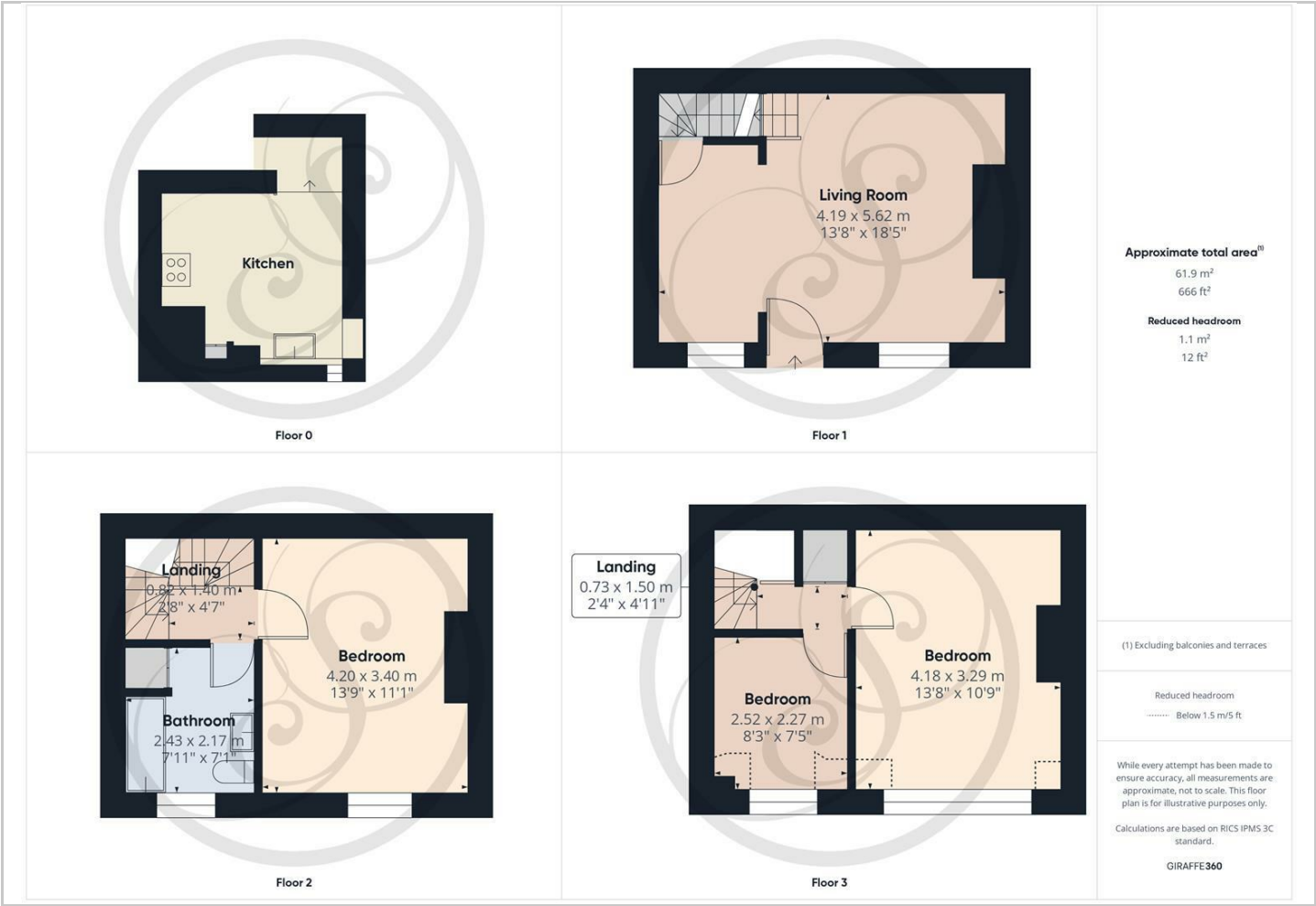
Hybrid Map



Terrain Map



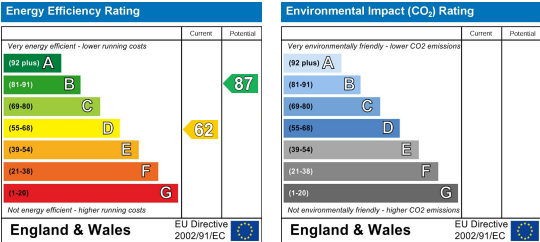
Floor Plan



Viewing

Please contact our Chapel Allerton Sales Office on 0113 237 0999 if you wish to arrange a viewing appointment for this property or require further information.

Energy Efficiency Graph



These particulars, whilst believed to be accurate are set out as a general outline only for guidance and do not constitute any part of an offer or contract. Intending purchasers should not rely on them as statements of representation of fact, but must satisfy themselves by inspection or otherwise as to their accuracy. No person in this firms employment has the authority to make or give any representation or warranty in respect of the property.