



Stoneacre
Properties



Pennyfield Close, Leeds, LS6 4NZ
£900 Per Calendar Month

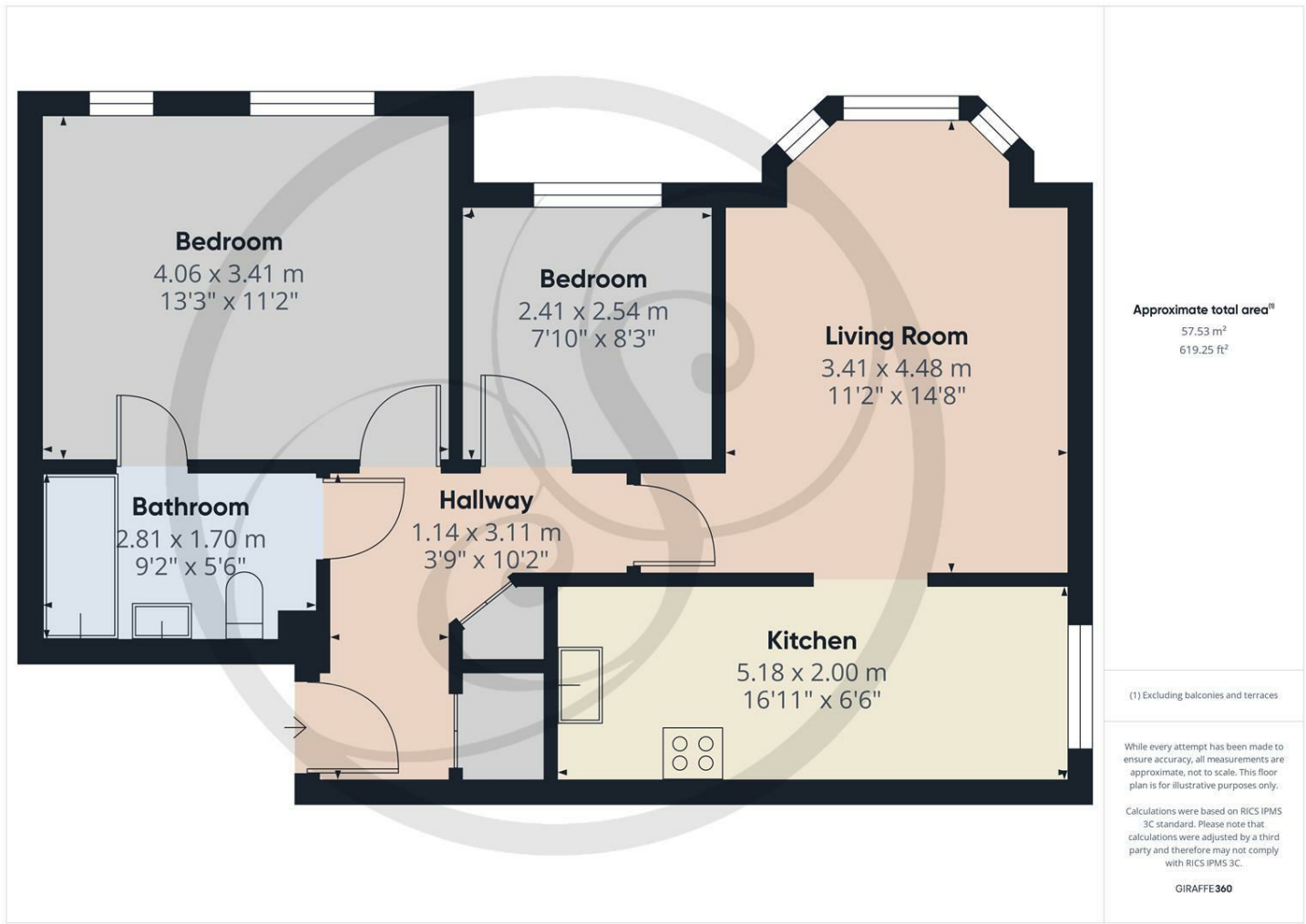
Stoneacre Properties are delighted to present this modern flat to rent on Pennyfield Close in Leeds. This property features two well-proportioned bedrooms, making it an ideal choice for couples, small families, or individuals seeking a comfortable living space.

The property briefly comprises of Entrance Hallway leading to the two bedrooms, bathroom, open plan living Room and kitchen with plenty of storage throughout. The flat is filled with natural light, creating a warm and inviting atmosphere.

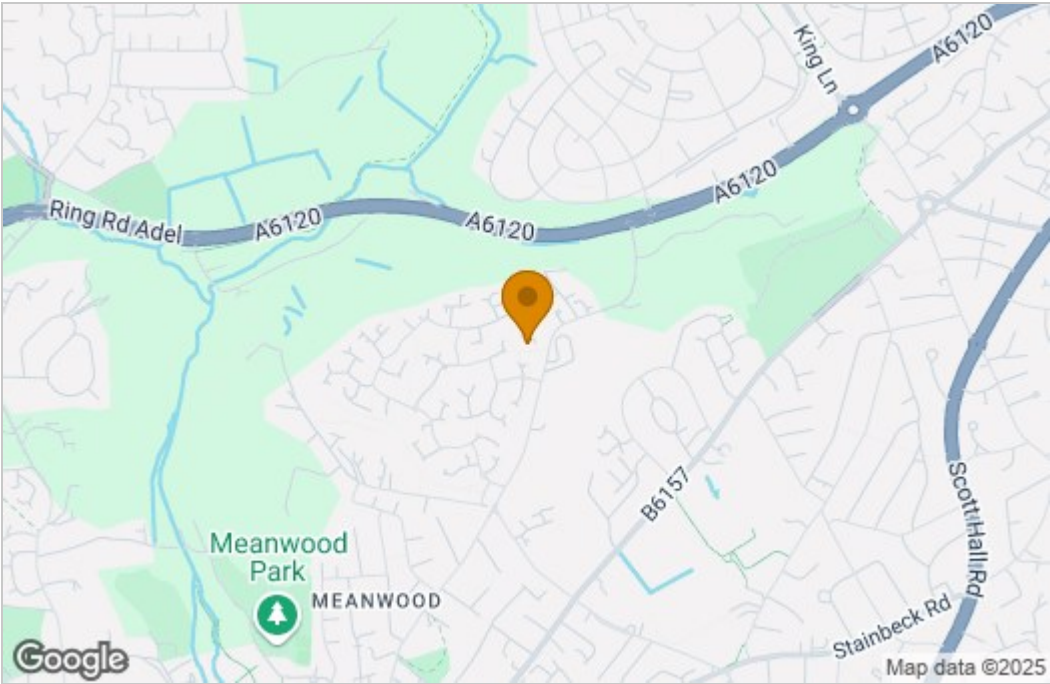
Situated in a quiet location, this property benefits from convenient access to local amenities, including shops, parks, and public transport links..

Do not miss the chance to make this flat your own! AVAILABLE NOW!

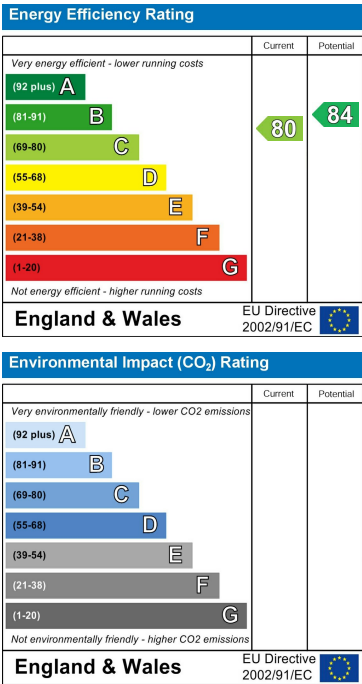
Floor Plan



Area Map



Energy Efficiency Graph



These particulars, whilst believed to be accurate are set out as a general outline only for guidance and do not constitute any part of an offer or contract. Intending purchasers should not rely on them as statements of representation of fact, but must satisfy themselves by inspection or otherwise as to their accuracy. No person in this firm's employment has the authority to make or give any representation or warranty in respect of the property.

