



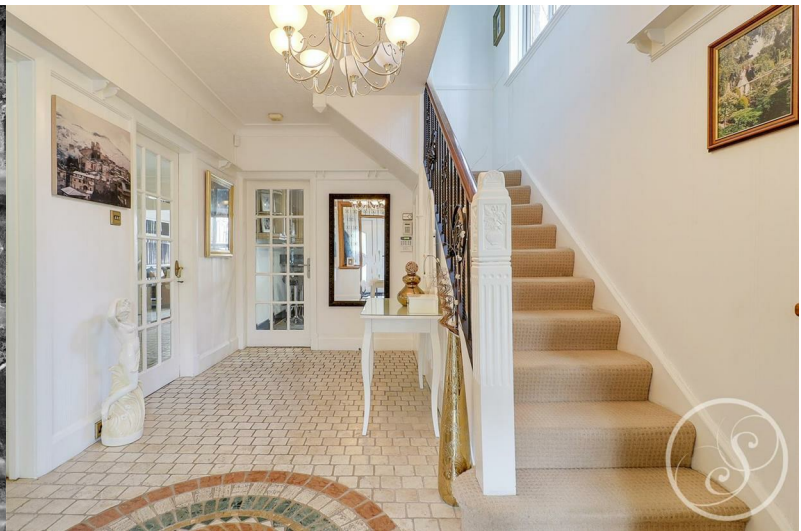
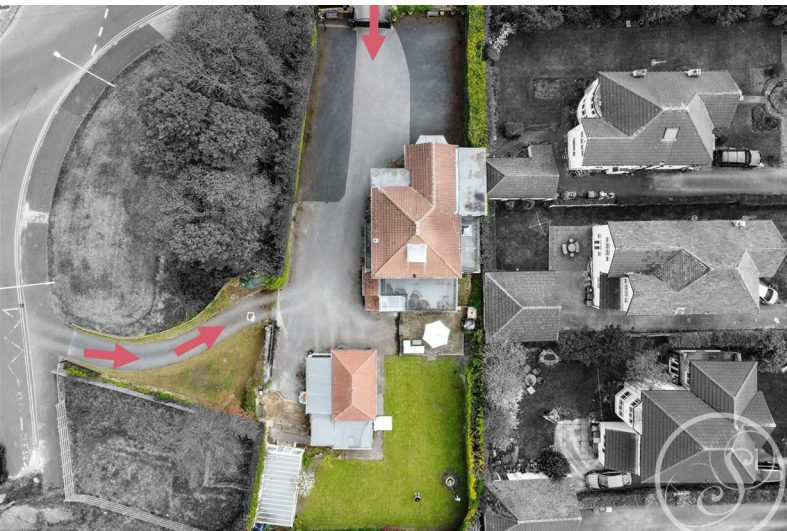
Stoneacre
Properties



Harrogate Road

Leeds, LS17 7DY

Offers Over £1,200,000



Harrogate Road

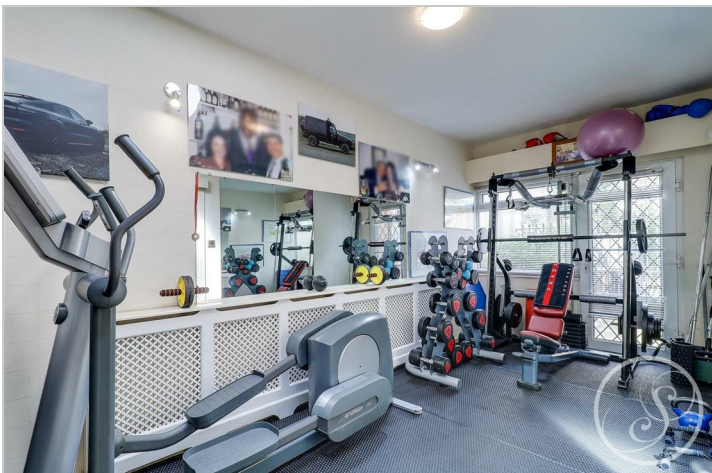
Leeds, LS17 7DY

Offers Over £1,200,000



Internally, the main house boasts over 2200 sqft of living accommodation and comprises large open plan Lounge/Dining Room, Kitchen complete with granite worktops and backsplash that opens up to the family room, grand Entrance Hallway, Utility Room, downstairs w/c and Gym to the ground floor. To the first floor there are four bedrooms, the master complete with walk-in dressing room that leads through to en-suite bathroom, and house bathroom. Bedrooms 1, 2, and 3 are large doubles with fitted wardrobes.

This rare property is bound to be popular so to arrange a viewing please contact Stoneacre Properties. Proceedable buyers only.



Road Map



Hybrid Map



Terrain Map



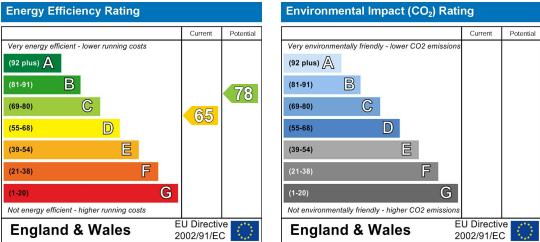
Floor Plan



Viewing

Please contact our Chapel Allerton Sales Office on 0113 237 0999 if you wish to arrange a viewing appointment for this property or require further information.

Energy Efficiency Graph



These particulars, whilst believed to be accurate are set out as a general outline only for guidance and do not constitute any part of an offer or contract. Intending purchasers should not rely on them as statements of representation of fact, but must satisfy themselves by inspection or otherwise as to their accuracy. No person in this firm's employment has the authority to make or give any representation or warranty in respect of the property.