



Stoneacre
Properties



Sandringham Drive

Leeds, LS17 8DB

£135,000



Sandringham Drive

Leeds, LS17 8DB

£135,000



Entrance

Stepping into the private entrance, there is a hallway with stairs leading up to the landing.

Kitchen

Modern fitted kitchen comprising wall and base units with electric hob and built in oven.

Bathroom

3-piece bathroom comprising toilet, sink and shower over bath complete with built in airing cupboard.

Bedroom One

Good sized double bedroom with built in storage laid to carpet.

Bedroom Two

Double bedroom with built in storage cupboard laid to carpet.

Lounge

Spacious lounge laid to carpet which offers access to the second reception room.

Second Reception Room

Accessed from either the hallway or lounge, this useful second reception room is perfect for dining area, play room or home office.

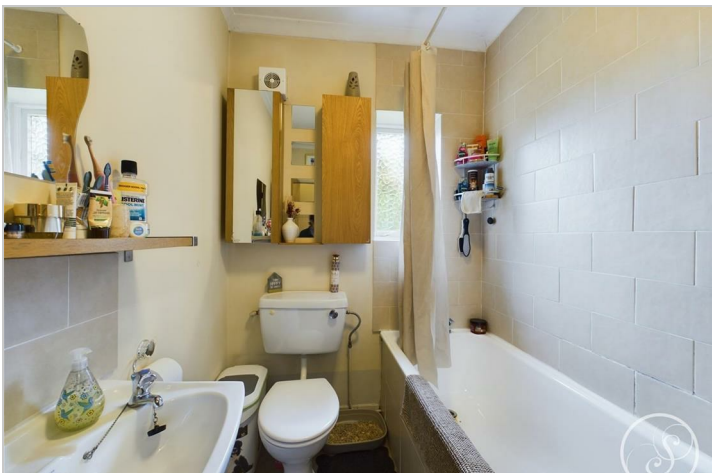
External

Property benefits from communal grounds to the front and rear of the building and on street parking.

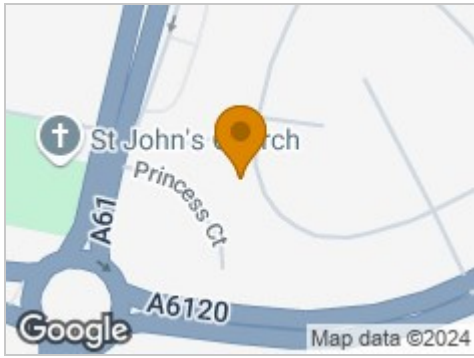
Lease

We are advised by the vendor that the property is leasehold with 78 years remaining. We are also advised that the current service charge is approximately £500 per annum and the ground rent

is approximately £10 per annum. A buyer is advised to obtain verification from their solicitor or legal advisor.



Road Map



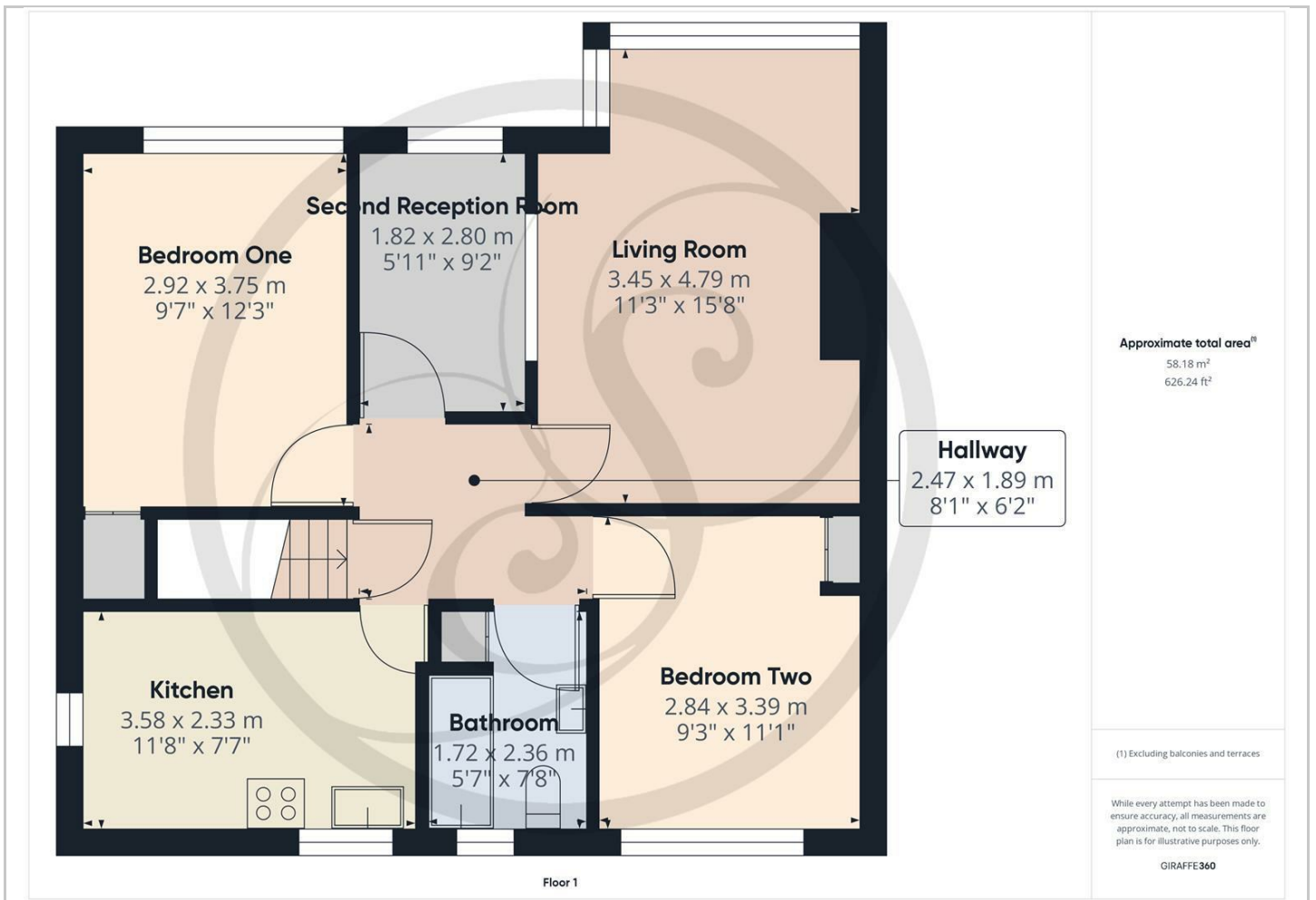
Hybrid Map



Terrain Map



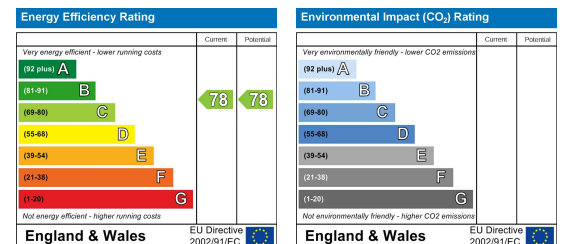
Floor Plan



Viewing

Please contact our Chapel Allerton Sales Office on 0113 237 0999 if you wish to arrange a viewing appointment for this property or require further information.

Energy Efficiency Graph



These particulars, whilst believed to be accurate are set out as a general outline only for guidance and do not constitute any part of an offer or contract. Intending purchasers should not rely on them as statements of representation of fact, but must satisfy themselves by inspection or otherwise as to their accuracy. No person in this firm's employment has the authority to make or give any representation or warranty in respect of the property.