



Stoneacre
Properties



Primley Park Green

Alwoodley Leeds, LS17 7LD

£150,000



Primley Park Green

Alwoodley Leeds, LS17 7LD

£150,000



Entrance

The building is accessed via intercom entry / key. Stairs lead up to the first floor. Upon entering the apartment you are welcomed into the entrance hallway which offers access throughout the apartment.

Lounge/Diner

Large open plan space with dual aspect windows. A wonderful place for hosting.

Kitchen

In need of modernisation but currently comprising wall and base units and sink with drainer with space for oven/hob.

Bedroom 1

Spacious double bedroom.

Bedroom 2

Second bedroom with fitted storage. Ideal as a guest room or home office.

Bathroom

Wet room with shower, toilet and sink.

Garage / Parking

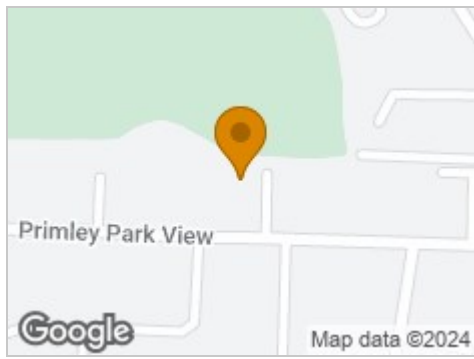
Apartment comes with its own garage and parking space

Lease

We are advised the property is leasehold with a term of 999 years from 1965. The current service charge is approximately £225 per annum and the ground rent is £10 per annum. A buyer is advised to obtain verification from their solicitor or legal advisor.



Road Map



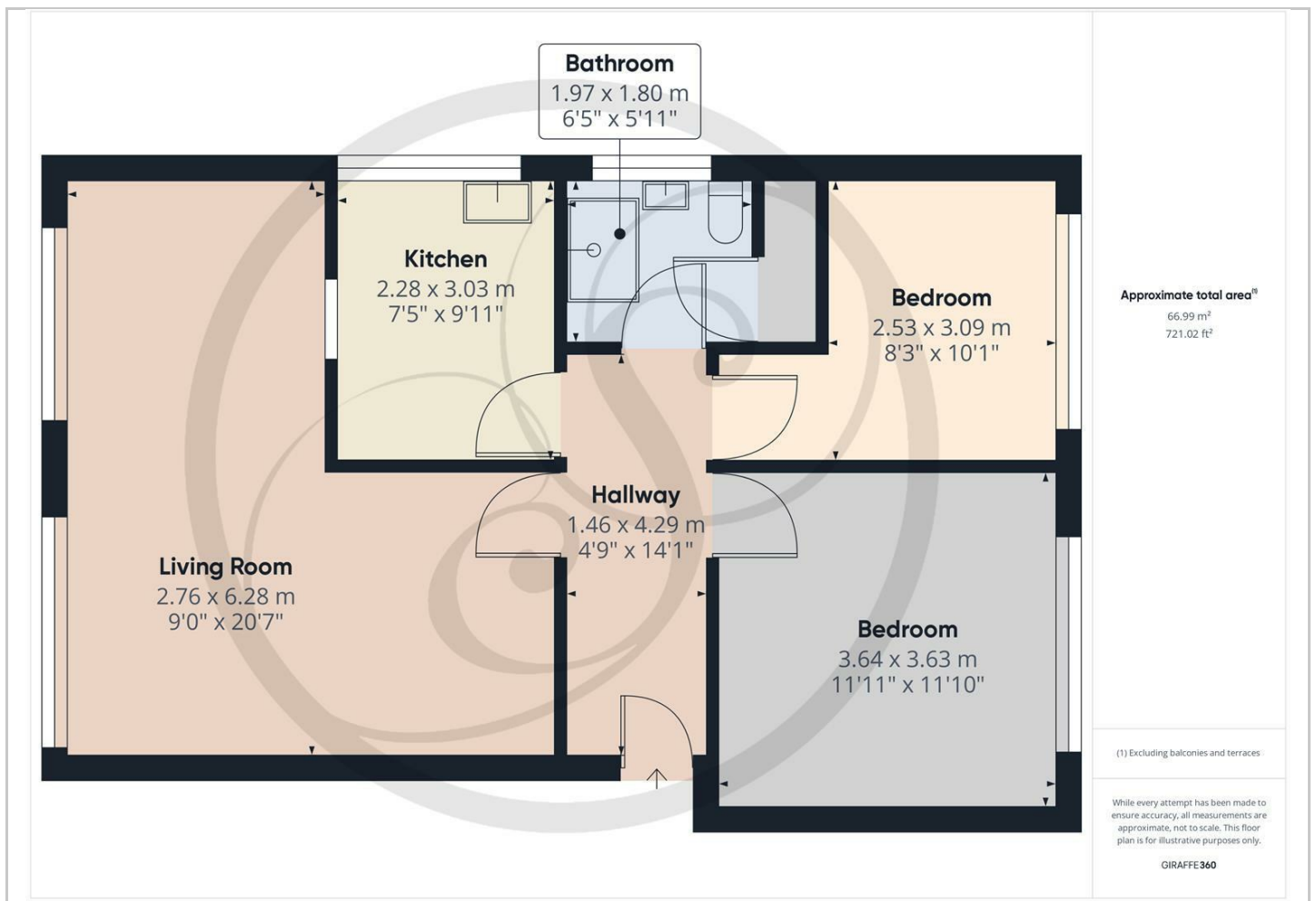
Hybrid Map



Terrain Map



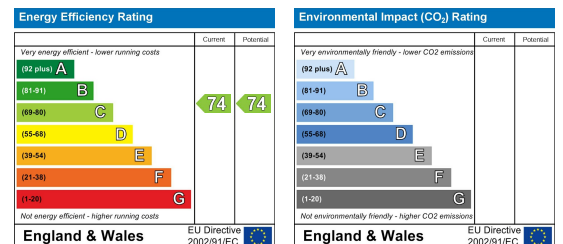
Floor Plan



Viewing

Please contact our Chapel Allerton Sales Office on 0113 237 0999 if you wish to arrange a viewing appointment for this property or require further information.

Energy Efficiency Graph



These particulars, whilst believed to be accurate are set out as a general outline only for guidance and do not constitute any part of an offer or contract. Intending purchasers should not rely on them as statements of representation of fact, but must satisfy themselves by inspection or otherwise as to their accuracy. No person in this firm's employment has the authority to make or give any representation or warranty in respect of the property.