



Stoneacre
Properties



Eden Court

Leeds, LS4 2BF

£259,950



Eden Court

Leeds, LS4 2BF

£259,950



Entrance

Entering the property you are welcomed into the entrance hallway which leads to the kitchen/diner.

Kitchen/Diner

Offering a formal dining area, the kitchen is made up of grey gloss wall and base units and comprises integrated oven, hob, dishwasher and fridge/freezer as well as plumbing for washing machine.

w/c

Comprising toilet and sink.

Storage

Useful understairs storage located between the kitchen and lounge.

Lounge

Formal lounge with French doors out to the rear garden.

Bedroom 1

Double bedroom with en-suite bathroom.

En-suite

Comprising shower, toilet and sink.

Bedroom 2

Double bedroom with en-suite.

En-suite 2

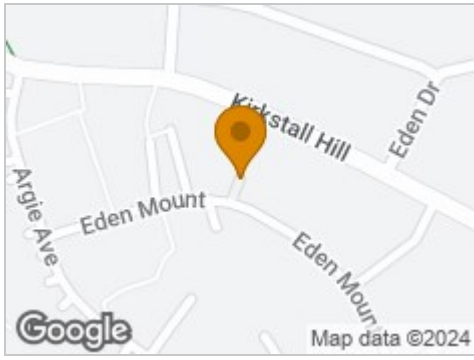
Comprising shower over bath, toilet and sink.

External

The property boasts an allocated parking space, as well as useful visitor parking. To the rear is an enclosed garden laid to lawn with patio area and shed.



Road Map



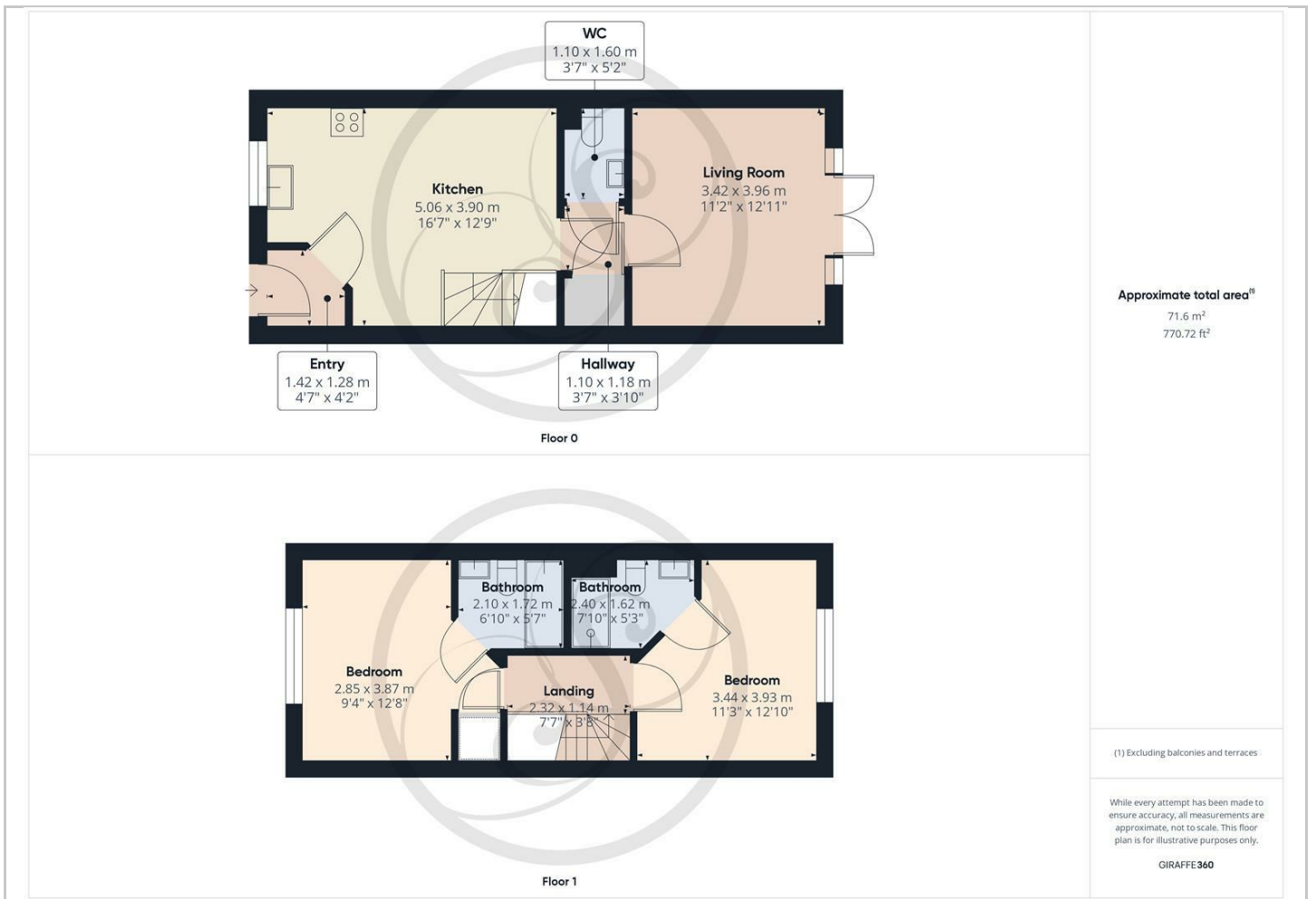
Hybrid Map



Terrain Map



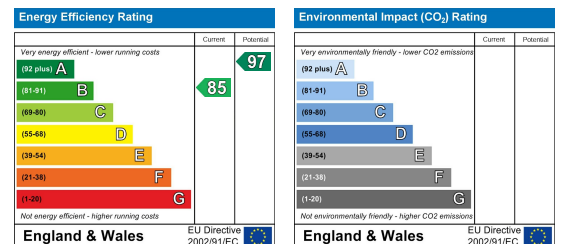
Floor Plan



Viewing

Please contact our Chapel Allerton Sales Office on 0113 237 0999 if you wish to arrange a viewing appointment for this property or require further information.

Energy Efficiency Graph



These particulars, whilst believed to be accurate are set out as a general outline only for guidance and do not constitute any part of an offer or contract. Intending purchasers should not rely on them as statements of representation of fact, but must satisfy themselves by inspection or otherwise as to their accuracy. No person in this firm's employment has the authority to make or give any representation or warranty in respect of the property.

184 Harrogate Road, Leeds, West Yorkshire, LS7 4NZ

Tel: 0113 237 0999 Email: north@stoneacreproperties.co.uk <https://www.stoneacreproperties.co.uk>