



Stoneacre
Properties



Wensley Drive

Leeds, LS7 3QW

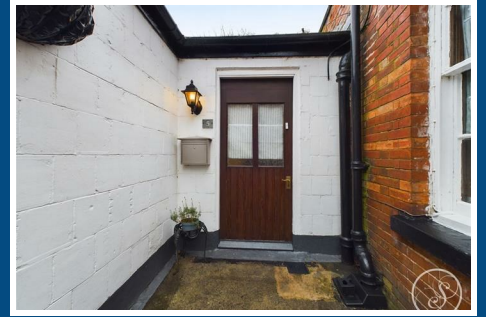
£140,000



Wensley Drive

Leeds, LS7 3QW

£140,000



Entrance

Entering the property you are welcomed into the entrance hallway which offers access throughout the apartment.

Lounge

Lounge is finished with wood flooring and dual aspect windows.

Bedroom

Double bedroom laid to carpet.

Kitchen

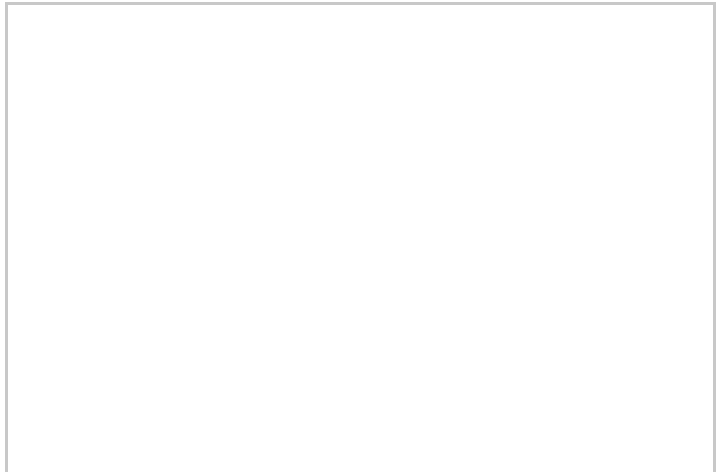
Galley style kitchen made up of wall and base units with integrated gas hob with extractor above, oven, sink with drainer, and plumbing for washing machine, and space for fridge/freezer.

Bathroom

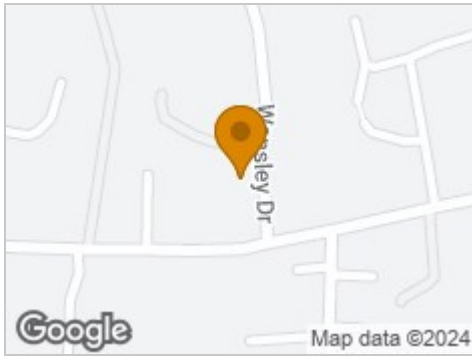
Tiled bathroom with shower, toilet and sink.

Lease

We are advised by the vendor that the property is leasehold with a term of approximately 84 years remaining but the owner will also acquire the freehold of the property. The current service charge is approximately £150 per month and ground rent is approximately £25 per annum. A buyer is advised to obtain verification from their solicitor or legal advisor.



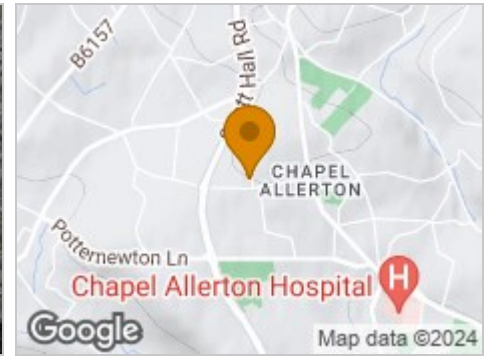
Road Map



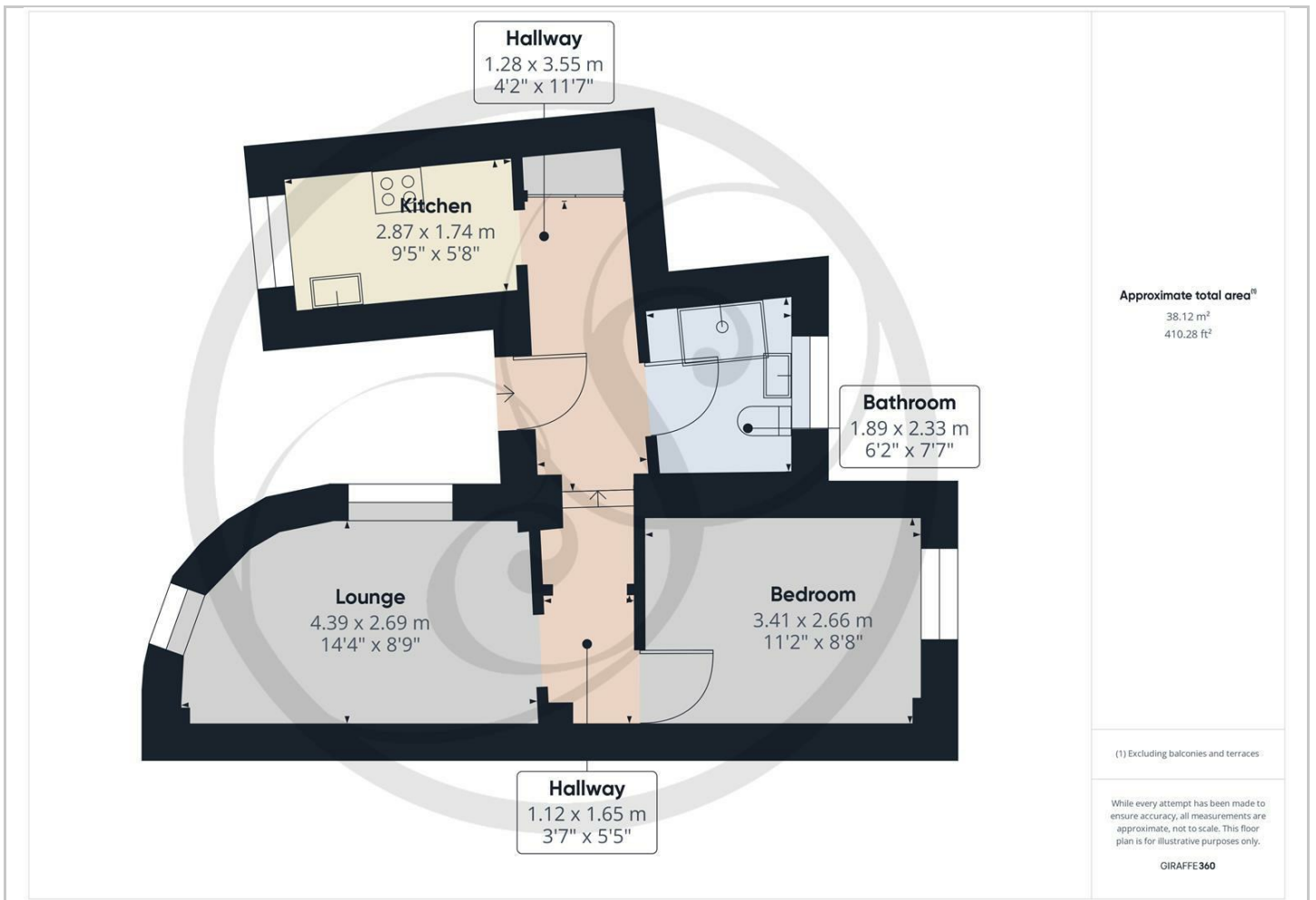
Hybrid Map



Terrain Map



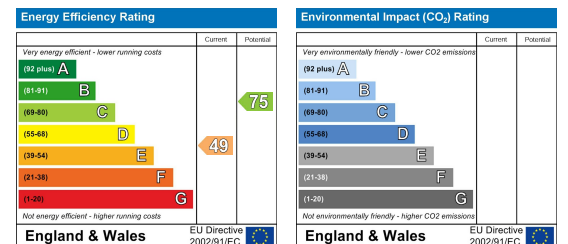
Floor Plan



Viewing

Please contact our Chapel Allerton Sales Office on 0113 237 0999 if you wish to arrange a viewing appointment for this property or require further information.

Energy Efficiency Graph



These particulars, whilst believed to be accurate are set out as a general outline only for guidance and do not constitute any part of an offer or contract. Intending purchasers should not rely on them as statements of representation of fact, but must satisfy themselves by inspection or otherwise as to their accuracy. No person in this firm's employment has the authority to make or give any representation or warranty in respect of the property.