



Stoneacre  
Properties



## Stainbeck Road

Leeds, LS7 2LR

£220,000





# Stainbeck Road

Leeds, LS7 2LR

£220,000



## Entrance

Entering the property you are welcomed into the entrance hallway which offers access throughout the ground floor.

## Lounge/Diner

Through lounge/diner is a large spacious living space with ample space for a formal seating area, and a formal dining area.

## Kitchen

Made up of wall and base units with gas hob, double oven, sink with drainer, plumbing for washing machine. Side door to driveway and rear garden.

## Bedroom 1

Large spacious double bedroom with fitted wardrobes.

## Bedroom 2

Second double bedroom.

## Bedroom 3

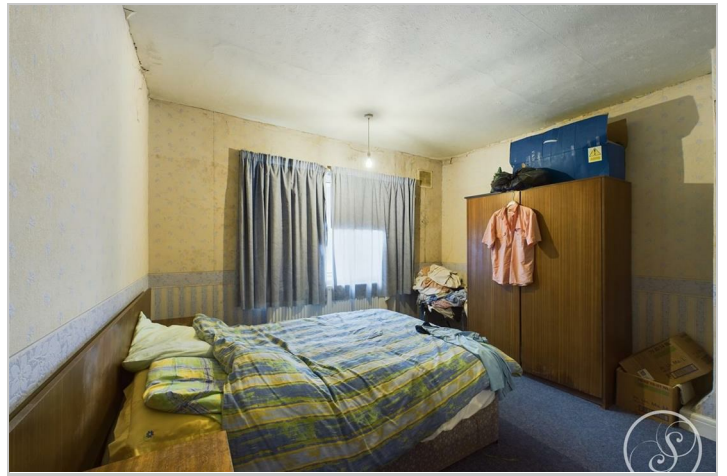
Third bedroom.

## Bathroom

Comprising shower over bath, toilet and sink.

## External

Externally, the property boasts a large front driveway that runs down the side of the property to the garage, to the front is a garden laid to lawn. To the rear is a spacious garden.



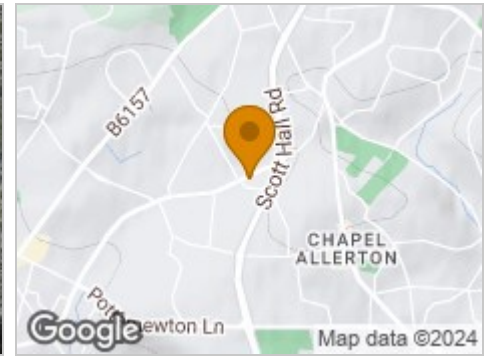
## Road Map



## Hybrid Map



## Terrain Map



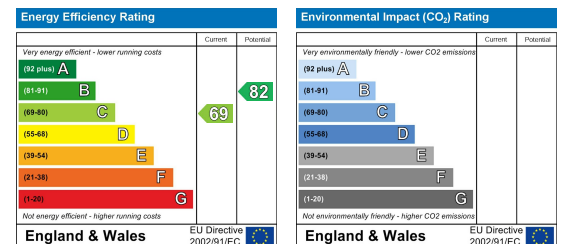
## Floor Plan



## Viewing

Please contact our Chapel Allerton Sales Office on 0113 237 0999 if you wish to arrange a viewing appointment for this property or require further information.

## Energy Efficiency Graph



These particulars, whilst believed to be accurate are set out as a general outline only for guidance and do not constitute any part of an offer or contract. Intending purchasers should not rely on them as statements of representation of fact, but must satisfy themselves by inspection or otherwise as to their accuracy. No person in this firm's employment has the authority to make or give any representation or warranty in respect of the property.