



Stoneacre
Properties



Elmwood Lane

Leeds, LS2 8WF

£159,950



Elmwood Lane

Leeds, LS2 8WF

£159,950



Entrance

The site is accessed via pin code / key fob, and the main block is accessed via intercom entry system / fob. The apartment is situated on the ground floor. Upon entering the property you are welcomed into the hallway which offers access to the storage cupboard and throughout the remainder of the apartment.

Bedroom 1

Large double bedroom with ample space for wardrobes also boasts en-suite bathroom.

En-suite

Comprising shower, toilet and sink.

Bedroom 2

Second spacious double bedroom.

Bathroom

Main bathroom comprising shower over bath, toilet and sink.

External

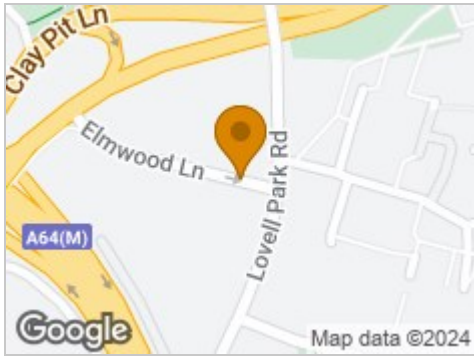
Externally, the property offers use of the secure and well maintained communal grounds.

Lease

We are advised by the vendor that the property is leasehold with a term of 999 years commencing 2003. The current service charge is approximately £315 per quarter and the ground rent is £295 per annum. A buyer is advised to obtain verification from their solicitor or legal advisor.



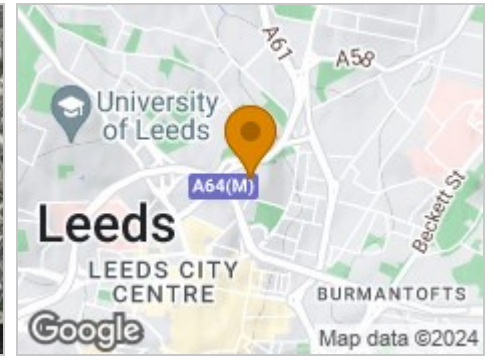
Road Map



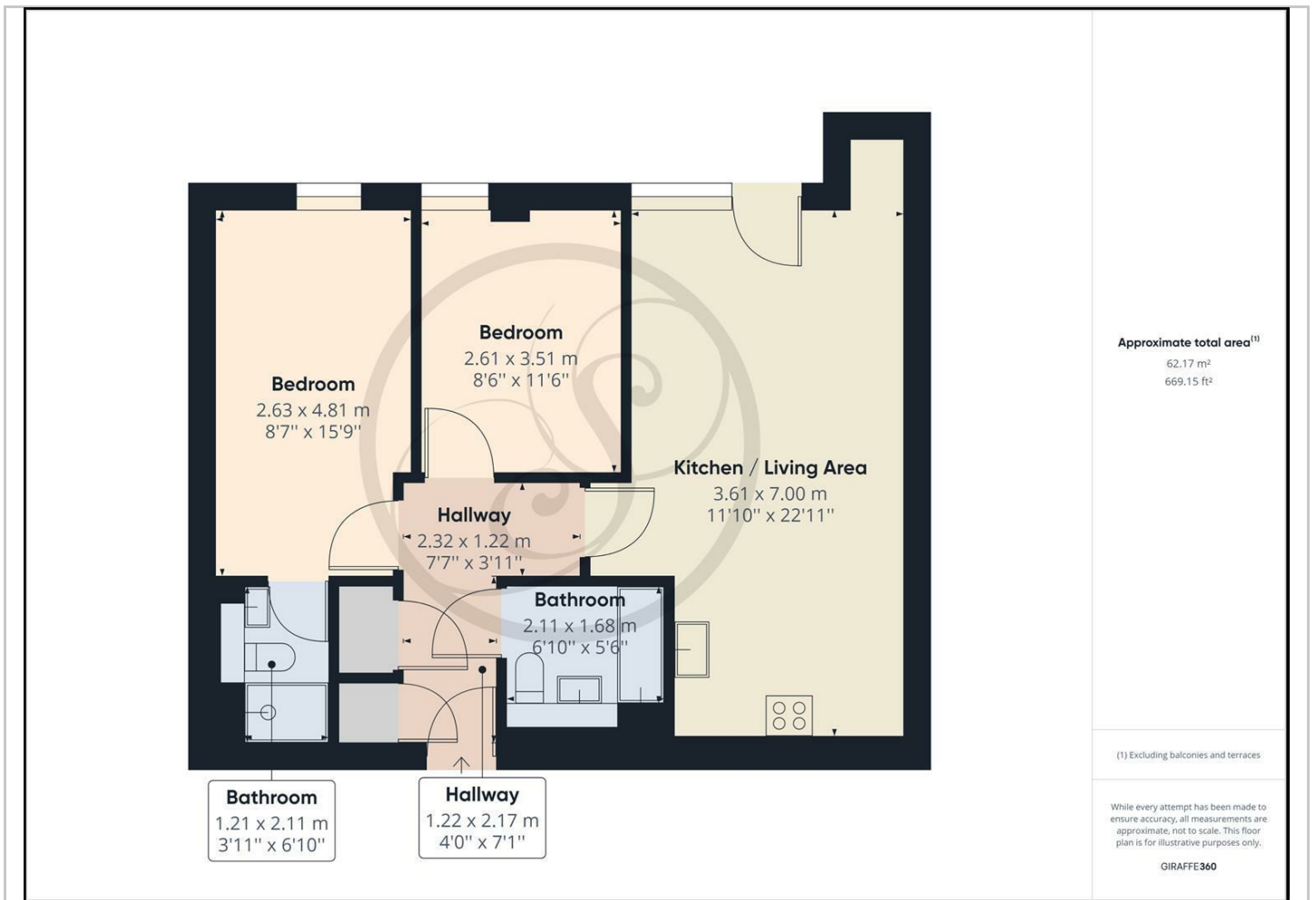
Hybrid Map



Terrain Map



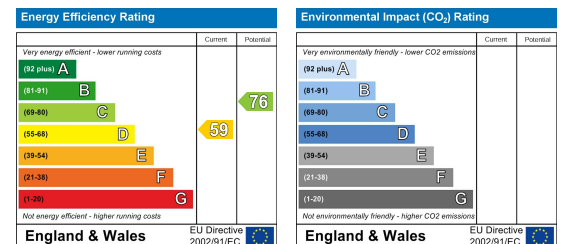
Floor Plan



Viewing

Please contact our Chapel Allerton Sales Office on 0113 237 0999 if you wish to arrange a viewing appointment for this property or require further information.

Energy Efficiency Graph



These particulars, whilst believed to be accurate are set out as a general outline only for guidance and do not constitute any part of an offer or contract. Intending purchasers should not rely on them as statements of representation of fact, but must satisfy themselves by inspection or otherwise as to their accuracy. No person in this firm's employment has the authority to make or give any representation or warranty in respect of the property.