



Stoneacre
Properties



Cherry Court

Headingley Leeds, LS6 2WB

Offers In The Region Of £190,000



Cherry Court

Headingley Leeds, LS6 2WB

Offers In The Region Of £190,000



Entrance

Entering the property you are welcomed into the entrance hallway which offers access throughout the apartment.

Lounge

Spacious formal lounge diner, offers ample space for seating, a dining area and Juliet balcony.

Kitchen

Kitchen made up of wall and base units comprising integrated oven, gas hob with extractor above, sink with drainer, integrated washing machine, breakfast bar seating and ample storage space.

Bedroom 1

Large primary bedroom laid to carpet with fitted storage and en-suite bathroom.

En-suite

Comprising shower, toilet and sink.

Bedroom 2

Second double bedroom laid to carpet.

Bathroom

Part tiled bathroom comprising shower over bath, toilet and sink.

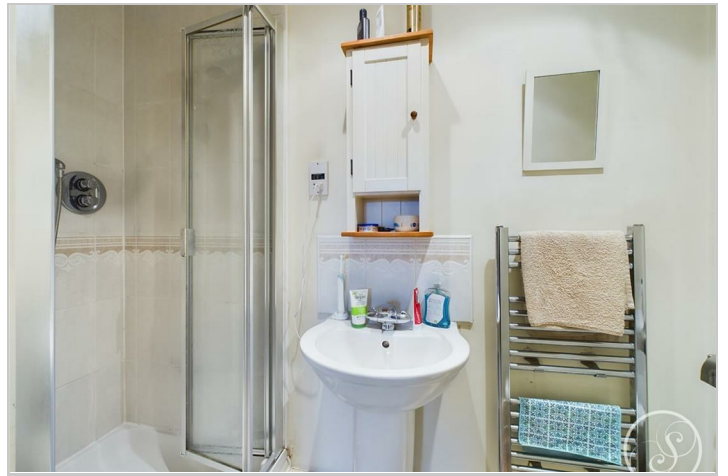
External

The property comes complete with garage with its own electric supply.

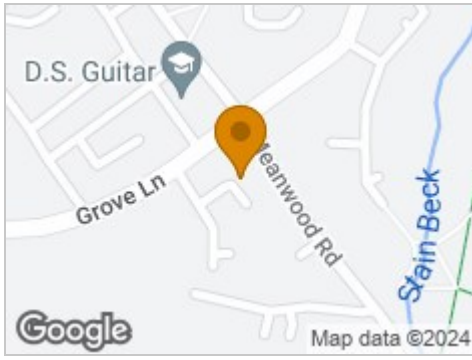
Lease

We are advised by the vendor that the property is leasehold with a term of approximately 976 years remaining. The current service charge is approximately £1200 per annum and ground rent is

approximately £150 per annum. A buyer is advised to obtain verification from their solicitor or legal advisor.



Road Map



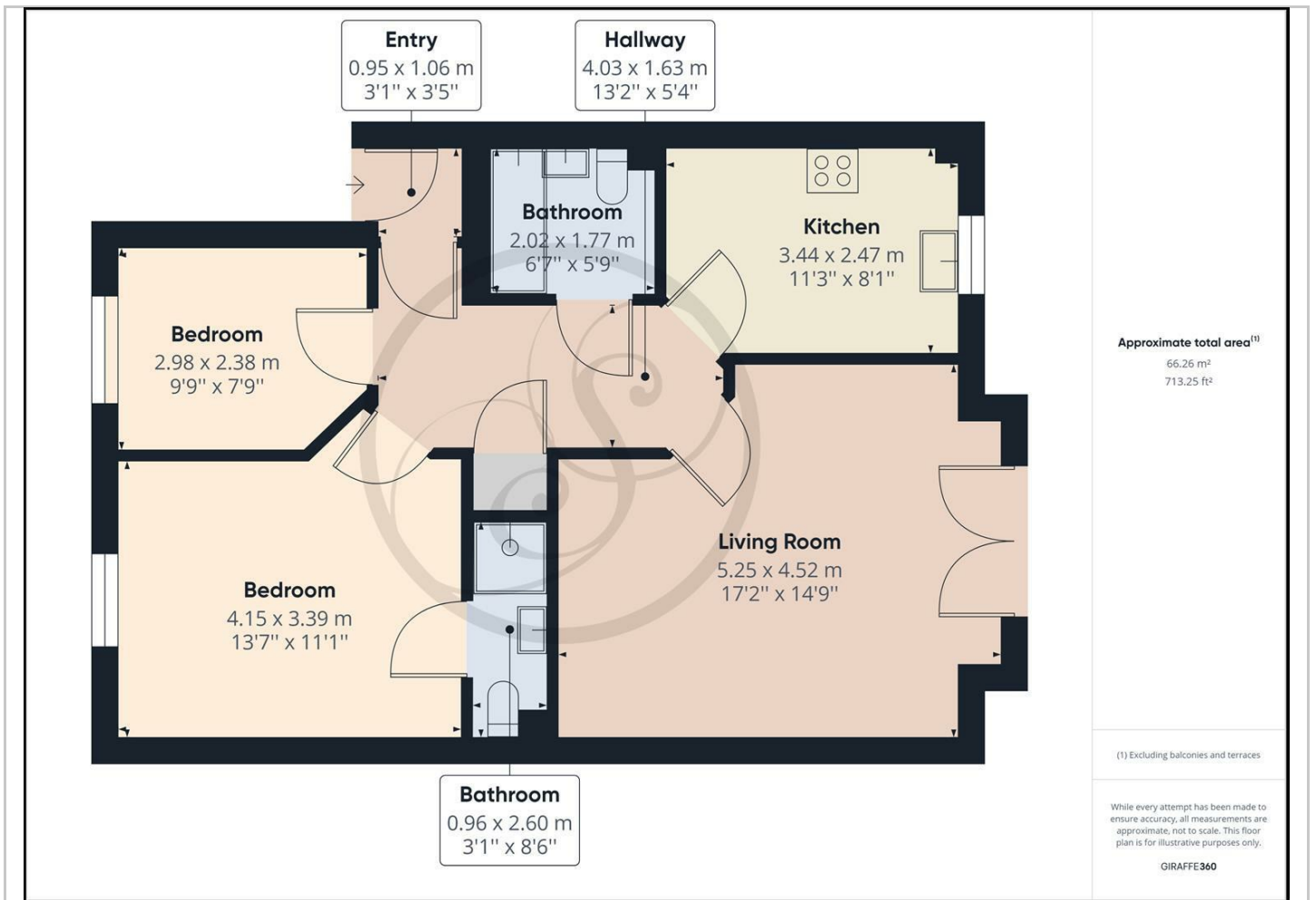
Hybrid Map



Terrain Map



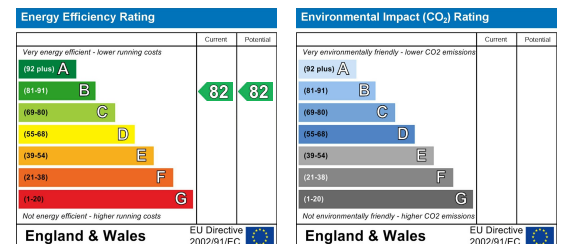
Floor Plan



Viewing

Please contact our Chapel Allerton Sales Office on 0113 237 0999 if you wish to arrange a viewing appointment for this property or require further information.

Energy Efficiency Graph



These particulars, whilst believed to be accurate are set out as a general outline only for guidance and do not constitute any part of an offer or contract. Intending purchasers should not rely on them as statements of representation of fact, but must satisfy themselves by inspection or otherwise as to their accuracy. No person in this firm's employment has the authority to make or give any representation or warranty in respect of the property.