



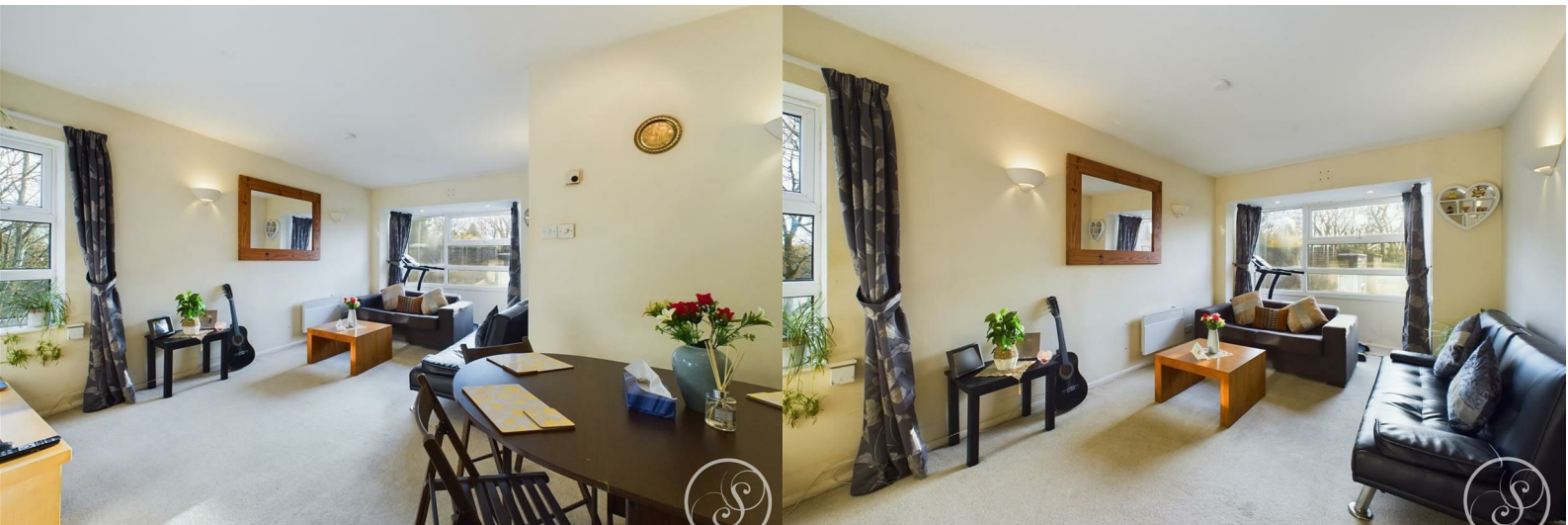
Stoneacre
Properties



Robinwood Court

Leeds, LS8 1DZ

£165,000



Robinwood Court

Leeds, LS8 1DZ

£165,000



Entrance

Intercom entry system offers access to the block and stairs lead up to the second floor. Entering the property you are welcomed into the entrance hallway offering access throughout the flat and to the storage cupboard.

Lounge/Diner

Open plan lounge/diner offers space for dining area and separate sitting area. Large windows overlook the central communal grounds.

Kitchen

Accessed off the kitchen/diner is the galley style kitchen made up of wall and base units and comprising integrated undermounted fridge/freezer, plumbing for washing machine, electric hob with extractor above, oven, sink with drainer and pantry cupboard.

Bedroom 1

Large double bedroom with fitted storage.

Bedroom 2

Double bedroom with fitted storage.

Bathroom

Shower over bath, toilet and sink.

External

Externally, the property boasts well maintained communal gardens and parking.

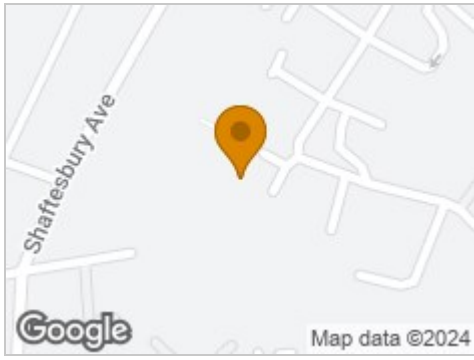
Lease

We are advised by the vendor that the property is leasehold with a term of 958 years remaining. The current service charge is approximately £1796.52

per annum and the ground rent is TBC. A buyer is advised to obtain verification from their solicitor or legal advisor.



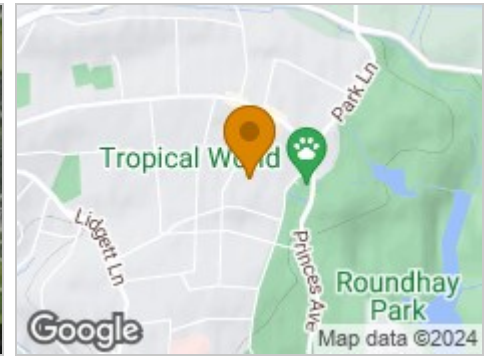
Road Map



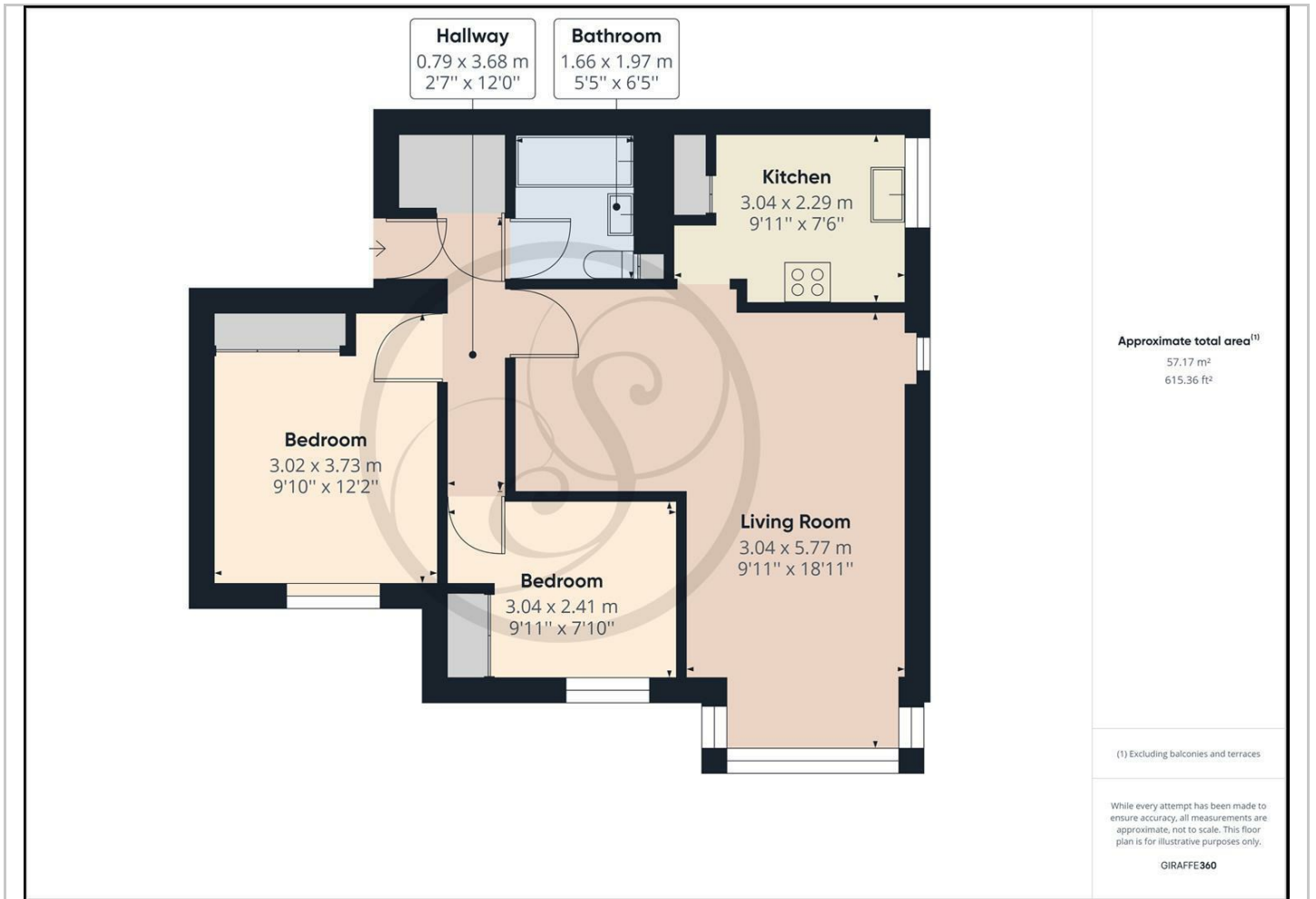
Hybrid Map



Terrain Map



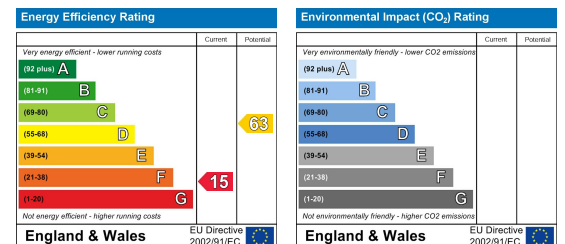
Floor Plan



Viewing

Please contact our Chapel Allerton Sales Office on 0113 237 0999 if you wish to arrange a viewing appointment for this property or require further information.

Energy Efficiency Graph



These particulars, whilst believed to be accurate are set out as a general outline only for guidance and do not constitute any part of an offer or contract. Intending purchasers should not rely on them as statements of representation of fact, but must satisfy themselves by inspection or otherwise as to their accuracy. No person in this firm's employment has the authority to make or give any representation or warranty in respect of the property.