



£389,995

Haddon Grove, Sidcup, Kent, DA15 8NA

Chattertons

EST 1893



## 3 bedroom house

Located towards the end of a lovely quiet cul de sac with easy access to the Oval shopping area at one end with the lovely open space of Holly Oak park at the other. The house is offered to the market chain free and has been priced to take into account that it needs complete renovation and updating. The accommodation includes 3 bedrooms and 2 receptions. The garden is small but the owners (who grew up in the house) never even considered this as they spent most of their childhood at the local park. Being in a prime spot in Bexley means that a multitude of great Bexley schools are all close at hand.



**Cul de sac location**  
**Easy access to The Oval**  
**Holly Oak Wood park at the end of the road**  
**3 bedrooms**  
**Small garden with new shed**

**Entrance Hall**

Under stairs storage cupboard, carpet

**Lounge 11' 2" x 9' 9" (3.40m x 2.97m)**

Double glazed bay window, gas fire

**Dining Room 15' 5" x 9' 8" (4.70m x 2.94m)**

Gas fire, carpet, modern double glazed sliding doors to the outside

**Kitchen 11' 7" x 4' 11" (3.53m x 1.50m)**

Double glazed window, double glazed door to the garden, wall and base units with work surface, cooker point, stainless steel single drainer sink unit with mixer taps, tiled walls

**Stairs to the first floor**

Carpet

**Rear access**  
**Chain free**  
**Needs updating**  
**Bexley schools**  
**Great first time buy**

**Bedroom 1 15' 8" x 8' 11" (4.77m x 2.72m)**

Double glazed bay window, carpet, built in wardrobes

**Bedroom 2 13' 0" x 9' 4" (3.96m x 2.84m)**

Double glazed window, carpet

**Bedroom 3 9' 0" x 5' 11" (2.74m x 1.80m)**

Double glazed window, carpet

**Bathroom**

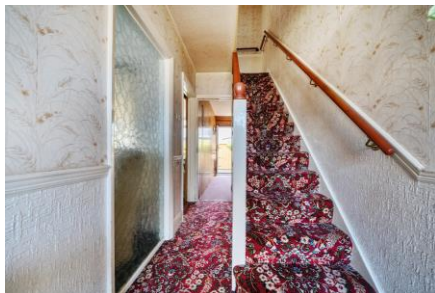
Frosted double glazed window, panelled bath, pedestal wash hand basin, wc, tiled walls, vinyl floor covering

**Rear Garden 18' 9" x 15' 4" (5.71m x 4.67m)**

Paved, timber built shed, outside tap, rear access



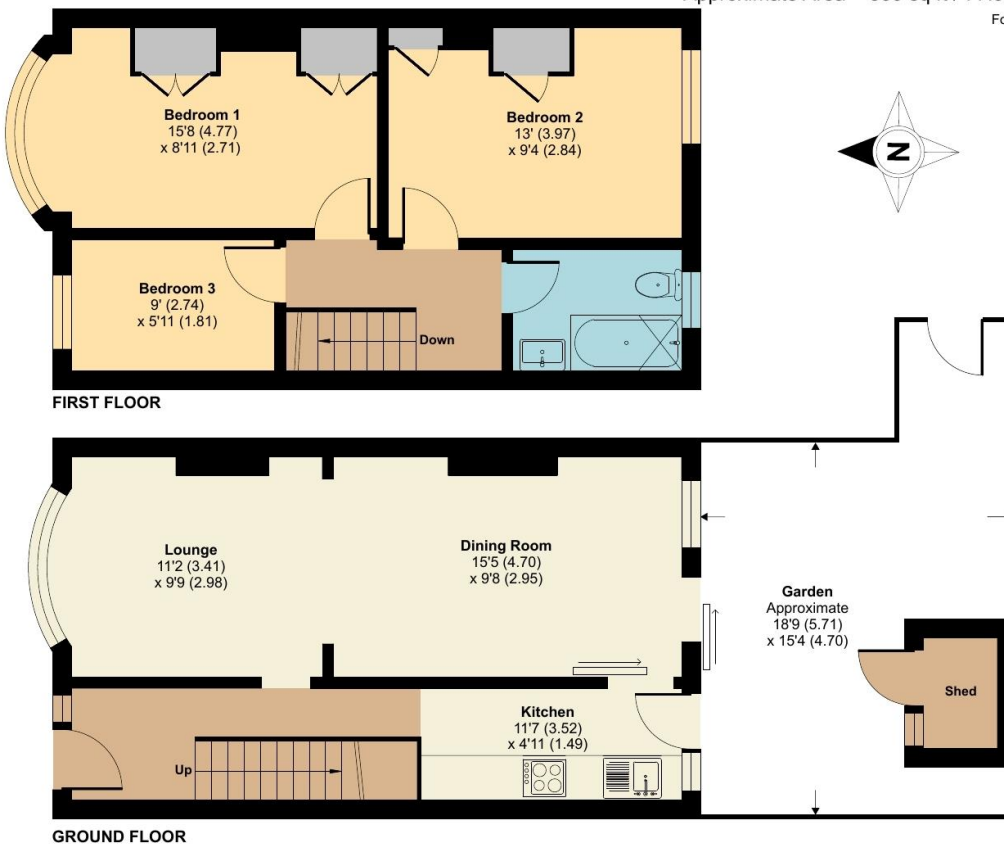




## Haddon Grove, Sidcup, DA15

Approximate Area = 839 sq ft / 77.9 sq m (excludes shed)

For identification only - Not to scale



Floor plan produced in accordance with RICS Property Measurement 2nd Edition, incorporating International Property Measurement Standards (IPMS2 Residential). © nichecom 2025. Produced for Chattertons Estate Agents Ltd. REF: 1276631

All dimensions are approximate and are quoted for guidance only, their accuracy cannot be confirmed. Reference to appliances and/or services does not imply they are necessarily in working order or fit for the purpose. Buyers are advised to obtain verification from their solicitors as to the freehold/leasehold status of the property, the position regarding any fixtures and fittings and where the property has been extended / converted as to Planning approval and Building Regulation compliance. These particulars do not constitute or form part of an offer or contract, nor may they be regarded as representations. All interested parties must themselves verify their accuracy. Where a room layout is included this is for general guidance only, it is not to scale and its accuracy cannot be confirmed. Ref Code:

**020 8859 4000**

405 Footscray Road  
New Eltham SE9 3UL

sales.neweltham@chattertons.org.uk

# Chattertons

EST 1893