



£499,995

Days Lane, Sidcup, DA15 8JL

Chattertons

EST 1893



# Beautiful Period House

Located in a great little neighbourhood between New Eltham and Sidcup is this picture perfect period house with bare brick exterior. The current owners have fully refurbished the property whilst carefully appreciating the fantastic era in which the house was built. With lovely high ceilings the property has a fantastic feeling of space and the accommodation includes 2 very large receptions, extended kitchen diner with a high end finish and a large first floor stunning bathroom with free standing bath and separate shower along with 2 double bedrooms. The finish is excellent with a sprinkling of fireplaces. The property has fantastic potential for extension into the loft and whilst this would be subject to planning many house have done this already.



Picture perfect period house  
Very spacious  
2 double bedrooms  
2 large receptions  
Extended kitchen diner

Entrance Hall  
Tiled floor, column radiator

Lounge 12' 6" x 11' 2" (3.81m x 3.40m)  
Double glazed window with shutters, column radiator, stripped flooring

Dining Room 12' 6" x 11' 2" (3.81m x 3.40m)  
Stripped flooring, column radiator

Kitchen Dining 17' 5" x 13' 9" (5.30m x 4.19m)  
Skylight window, double glazed doors to garden, wall and base units with quartz work surface, enamel single drainer sink unit with mixer taps, integrated oven, separate warming shelf, induction hob with extractor hood, column radiator, tiled floor

Modern upstairs bathroom  
Great neighbourhood  
Bare brick exterior  
Classy finish  
Garden with rear access

Stairs to the first floor  
Carpet, access to loft

Bathroom  
2 double glazed windows with shutters, free standing bath, separate walk in shower cubicle, wc, wash hand basin, tiled walls and floor, spotlights

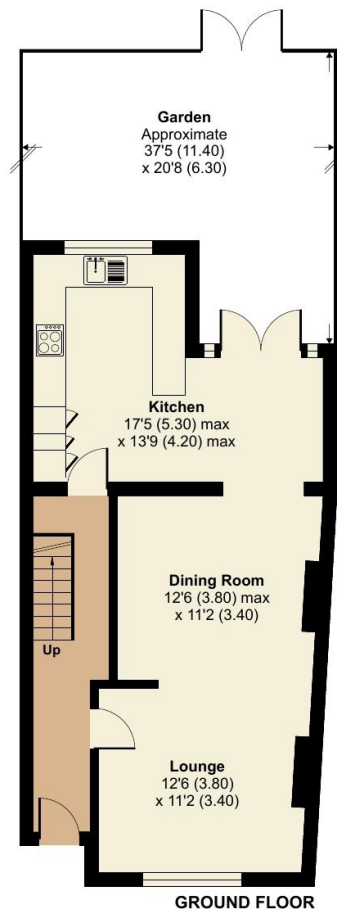
Split Landing  
Carpet

Bedroom 1 17' 1" x 11' 6" (5.20m x 3.50m)  
2 double glazed windows with shutters, column radiator, 2 wardrobes, carpet

Bedroom 2 12' 6" x 10' 10" (3.81m x 3.30m)  
Double glazed window with shutters, 2 built in cabinets, column radiator, carpet

Rear Garden 37' 5" x 20' 8" (11.40m x 6.29m)  
Patio area and artificial grass, timber shed





GROUND FLOOR



FIRST FLOOR

## Days Lane, Sidcup, DA15

Approximate Area = 1063 sq ft / 98.7 sq m

For identification only - Not to scale



Floor plan produced in accordance with RICS Property Measurement 2nd Edition, Incorporating International Property Measurement Standards (IPMS2 Residential). © nichecom 2025. Produced for Chattertons Estate Agents Ltd. REF: 1253471

All dimensions are approximate and are quoted for guidance only, their accuracy cannot be confirmed. Reference to appliances and/or services does not imply they are necessarily in working order or fit for the purpose. Buyers are advised to obtain verification from their solicitors as to the freehold/leasehold status of the property, the position regarding any fixtures and fittings and where the property has been extended / converted as to Planning approval and Building Regulation compliance. These particulars do not constitute or form part of an offer or contract, nor may they be regarded as representations. All interested parties must themselves verify their accuracy. Where a room layout is included this is for general guidance only, it is not to scale and its accuracy cannot be confirmed. Ref Code:

**020 8859 4000**

405 Footscray Road  
New Eltham SE9 3UL

[sales.neweltham@chattertons.org.uk](mailto:sales.neweltham@chattertons.org.uk)

# Chattertons

EST 1893