



COMYN ROAD, SW11 1QB

Asking Price £850,000

Discover this stunning and recently renovated Victorian conversion, meticulously maintained to a high standard. This property features a large reception room, a kitchen/dining room with direct access to a private south-facing garden, a contemporary bathroom, three bedrooms, and great cellar storage. Upon entry, you'll find a spacious and inviting hallway, to the left, the front reception room with high ceilings, a bay window with shutters, and original wooden flooring. Adjacent to the reception room is a double bedroom with access to a private courtyard (there is Planning Permission to add an en-suite shower room in this area). The fully modernised kitchen at the back of the property includes integrated appliances and ample space for dining table and chairs. Bi-folding doors open to the private south-facing garden, ideal for entertaining. The first floor hosts two additional bedrooms. Comyn Road, SW11 1QB is perfectly located for easy access to the popular amenities on Northcote Road, Battersea Rise, and St. John's Road. The lush green spaces of Wandsworth and Clapham Commons are nearby, and Clapham Junction Station is just a short walk away. No onward chain. Share of Freehold. EPC rating: C. Council Tax band: D.

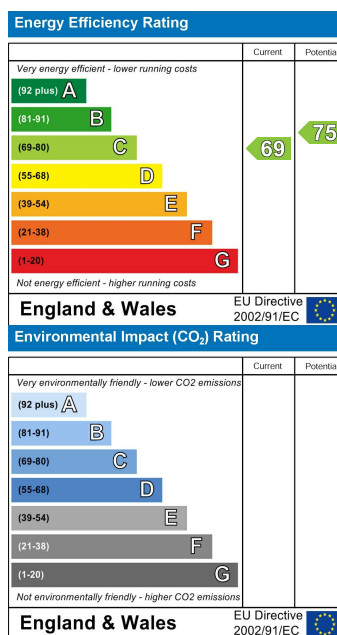
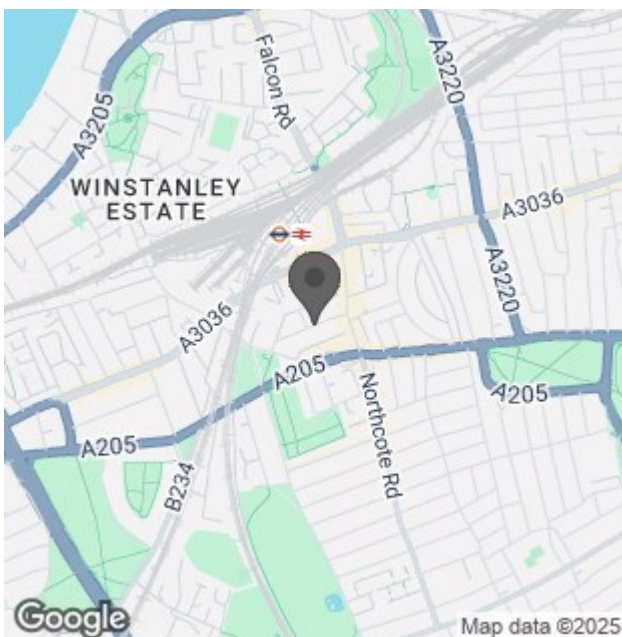
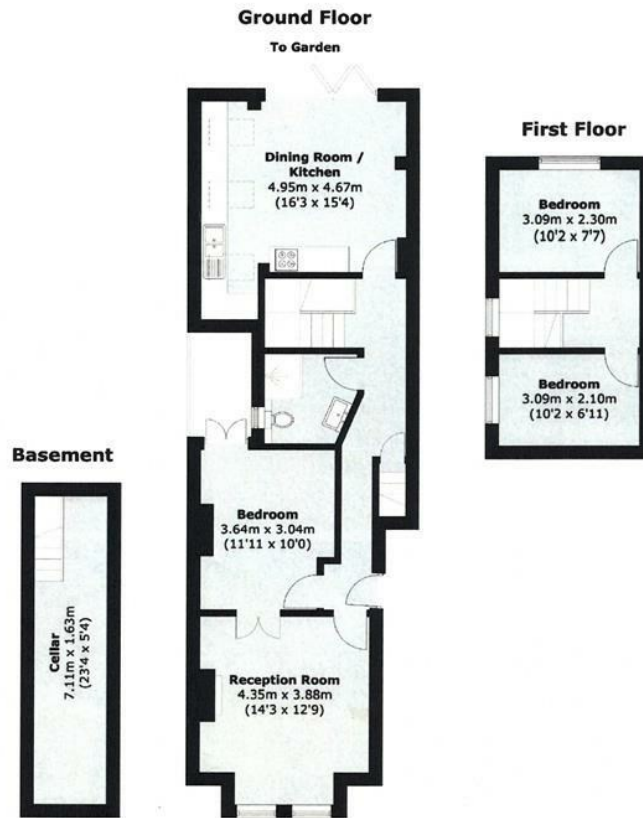


www.maalems.co.uk
 Earlsfield & Wandsworth Office
 344 Garratt Lane
 Earlsfield, London SW18 4EL
 T: 020 8875 9200
earlsfield@maalems.co.uk

Registered in England & Wales No. 5585458



Total area (approx.): 96.6 sq. m (1,039.7 sq. ft)



For an instant or face to face valuation, please scan the QR code:



www.maalems.co.uk
Earlsfield & Wandsworth Office
344 Garratt Lane
Earlsfield, London SW18 4EL
T: 020 8875 9200
earlsfield@maalems.co.uk

Registered in England & Wales No. 5585458

