



## STEERFORTH STREET, SW18 4HH

### Asking Price £700,000

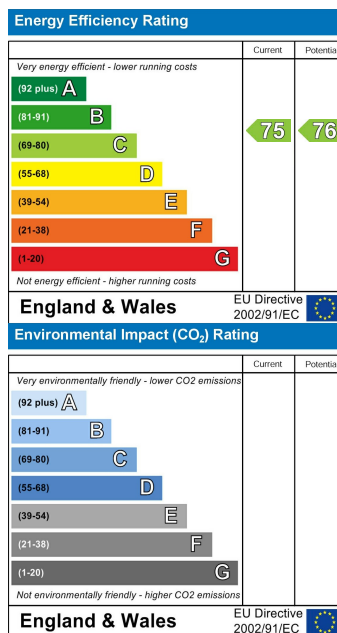
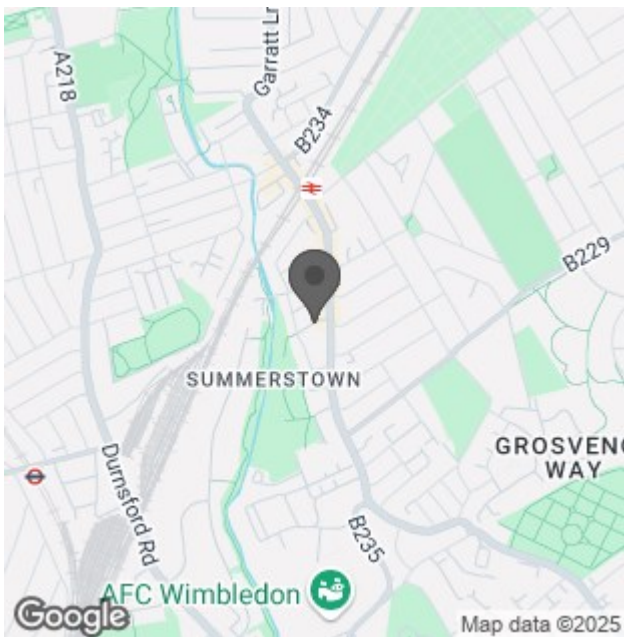
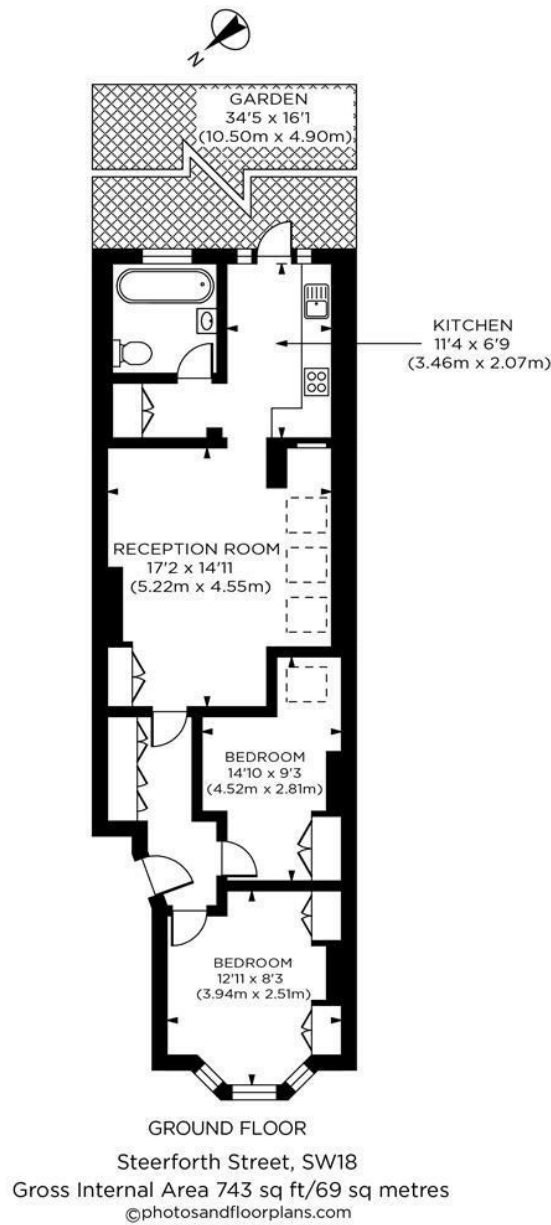
A beautifully presented ground floor conversion flat, ideally situated on a highly sought-after residential road in the heart of Earlsfield. This stunning property combines classic period charm with stylish modern finishes and is just moments from the mainline station, as well as the vibrant array of shops, cafés, and restaurants the area has to offer. Offering exceptional living space throughout, the flat features wood flooring in the living areas, elegant period details, and two generous double bedrooms. There is also a useful study area, a sleek modern bathroom, and a lovely kitchen that opens out to a glorious 35ft south-facing private garden — perfect for entertaining or relaxing in the sun. The bright and spacious 17ft x 14ft reception room is flooded with natural light, providing a welcoming and versatile living space. This is a fantastic opportunity to secure a truly special home in a prime Earlsfield location. Share of Freehold. EPC rating C. Council Tax Band C. Please see the virtual tour provided: <https://my.matterport.com/show/?m=1TLc6SS3bfr>.



[www.maalems.co.uk](http://www.maalems.co.uk)  
 Earlsfield & Wandsworth Office  
 344 Garratt Lane  
 Earlsfield, London SW18 4EL  
 T: 020 8875 9200  
[earlsfield@maalems.co.uk](mailto:earlsfield@maalems.co.uk)

Registered in England & Wales No. 5585458





For an instant or face to face valuation, please scan the QR code:



[www.maalems.co.uk](http://www.maalems.co.uk)

Earlsfield & Wandsworth Office  
 344 Garratt Lane  
 Earlsfield, London SW18 4EL  
 T: 020 8875 9200  
 earlsfield@maalems.co.uk

Registered in England & Wales No. 5585458

