



MERTON ROAD, SW18 5LE

Asking Price £500,000

We are delighted to offer to the market this two bedroom ground-floor period maisonette with private rear garden. The accommodation comprises front reception room, a double bedroom, a single bedroom, kitchen, bathroom, and a rear garden. In addition, there is also no onward chain. Merton Road is situated within close proximity to all the amenities the Earlsfield area has to offer. It is within a few minutes' walk of both King George Park, Earlsfield Mainline Station and Wimbledon Park Tube Station. Share of Freehold. Council Tax Band C. EPC rating C. Please see the virtual tour provided: <https://my.matterport.com/show/?m=SnUWa2Aemmn>.

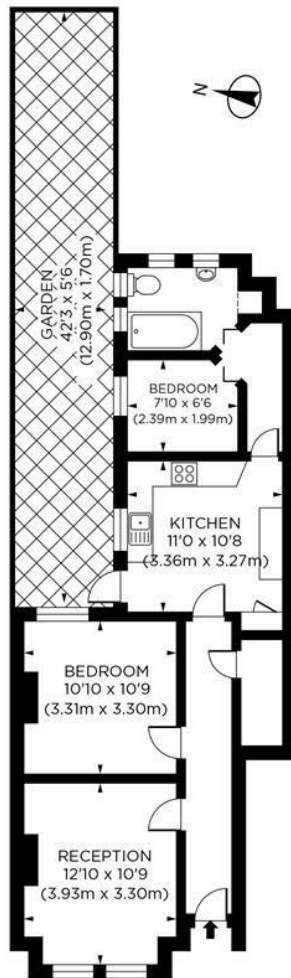


www.maalems.co.uk

Earlsfield & Wandsworth Office
344 Garratt Lane
Earlsfield, London SW18 4EL
T: 020 8875 9200
earlsfield@maalems.co.uk

Registered in England & Wales No. 5585458



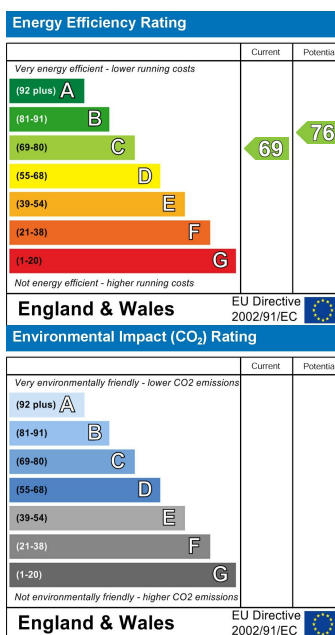
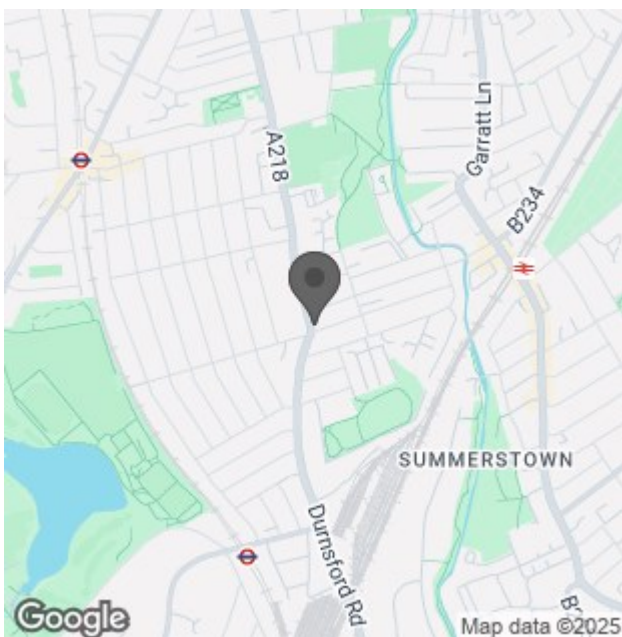


GROUND FLOOR

Merton Road, SW18

Gross Internal Area 646 sq ft/60 sq metres

©photosandfloorplans.com



For an instant or face to face valuation, please scan the QR code:



www.maalems.co.uk

Earlsfield & Wandsworth Office

344 Garratt Lane

Earlsfield, London SW18 4EL

T: 020 8875 9200

earlsfield@maalems.co.uk

Registered in England & Wales No. 5585458

