



STRATHDON DRIVE, SW17 0PW

Offers Over £300,000

Welcome to this charming flat located on Strathdon Drive which is well located for Earlsfield Mainline Station and Tooting Broadway Underground Station. This property boasts a bright reception room, perfect for relaxing or entertaining guests, a spacious double bedroom, and a decent bathroom. Situated in a desirable location, this flat offers easy access to all the amenities and attractions that the area has to offer. Whether you're looking for a peaceful evening at home or a night out in this popular area, this property provides the perfect balance. Don't miss out on the opportunity to make this flat your new home. Contact us today to arrange a viewing and experience the charm of Strathdon Drive for yourself! Leasehold. EPC rating C. Council Tax Band B. Please see the virtual tour provided: <https://my.matterport.com/show/?m=8icEHpKFax2>.

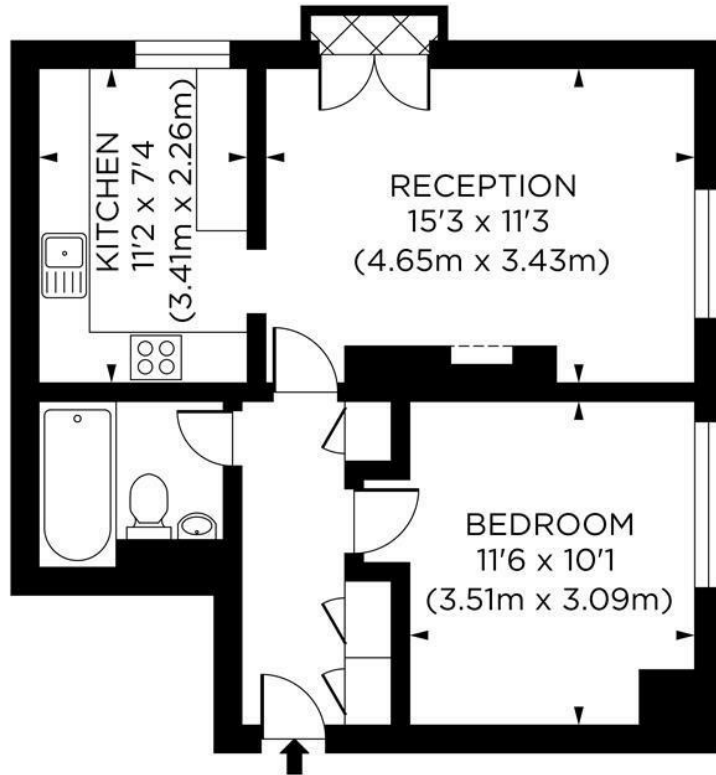
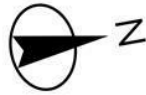


www.maalems.co.uk

Earlsfield & Wandsworth Office
344 Garratt Lane
Earlsfield, London SW18 4EL
T: 020 8875 9200
earlsfield@maalems.co.uk

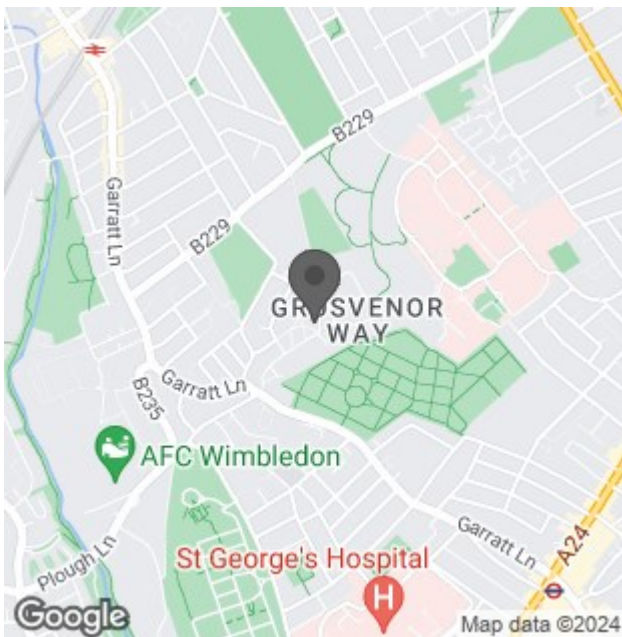
Registered in England & Wales No. 5585458





FOURTH FLOOR

Strathdon Drive, SW17
 Gross Internal Area 495 sq ft/46 sq metres
 ©photosandfloorplans.com



Energy Efficiency Rating		Current	Potential
Very energy efficient - lower running costs			
(92 plus) A			
(81-91) B			
(69-80) C		69	76
(55-68) D			
(39-54) E			
(21-38) F			
(1-20) G			
Not energy efficient - higher running costs			
England & Wales		EU Directive 2002/91/EC	
Environmental Impact (CO ₂) Rating		Current	Potential
Very environmentally friendly - lower CO ₂ emissions			
(92 plus) A			
(81-91) B			
(69-80) C			
(55-68) D			
(39-54) E			
(21-38) F			
(1-20) G			
Not environmentally friendly - higher CO ₂ emissions			
England & Wales		EU Directive 2002/91/EC	

For an instant or face to face valuation, please scan the QR code:



www.maalems.co.uk
 Earlsfield & Wandsworth Office
 344 Garratt Lane
 Earlsfield, London SW18 4EL
 T: 020 8875 9200
 earlsfield@maalems.co.uk
 Registered in England & Wales No. 5595458