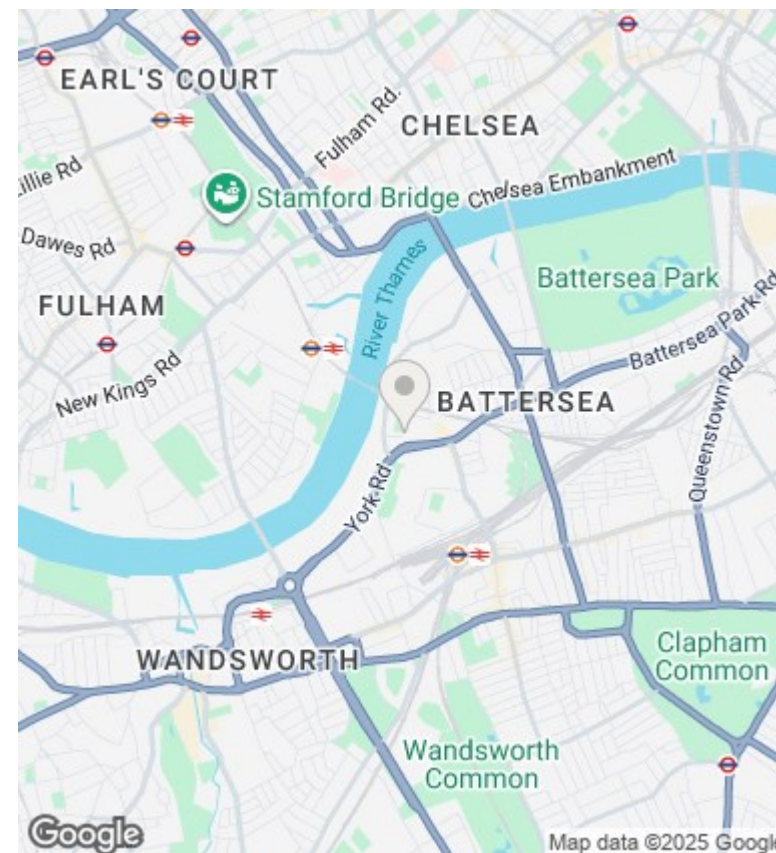
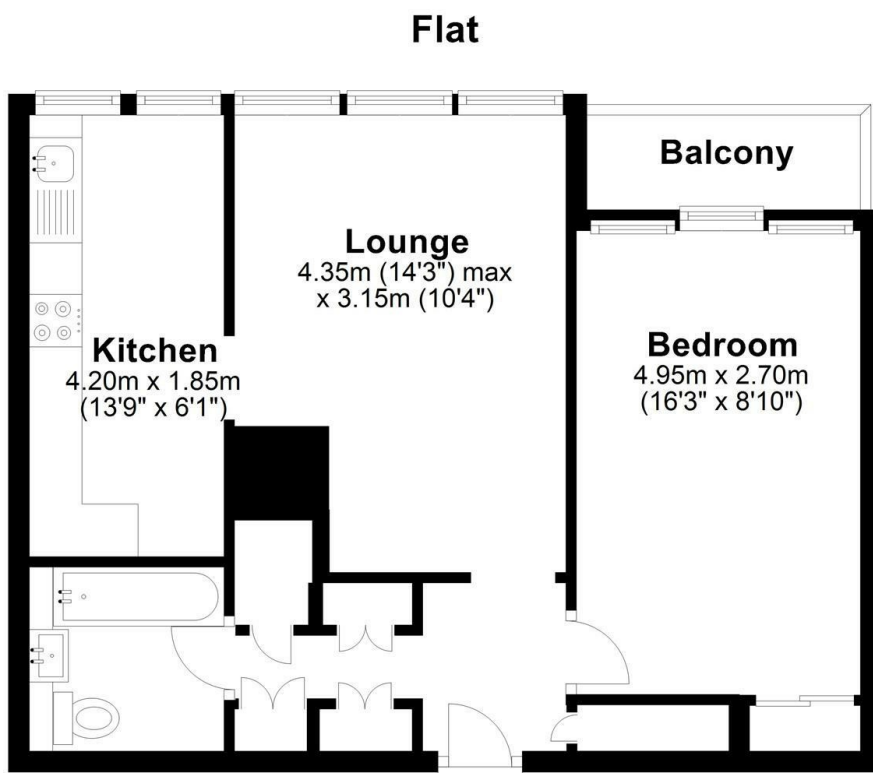




## 76 Totteridge House, Yelverton Road, London, SW11 3QH

£1,750 PCM

- Immaculately Presented
- 180 Degree Views of London Skyline
- Modern Bathroom with Shower
- Wandsworth Council Tax Band B
- 13th Floor Flat (Two Lifts)
- Separate Kitchen with Dishwasher
- Secure Bicycle Storage Shed
- Private Balcony
- Extensive Storage Throughout
- Well Maintained Communal Gardens



## Directions

## Viewings

Viewings by arrangement only. Call 020 7585 2761 to make an appointment.

## Council Tax Band

B

## EPC Rating:

C

Energy Efficiency Rating		
	Current	Potential
Very energy efficient - lower running costs		
(92 plus) <b>A</b>		
(81-91) <b>B</b>		
(69-80) <b>C</b>	74	75
(55-68) <b>D</b>		
(39-54) <b>E</b>		
(21-38) <b>F</b>		
(1-20) <b>G</b>		
Not energy efficient - higher running costs		
<b>England &amp; Wales</b>	EU Directive 2002/91/EC	