

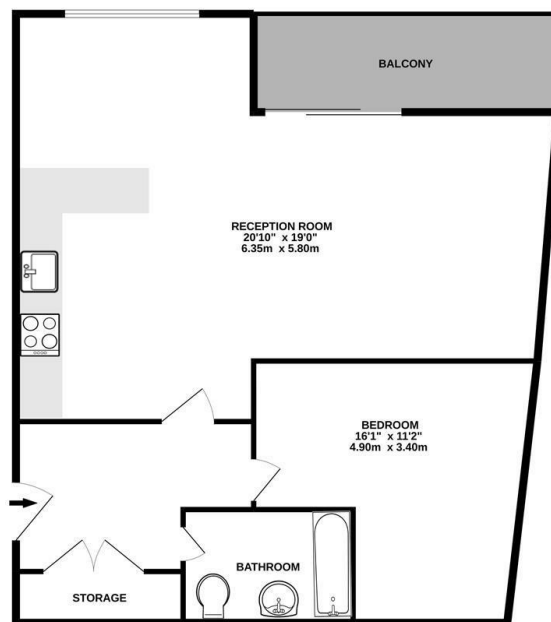
URBAN lettings



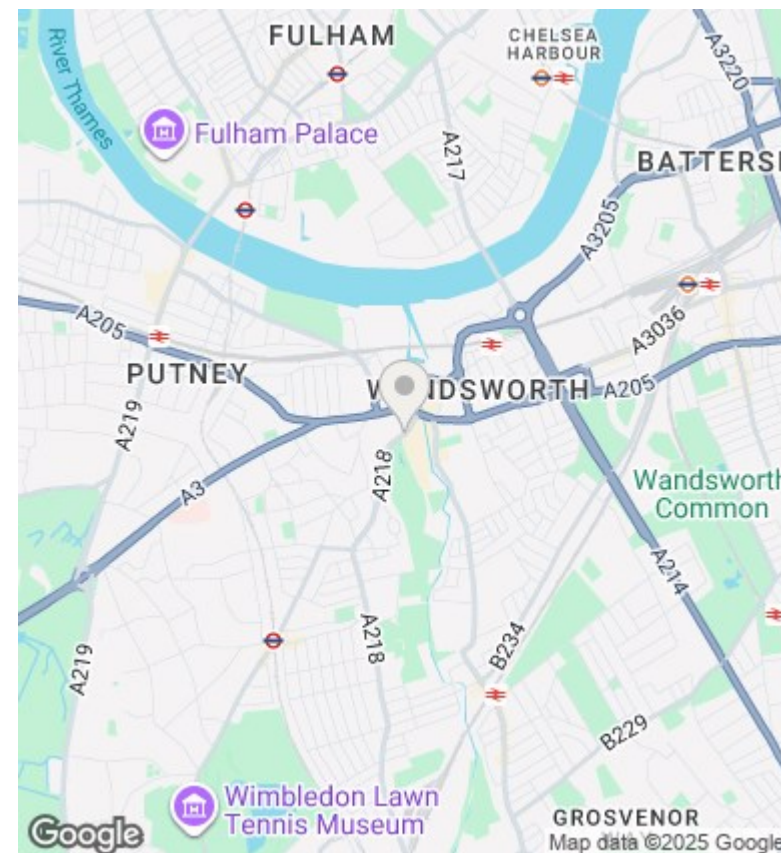
33, 16, Copperlight Apartments Buckhold Road, London, £2,100 Per Month

- Modern Residential Development
- Roof Terrace
- Contemporary Kitchen
- Wandsworth Council Tax Band D
- 24 Hour Concierge
- Approx. 590 sq. ft.
- Secure Underground Parking Available at Additional Cost
- Secure Bicycle Storage
- Open Plan Living
- Floor to Ceiling Windows

THIRD FLOOR
590 sq.ft. (54.8 sq.m.) approx.



TOTAL FLOOR AREA: 590 sq.ft. (54.8 sq.m.) approx.
Whilst every attempt has been made to ensure the accuracy of the floorplan, the measurements of doors, windows, rooms and any other items are approximate and no responsibility is taken for any error, omission or misstatement. This plan is for illustrative purposes only and should be used as such by any prospective purchaser. The services, systems and appliances shown have not been tested and no guarantee is given as to their operability or efficiency at the time of writing.
Made with Metropix ©2022



Directions

Viewings

Viewings by arrangement only. Call 020 7585 2761 to make an appointment.

Council Tax Band

EPC Rating:

B

Energy Efficiency Rating		
	Current	Potential
Very energy efficient - lower running costs		
(92 plus) A		
(81-91) B	82	82
(69-80) C		
(55-68) D		
(39-54) E		
(21-38) F		
(1-20) G		
Not energy efficient - higher running costs		
England & Wales	EU Directive 2002/91/EC	