



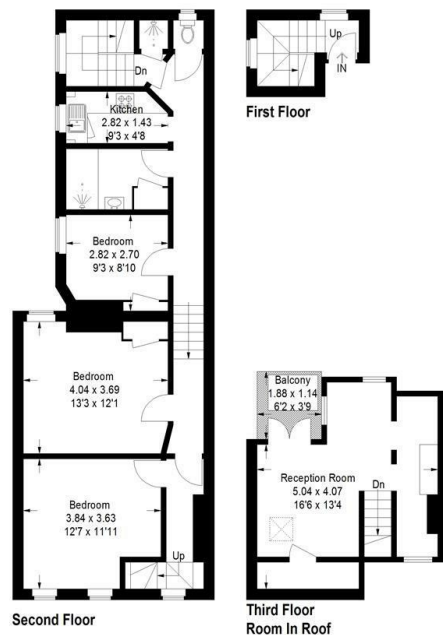
4 Broomwood Chambers, Broomwood Road, London, SW11

£3,200 PCM

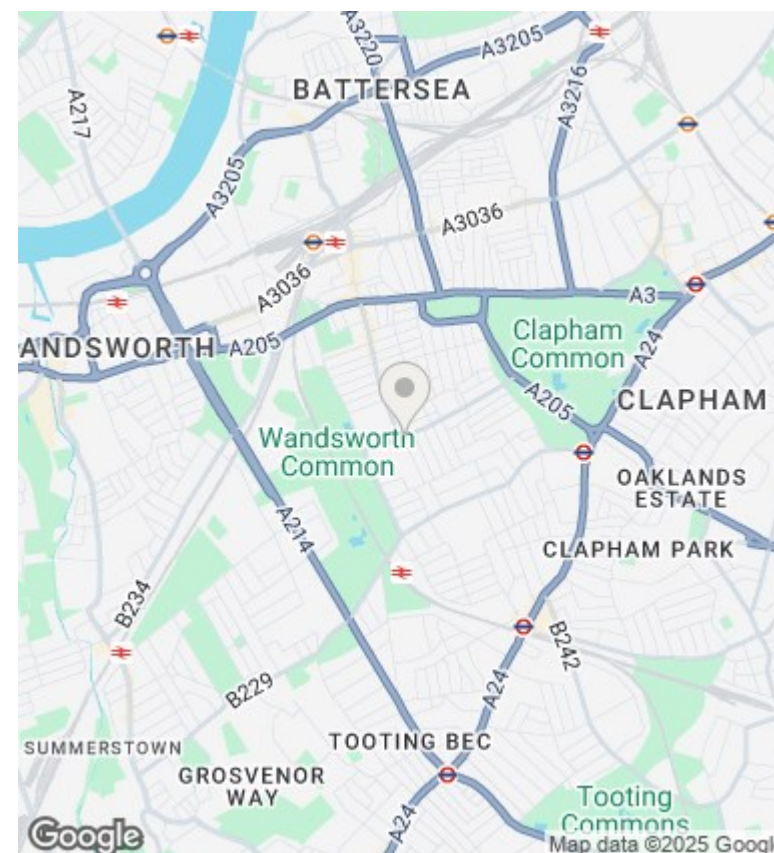
- Three Double Bedrooms
- Private Balcony
- In Excellent Decorative Order
- Wandsworth Council Tax Band C
- Two Bathrooms
- Spread over Two Floors
- Separate WC
- Modern Kitchen
- Separate Dual Aspect Living Room
- Access to both Tube & National Rail

4 Broomwood Chambers Broomwood Road, SW11

Approximate Gross Internal Area
97.8 sq m / 1053 sq ft



This plan is for layout guidance only. Not drawn to scale unless stated. Windows and door openings are approximate. Whilst every care is taken in the preparation of this plan, please check all dimensions, shapes and compass bearings before making any decisions reliant upon them. (ID1121748)



Directions

Viewings

Viewings by arrangement only. Call 020 7585 2761 to make an appointment.

Council Tax Band

C

EPC Rating:

D

Energy Efficiency Rating		
	Current	Potential
Very energy efficient - lower running costs		
(92 plus) A		
(81-91) B		
(69-80) C		
(55-68) D	66	71
(39-54) E		
(21-38) F		
(1-20) G		
Not energy efficient - higher running costs		
England & Wales	EU Directive 2002/91/EC	