

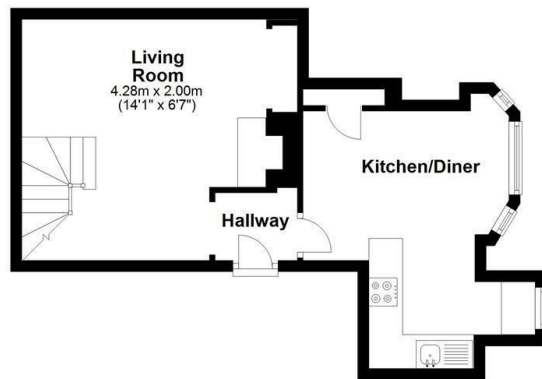


52B Lyford Road, London, SW18 3LS

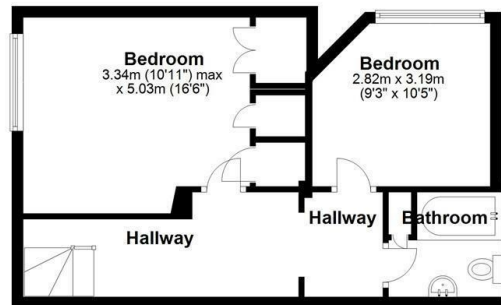
£3,700 Per Month

- Immaculate Two Double Bedroom
- Split Level
- Tastefully Furnished
- Wandsworth Council Tax
- Communal Garden
- Overlooking The Common
- Fitted Kitchen
- Separate Living Room
- Period Property
- Train Links From Wandsworth Common

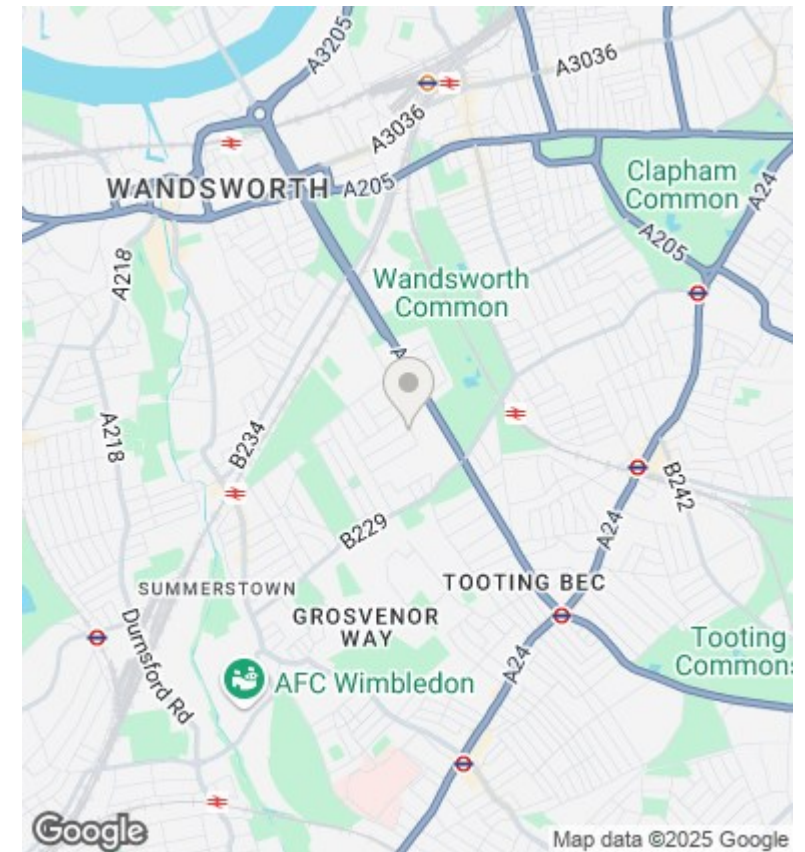
Ground Floor
Approx. 37.8 sq. metres (407.0 sq. feet)



First Floor
Approx. 39.7 sq. metres (426.9 sq. feet)



Total area: approx. 77.5 sq. metres (833.9 sq. feet)



Directions

Viewings

Viewings by arrangement only. Call 020 7585 2761 to make an appointment.

Council Tax Band

EPC Rating:

E

Energy Efficiency Rating		
	Current	Potential
Very energy efficient - lower running costs		
(92 plus) A		
(81-91) B		
(69-80) C		71
(55-68) D		
(39-54) E	45	
(21-38) F		
(1-20) G		
Not energy efficient - higher running costs		
England & Wales	EU Directive 2002/91/EC	