

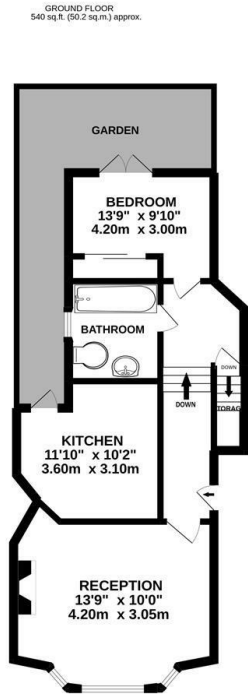
URBAN lettings



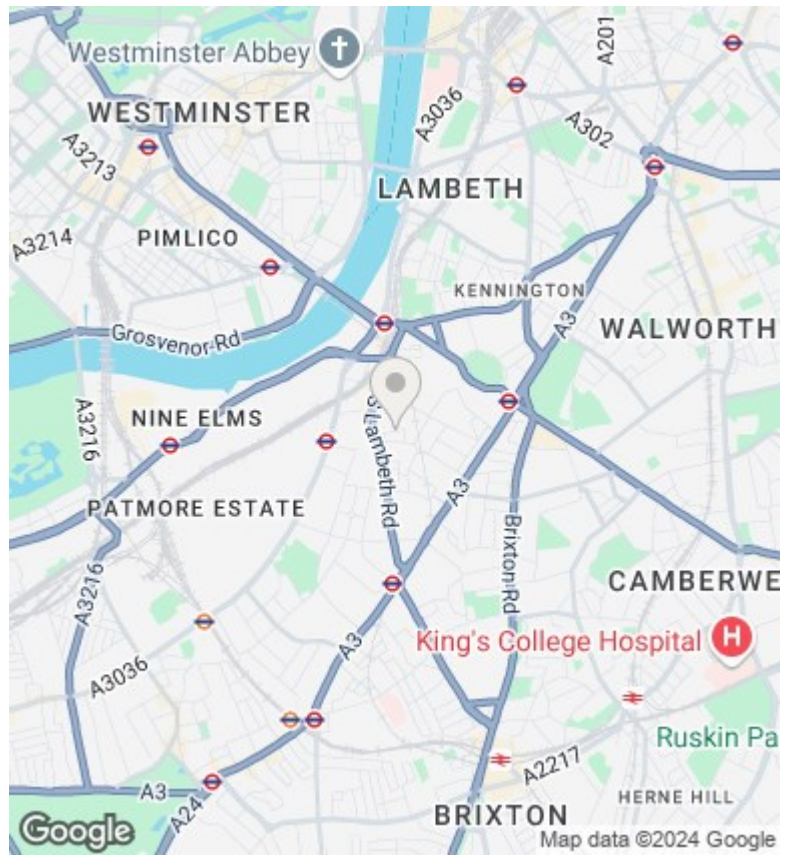
Ground Floor Flat, 20 Heyford Avenue, London, SW8 1ED

£1,930 PCM

- Well Presented
- Feature Fireplace
- Separate Living Room
- Heart of 'Little Portugal'
- Ground Floor Period Flat
- Eat-In Kitchen with Dishwasher
- Pet Friendly
- Private Patio Garden
- Available Unfurnished
- Easy Access to Rail & Tube



TOTAL FLOOR AREA: 540 sq ft. (50.2 sq.m.) approx.
Whilst every attempt has been made to ensure the accuracy of the figures contained here, measurements of doors, windows, rooms and any other items are approximate and no responsibility is taken for any error, omission or misstatement. This plan is for guidance purposes only and should be used in conjunction with a prospective purchaser. The services, systems and appliances shown have not been tested and no guarantee as to their operability or efficiency can be given.
 Made with Immapix 12/2022



Directions

Viewings

Viewings by arrangement only. Call 020 7585 2761 to make an appointment.

Council Tax Band

C

EPC Rating:

D

Energy Efficiency Rating		
	Current	Potential
<i>Very energy efficient - lower running costs</i>		
(92 plus) A		
(81-91) B		
(69-80) C		
(55-68) D	67	74
(39-54) E		
(21-38) F		
(1-20) G		
<i>Not energy efficient - higher running costs</i>		
England & Wales	EU Directive 2002/91/EC	