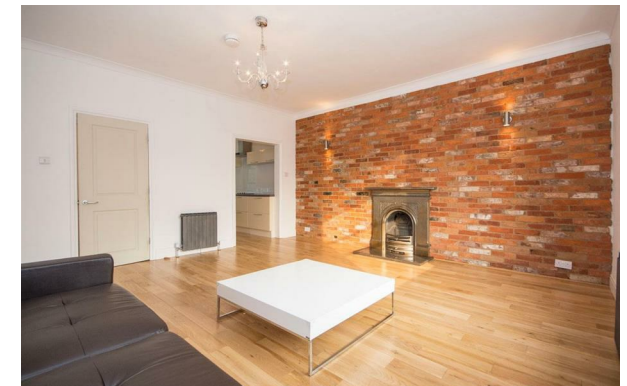


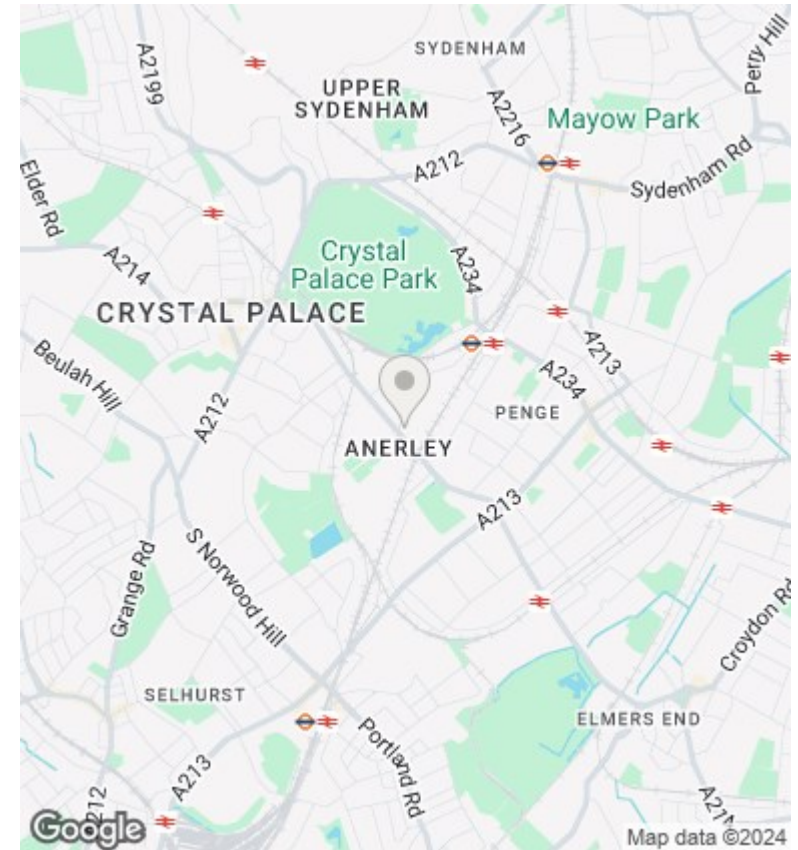
# URBAN lettings



## Flat 4, 19 Anerley Park, London, SE20 8NF

£1,500 PCM

- Finished to High Standard
- Close to Two Rail Networks
- Double Glazed Sash Windows
- Communal Garden
- Wood Flooring
- Council Tax Band C
- Parking Available
- First Floor Flat



### Directions

### Viewings

Viewings by arrangement only. Call 020 7585 2761 to make an appointment.

### Council Tax Band

C

### EPC Rating:

D

Energy Efficiency Rating		Current	Potential
<i>Very energy efficient - lower running costs</i>			
(92 plus) <b>A</b>			
(81-91) <b>B</b>			79
(69-80) <b>C</b>			
(55-68) <b>D</b>		56	
(39-54) <b>E</b>			
(21-38) <b>F</b>			
(1-20) <b>G</b>			
<i>Not energy efficient - higher running costs</i>			
<b>England &amp; Wales</b>		EU Directive 2002/91/EC	