

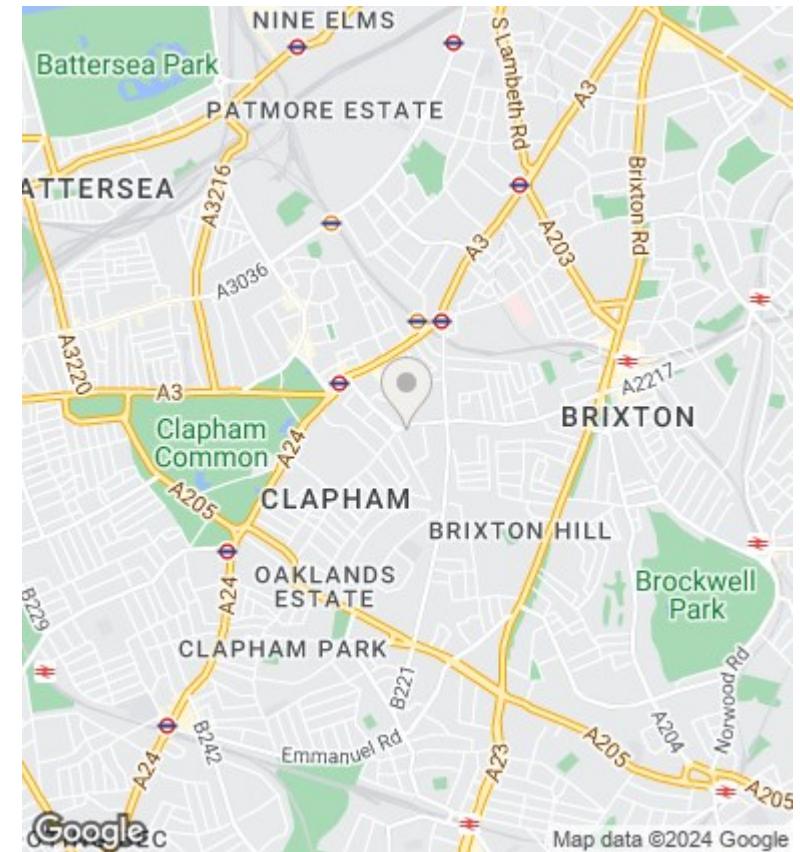
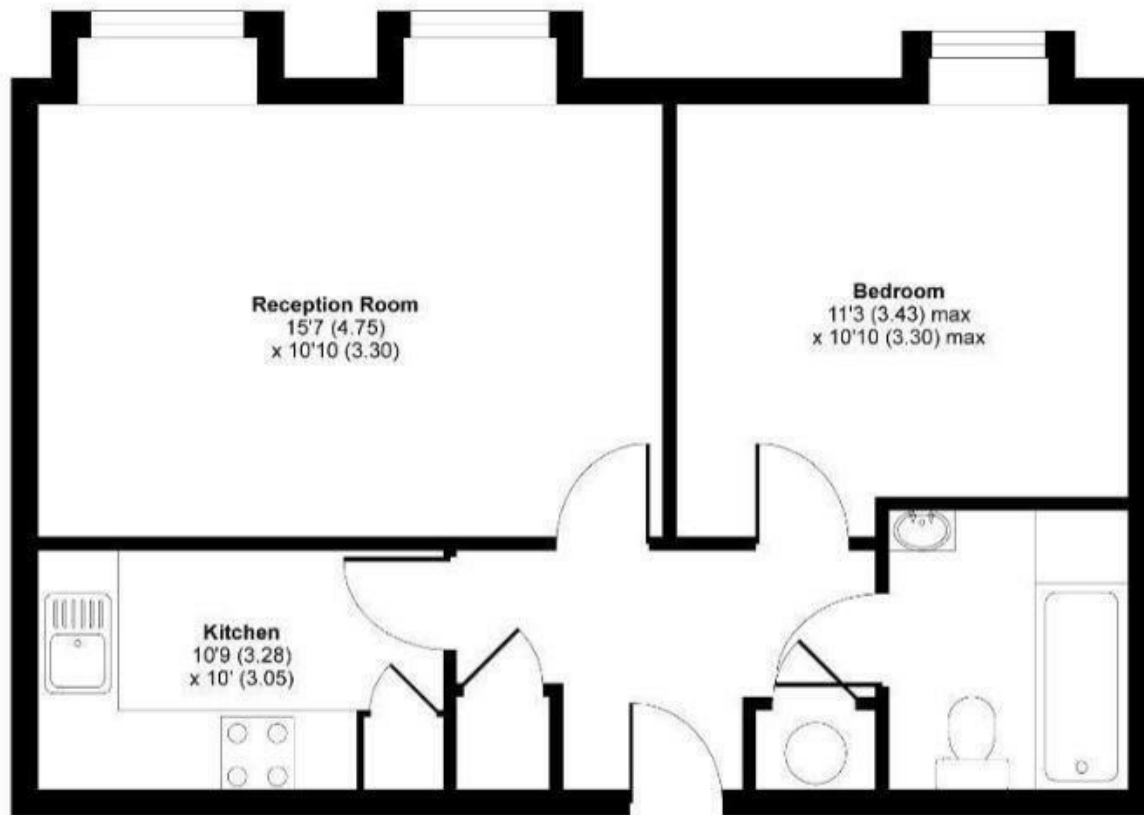
URBAN lettings



12 St Pauls Court, 146 Clapham Park Road, London, SW4

£1,800 PCM

- Modern Apartment
- Secure Off Street Parking
- Double Galzed Windows
- Short Walk to Tube Networks
- 2nd Floor (Lift)
- Light and Bright
- Hard Wood Flooring
- Private Development
- Modern Kitchen
- Ample Storage



Directions

Viewings

Viewings by arrangement only. Call 020 7585 2761 to make an appointment.

Council Tax Band

D

EPC Rating:

D

Energy Efficiency Rating		
	Current	Potential
<i>Very energy efficient - lower running costs</i>		
(92 plus) A		
(81-91) B		
(69-80) C		
(55-68) D	61	67
(39-54) E		
(21-38) F		
(1-20) G		
<i>Not energy efficient - higher running costs</i>		
England & Wales	EU Directive 2002/91/EC	