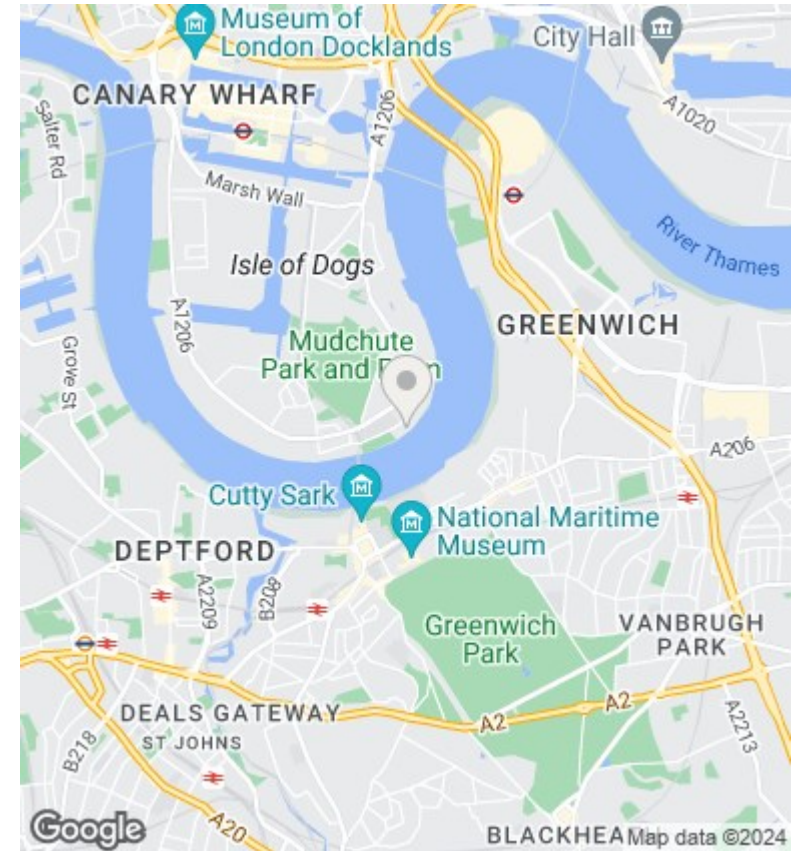
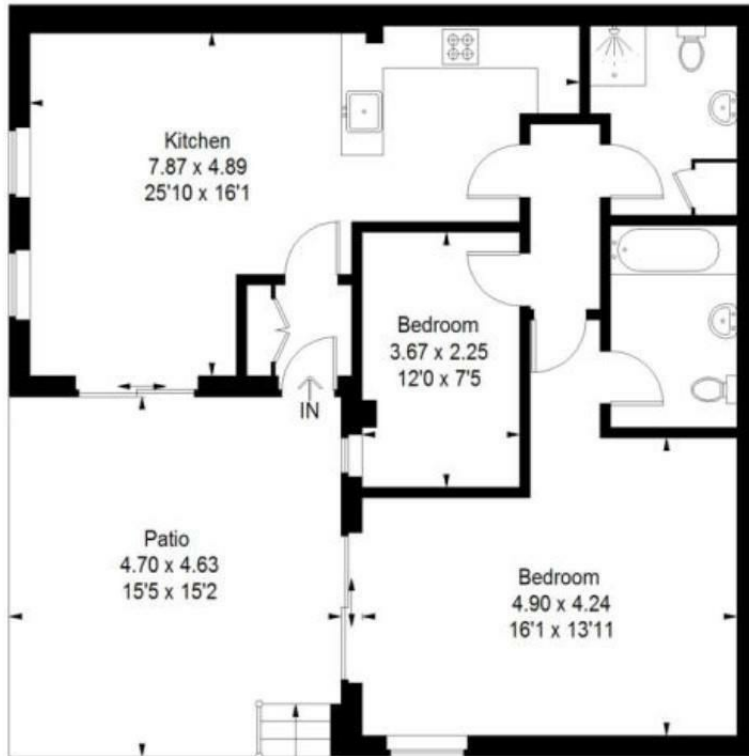




## 3 Cumberland Mills Square, London, London, E14 3BH

£2,250 PCM

- Two Double Bedrooms
- Porter Service
- Freshly Decorated and New Bedroom Carpets
- Gated Residential Development
- Two Bathrooms
- Allocated Garage Parking
- Private Terrace
- Open Plan Kitchen Living Room
- Views of the River Thames
- Close to Island Gardens DLR & Greenwich Foot Tunnel



## Directions

## Viewings

Viewings by arrangement only. Call 020 7585 2761 to make an appointment.

## Council Tax Band

F

## EPC Rating:

D

Energy Efficiency Rating		Current	Potential
<i>Very energy efficient - lower running costs</i>			
(92 plus) <b>A</b>			
(81-91) <b>B</b>			
(69-80) <b>C</b>			<b>74</b>
(55-68) <b>D</b>		<b>62</b>	
(39-54) <b>E</b>			
(21-38) <b>F</b>			
(1-20) <b>G</b>			
<i>Not energy efficient - higher running costs</i>			
<b>England &amp; Wales</b>		EU Directive 2002/91/EC	