

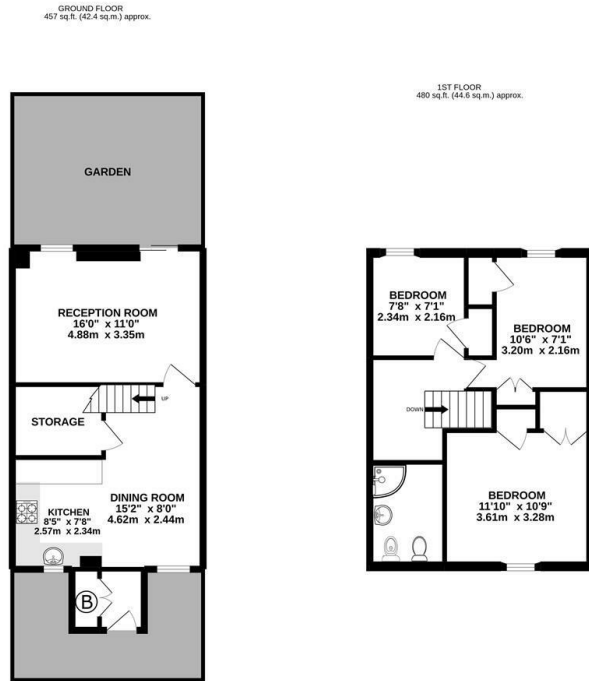
URBAN lettings



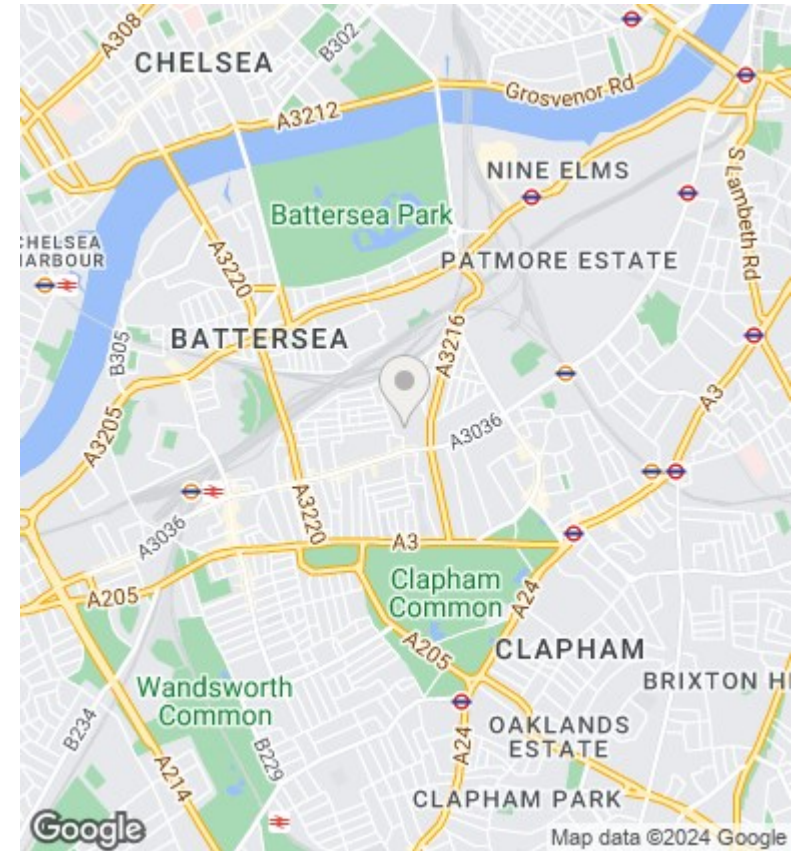
10 Evesham Way, London, SW11 5QX

£2,800 PCM

- Immaculately Presented
- Extensive Storage Throughout
- Dining Room & Utility Room
- Wandsworth Council Tax Band D
- Terraced House
- Three Bedrooms
- Separate Reception
- Private Garden
- Modern Kitchen with Dishwasher
- Double Glazing



TOTAL FLOOR AREA: 937 sq.ft. (87.0 sq.m.) approx.
Whilst every attempt has been made to ensure the accuracy of the figures contained here, measurements of doors, windows, rooms and any other items are approximate and no responsibility is taken for any error, omission or misstatement. This plan is for guidance purposes only and should be used in conjunction with any prospective purchase. The services, systems and appliances shown have not been tested and no guarantee is given as to their operability or efficiency at the time.
 Made with MetreX 12/2022



Directions

Viewings

Viewings by arrangement only. Call 020 7585 2761 to make an appointment.

Council Tax Band

D

EPC Rating:

C

