

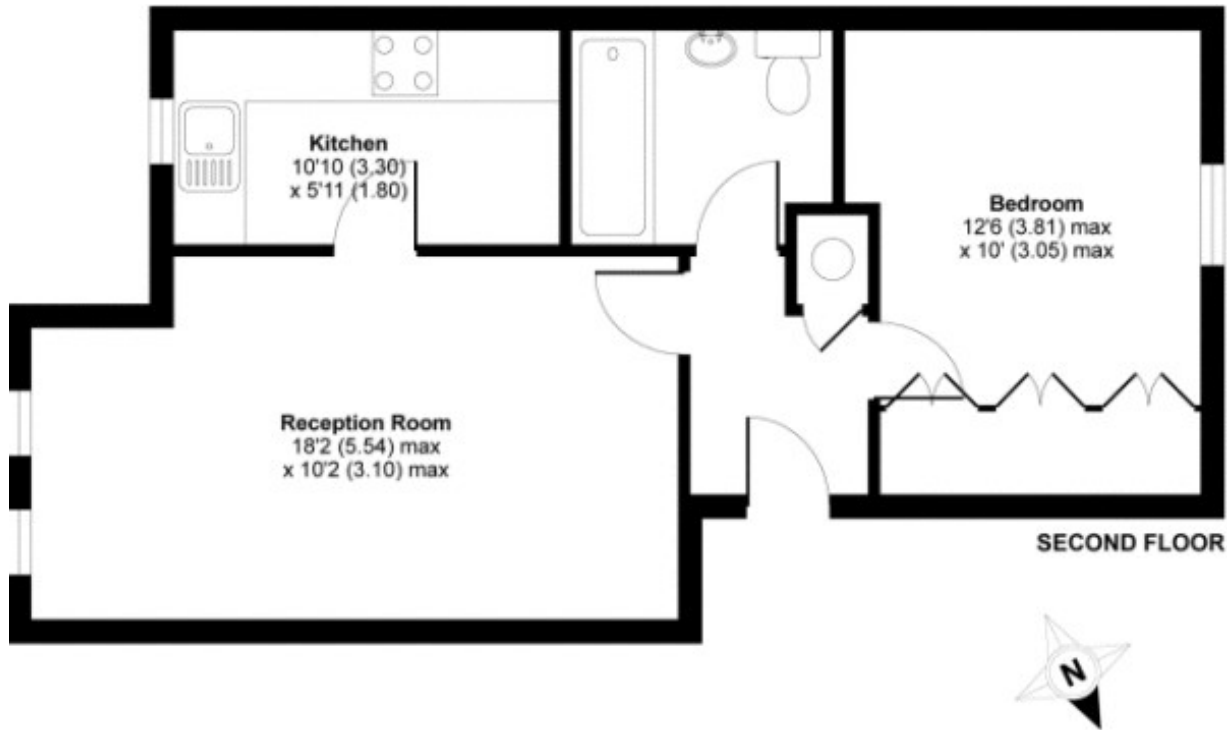
URBAN lettings



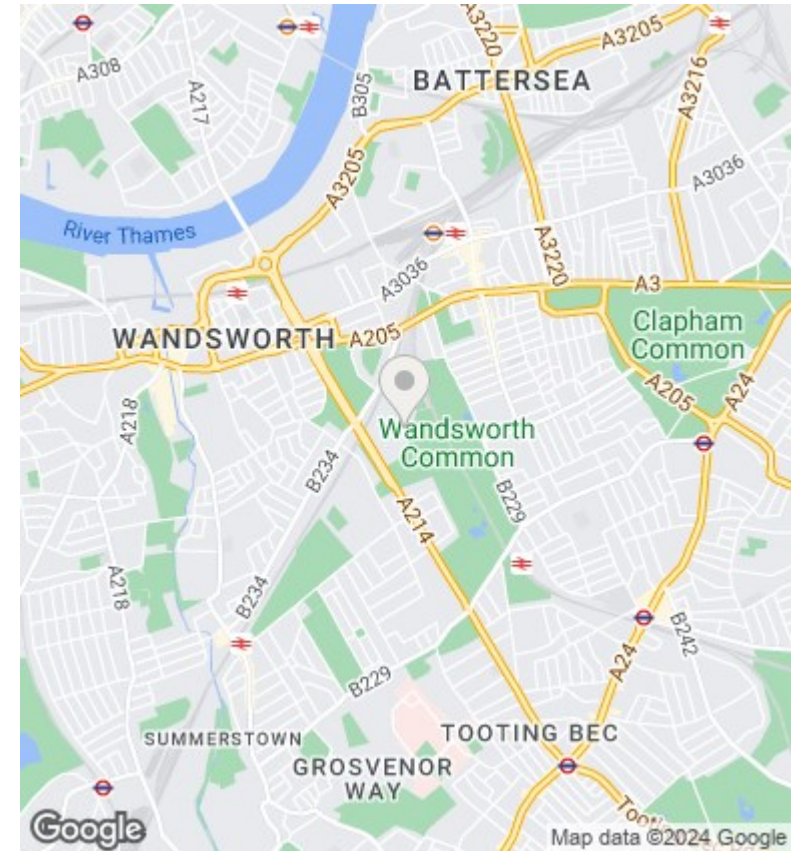
95 John Archer Way, London, SW18 2TT

£1,650 PCM

- Rent Includes Water Rates
- Off Street Parking
- Loft Space Ideal for Storage
- Short Walk to Clapham Junction
- Immaculately Presented Top Floor Flat
- Spacious Living Room
- Double Glazing
- Overlooking Wandsworth Common
- Separate Kitchen
- Quiet Residential Area



APPROX. GROSS INTERNAL FLOOR AREA 449 SQ FT 41.7 SQ METRES
John Archer Way, London, SW18



Directions

Viewings

Viewings by arrangement only. Call 020 7585 2761 to make an appointment.

Council Tax Band

D

EPC Rating:

C

Energy Efficiency Rating		Current	Potential
<i>Very energy efficient - lower running costs</i>			
(92 plus)	A		
(81-91)	B	75	82
(69-80)	C		
(55-68)	D		
(39-54)	E		
(21-38)	F		
(1-20)	G		
<i>Not energy efficient - higher running costs</i>			
England & Wales		EU Directive 2002/91/EC	