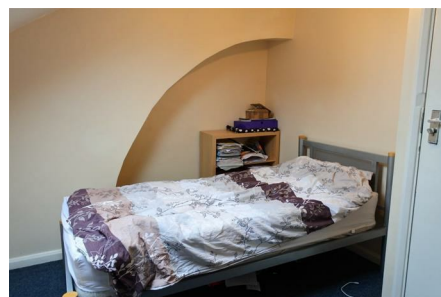
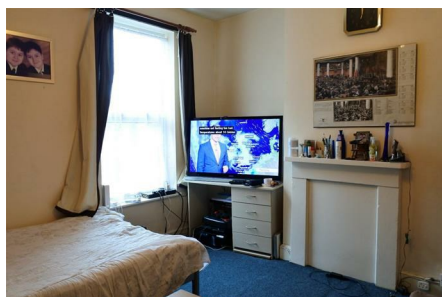


Crookesmoor Road, Sheffield, S10

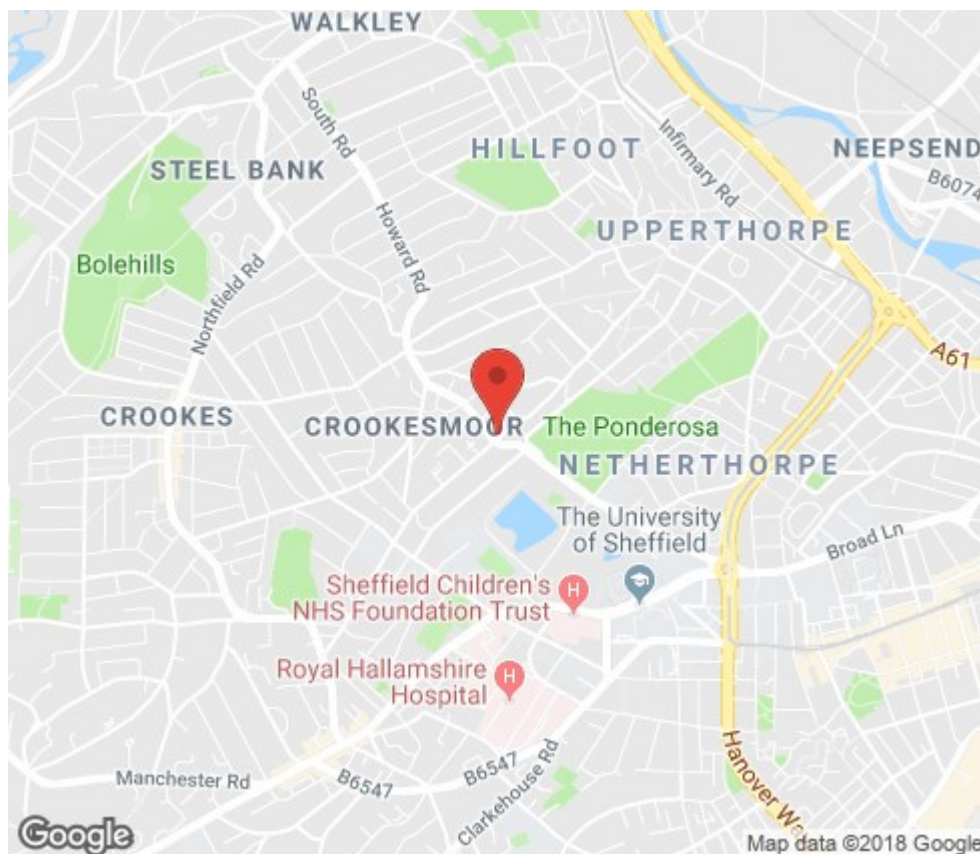


£485 Per month



Furnished 2 BED APARTMENT located within a sought after residential area of CROOKES S10, close to Sheffield University and Hospitals. The property provides access to excellent transport links to the City Centre and Western Park.

- * Kitchen/Diner
- * Small lobby area
- * Large lounge, 2 Single Bedrooms
- * Bathroom with shower over bath
- * Double Glazing, Gas Central Heating
- * Would suit working professionals or students due to it's location



Energy Efficiency Rating		
	Current	Potential
Very energy efficient - lower running costs		
(92 plus) A		
(81-91) B		
(69-80) C		
(55-68) D	52	59
(39-54) E		
(21-38) F		
(1-20) G		
Not energy efficient - higher running costs		
England & Wales		EU Directive 2002/91/EC
Environmental Impact (CO ₂) Rating		
	Current	Potential
Very environmentally friendly - lower CO ₂ emissions		
(92 plus) A		
(81-91) B		
(69-80) C		
(55-68) D	45	52
(39-54) E		
(21-38) F		
(1-20) G		
Not environmentally friendly - higher CO ₂ emissions		
England & Wales		EU Directive 2002/91/EC