



MAYHALL COURT  
PRIVATE NO PARKING



ANDREW SAVILLE  
Estate Agent

# Mayhall Court, Westway, Maghull L31 0EB

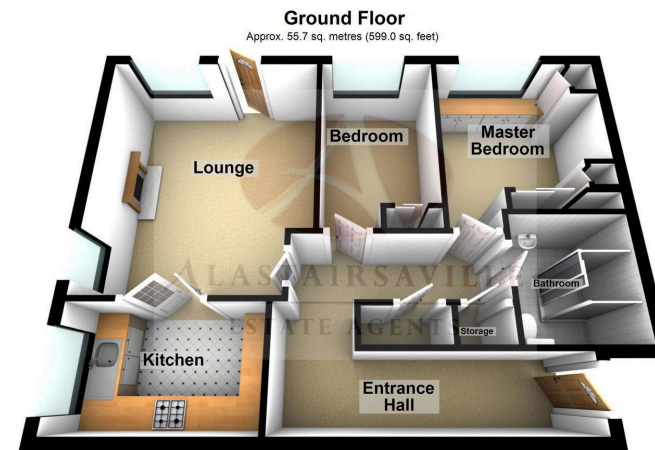
£137,000

🛏️ 2 🚿 1 🚻 1



- Ground Floor Spacious Apartment
- Beautifully Presented Throughout
- Two Large Storage Cupboards
- Shower Room
- EPC Rating- D
- Two Good Sized Bedrooms
- Lounge/ Diner With Door To Communal Gardens
- Kitchen
- No Onward Chain
- Council Tax Band- D





Total area: approx. 55.7 sq. metres (599.0 sq. feet)

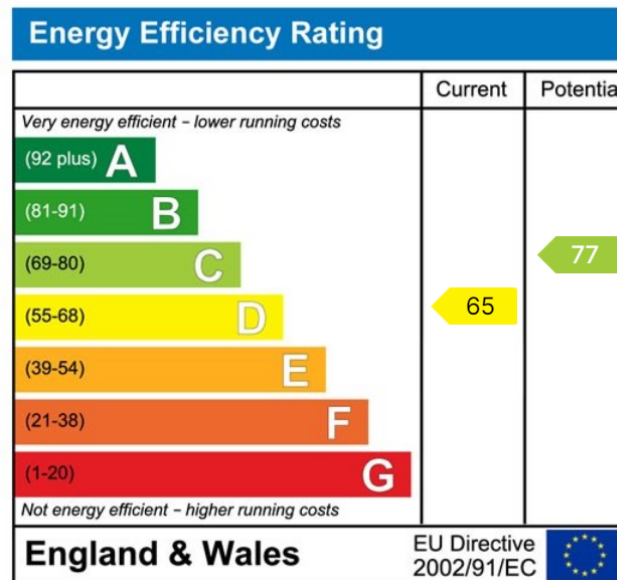
AEA (Aughton energy Assessors) provide this Floor Plan as a guide to the overall dimensions of the property. Dimensions are approximate and do not pertain to be absolutely accurate but are provided as a guide.

Plan produced using PlanUp.

**11 Mayhall Court, Maghull**

TWO BEDROOM GROUND FLOOR RETIREMENT APARTMENT, PRIVATE CORNER POSITION, LOUNGE WITH DOOR ONTO COMMUNAL GARDENS, NO CHAIN, CLOSE TO SHOPS AND AMENITIES.

Situated at the far end of the ground floor in a quiet corner, overlooking the communal gardens to the front of the development, this spacious two bedroom apartment is being sold with no chain. In brief the property comprises horse shoe shaped entrance hall with two large storage cupboards, a lounge with door to garden and double doors to the kitchen, two bedrooms and a shower room. Mayhall Court is a McCarthy & Stone retirement development with a minimum resident age of 60 years or, if a couple, for one partner to be over 60 and the other over 55 years of age. The development offers communal lounge and gardens with an on site warden.



**Alastair Saville Estate Agents**  
 25 Central Square • Maghull • Liverpool • L31 0AE  
 138 Ormskirk Road • Old Roan • Liverpool • L10 3JG  
 Tel: 0151 520 0001 • Website: [www.alastairsaville.com](http://www.alastairsaville.com)  
 Email: [sales@alastairsaville.com](mailto:sales@alastairsaville.com) • [lettings@alastairsaville.com](mailto:lettings@alastairsaville.com)

