



Gulwell Drive, Wickwar Wotton-Under-Edge GL12 8FN

welcome to

Gulwell Drive, Wickwar Wotton-Under-Edge

****GENEROUS CORNER PLOT**SOUTH FACING****A four bedroom executive detached family home located in Wickwar, Wotton-Under-Edge. Accommodation comprises; Entrance, Study, Lounge, Four good sized bedrooms, Ensuite & Family Bathroom. The property further benefits with a generous garden, driveway & garage.

Entrance Hall

Double glazed door to front, under stairs cupboard

Cloakroom

W/C, wash hand basin, radiator, wood effect luxury vinyl tiled flooring

Lounge

17' 7" x 10' 7" (5.36m x 3.23m)

French doors to garden, double glazed window to front, wood effect luxury vinyl tiled flooring

Kitchen/Diner

17' 3" x 12' 8" (5.26m x 3.86m)

Double glazed window to side, French doors to garden patio, a modern fitted kitchen with both wall and floor units with marble effect worktops over, upstands, stainless steel sink and drainer, electric oven, gas hob with cooker hood over, integrated dishwasher & space for American style fridge freezer, spotlights inset to ceiling, wood effect luxury vinyl tiled flooring.

Utility Room

Double glazed window to side, both wall and floor units with work surfaces over, upstands, stainless steel sink and drainer, space for washing machine & tumble dryer, wall mounted boiler, spotlights inset to ceiling, wood effect luxury vinyl tiled flooring

Landing

Galleried landing, double glazed window to front, radiator, loft access

Bedroom One

10' 6" x 9' 9" (3.20m x 2.97m)

Double glazed window to side, dressing area, radiator

Ensuite

Double glazed window to rear, w/c, wash hand basin, double shower, radiator, wood effect luxury vinyl tiled flooring

Bedroom Two

10' 6" x 10' 4" (3.20m x 3.15m)

Double glazed window to front, radiator

Bedroom Three

11' 11" x 9' 5" (3.63m x 2.87m)

Double glazed window to side looking over field space, radiator

Bedroom Four

11' 11" x 7' 6" (3.63m x 2.29m)

Double glazed window to side, radiator

Bathroom

Double glazed window to side, w/c, wash hand basin, thermostat controlled shower over bath, mixer taps, tiled flooring

Rear Garden

Fully enclosed by boundary wall & fence, South Facing, patio laid to lawn, gated side access to driveway & garage

Garage

Up & over door to front, light, power and electric vehicle charging point





view this property online [allenandharris.co.uk/Property/CPS104873](https://www.allenandharris.co.uk/Property/CPS104873)



welcome to

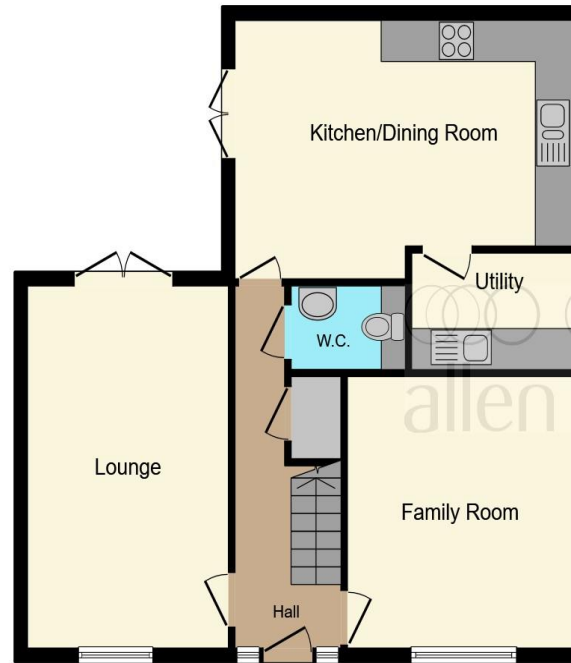
Gulwell Drive, Wickwar Wotton-Under-Edge

- SOUTHERLY FACING GARDEN
- FOUR BEDROOM EXECUTIVE DETACHED FAMILY HOME
- TWO RECEPTION ROOMS & KITCHEN/DINER
- CLOAKROOM & ENSUITE
- GENEROUS CORNER PLOT

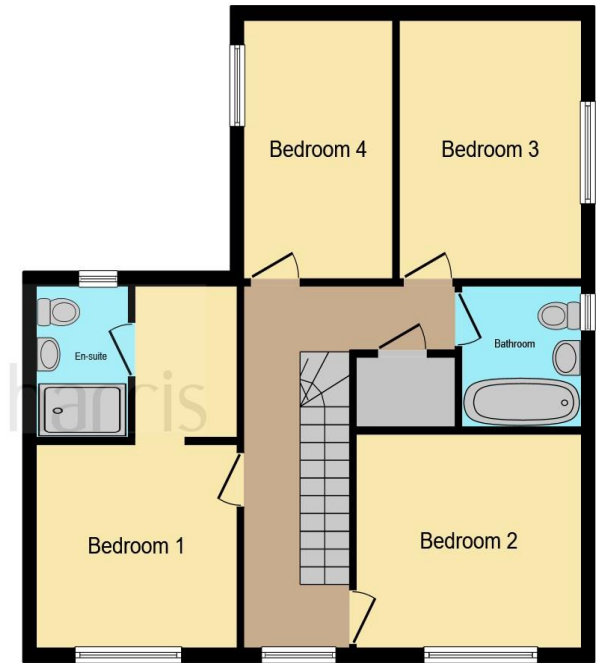
Tenure: Freehold EPC Rating: B

offers in the region of

£550,000



Ground Floor



First Floor

This floor plan is for illustrative purposes only. It is not drawn to scale. Any measurements, floor areas (including any total floor area), openings and orientation are approximate. No details are guaranteed, they cannot be relied upon for any purpose and they do not form part of any agreement. No liability is taken for any error, omission or misstatement. A party must rely upon its own inspection(s). Powered by www.focalagent.com

view this property online allenandharris.co.uk/Property/CPS104873



Property Ref:
CPS104873 - 0007

1. MONEY LAUNDERING REGULATIONS Intending purchasers will be asked to produce identification documentation at a later stage and we would ask for your co-operation in order that there is no delay in agreeing the sale. 2. These particulars do not constitute part or all of an offer or contract. 3. The measurements indicated are supplied for guidance only and as such must be considered incorrect. Potential buyers are advised to recheck measurements before committing to any expense. 4. We have not tested any apparatus, equipment, fixtures or services and it is in the buyers interest to check the working condition of any appliances. 5. Where an EPC, or a Home Report (Scotland only) is held for this property, it is available for inspection at the branch by appointment. If you require a printed version of a Home Report, you will need to pay a reasonable production charge reflecting printing and other costs. 6. We are not able to offer an opinion either written or verbal on the content of these reports and this must be obtained from your legal representative. 7. Whilst we take care in preparing these reports, a buyer should ensure that his/her legal representative confirms as soon as possible all matters relating to title including the extent and boundaries of the property and other important matters before exchange of contracts.

allen & harris



01454 318387



ChippingSodbury@allenandharris.co.uk



7 High Street, Chipping Sodbury, BRISTOL,
Avon, BS37 6BA



[allenandharris.co.uk](https://www.allenandharris.co.uk)