



Grace Close, Chipping Sodbury Bristol BS37 6NS



welcome to

Grace Close, Chipping Sodbury Bristol

- CUL-DE-SAC LOCATION
- NO ONWARD CHAIN
- TWO BEDROOM SEMI-DETACHED
- WESTERLY FACING GARDEN
- GARAGE & OFF STREET PARKING

Tenure: Freehold EPC Rating: C

£290,000

Entrance Hall

Double glazed door to front, radiator

Lounge

13' 11" x 9' 3" (4.24m x 2.82m)
Double glazed door and window to garden, coved ceiling, radiator, stairs to first floor

Kitchen

10' 9" x 8' 4" (3.28m x 2.54m)
Double glazed window to front bay, both wall and floor units with work surfaces over, tiled splashback, stainless steel sink and drainer, eye level double oven, gas hob, space for washing machine, wall mounted condensing boiler, fusebox, vinyl flooring

Landing

Double glazed window to side at bottom of staircase, loft access, pull down ladder

Bedroom One

13' 11" x 9' 3" (4.24m x 2.82m)
Double glazed window to rear, fitted wardrobes, coved ceiling, radiator, airing cupboard housing immersion tank and slatted shelves.

Bedroom Two

8' 5" x 7' 2" (2.57m x 2.18m)
Double glazed window to front, fitted cupboard, coved ceiling, radiator

Bathroom

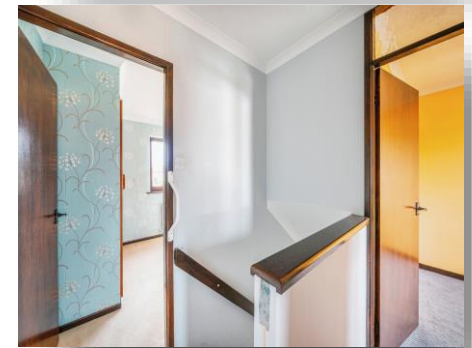
Double glazed window to front, bath with mixer taps over, shower screen, separate power shower over, wash hand basin, w/c, coved ceiling, radiator, vinyl flooring

Rear Garden

South-Westerly facing and fully enclosed by boundary fence with gated side access, patio area leading to lawn

Garage

16' 6" x 8' 3" (5.03m x 2.51m)
up and over door to front, light, power and workbench to rear.



view this property online allenandharris.co.uk/Property/CPS104674



Property Ref:
CPS104674 - 0003

1. MONEY LAUNDERING REGULATIONS Intending purchasers will be asked to produce identification documentation at a later stage and we would ask for your co-operation in order that there is no delay in agreeing the sale. 2. These particulars do not constitute part or all of an offer or contract. 3. The measurements indicated are supplied for guidance only and as such must be considered incorrect. Potential buyers are advised to recheck measurements before committing to any expense. 4. We have not tested any apparatus, equipment, fixtures or services and it is in the buyers interest to check the working condition of any appliances. 5. Where an EPC, or a Home Report (Scotland only) is held for this property, it is available for inspection at the branch by appointment. If you require a printed version of a Home Report, you will need to pay a reasonable production charge reflecting printing and other costs. 6. We are not able to offer an opinion either written or verbal on the content of these reports and this must be obtained from your legal representative. 7. Whilst we take care in preparing these reports, a buyer should ensure that his/her legal representative confirms as soon as possible all matters relating to title including the extent and boundaries of the property and other important matters before exchange of contracts.

Allen & Harris is a trading name of Sequence (UK) Limited which is registered in England and Wales under company number 4268443, Registered Office is Cumbria House, 16-20 Hockliffe Street, Leighton Buzzard, Bedfordshire, LU7 1GN. VAT Registration Number is 500 2481 05.


allen & harris



01454 318387



ChippingSodbury@allenandharris.co.uk



7 High Street, Chipping Sodbury, BRISTOL,
Avon, BS37 6BA



allenandharris.co.uk