



30, 30a and 30b Wade House Road
Shelf, Halifax, HX3 7PB

A rare opportunity with scope and scale



Charnock Bates

The Country, Period & Fine Home Specialist





30, 30a and 30b
Wade House Road
Shelf
Halifax
HX3 7PB

Offers over: £850,000

At a glance

- **Three residences with extensive accommodation: two semi-detached and one terrace**
- **Generous plot size of 1.4 acres – with gardens, field, and pond**
- **Array of stables, storehouses, garages, and outbuildings with scope for varied uses**
- **Expansive basements running beneath both semi-detached homes**
- **Solar panels with battery storage (30a and 30b)**
- **Established vegetable beds, greenhouse, and self-sufficiency potential**
- **Attractive gardens with mature apple tree and flagged seating area**
- **Superb development potential subject to planning**
- **Eight bedrooms in total (across three residences)**
- **AGA in 30A**

Charnock Bates





A rare opportunity with scope and scale



Set within a generous plot size of 1.4 acres, and offering 9,517.2 sq ft of internal space, 30, 30a, and 30b Wade House Road present an exciting opportunity for buyers seeking space, versatility, and outstanding development potential.

Currently comprising two substantial semi-detached homes, a terraced house, a range of outbuildings, stables, and farmland, the property offers a wealth of possibilities for those looking to create a private estate, pursue equestrian or agricultural interests, or explore future redevelopment (subject to planning consents).



30a and 30b external setting

Approached via a sweeping driveway, the property opens onto a large concrete forecourt, offering ample parking and access to both residences and the outbuildings. To the front, the homes are framed by railway sleeper flowerbeds and a flagged terrace – perfect for sitting out.

The gardens offer a self-sufficient lifestyle, with vegetable plots, a large glass greenhouse, a shed, and a pond where ducks are known to visit. Mature lawns, established shrubbery, and apple trees further enhance the setting. To the rear, further vegetable beds and reinforce the property's charm.

Outbuildings and equestrian facilities

- Stables with approximately four pens
- Lean-to and two hen huts
- Four storehouses, originally constructed as garages
- Additional single garage and potential for second driveway access

These facilities make the property particularly attractive for those with equestrian or smallholding ambitions.







Accommodation – 30a

Ground Floor

- **Porch**
Characterful stone walls.
- **Kitchen diner**
Triple aspect with views over the field. Bespoke oak cabinetry, tiled worksurfaces, red solid-fuel AGA, and an open fire.
- **Lounge**
Double doors, stone mullion windows, and wood burner set into a stone surround.
- **Principal bedroom**
With fitted cupboards, wardrobes, and vanity desk. Ensuite bathroom with toilet, sink, and bath..
- **Two further double bedrooms**
Overlooking flowerbeds and vegetable plots.
- **Family bathroom**
Traditional-style toilet and sink, with shower and heated towel rail.

Basement

Expansive basement space of 3,744 sq ft, with multiple rooms and solar battery installation.

Garaging

Two single garages serve the property.







Accommodation – 30b

Ground Floor

- **Porch**
Characterful stone walls.
- **Hallway**
Timber floors. Secure storage room with steel door.
- **Kitchen diner**
Bespoke oak cabinetry, tiled worksurfaces, and a cooker. Views across the front gardens.
- **Lounge**
Stone mullion windows and multi-fuel fire in a striking stone chimney breast.
- **Bedrooms**
Three well-proportioned doubles with views over lawns, flowerbeds, and vegetable plots.
- **Utility room**
Practical space with sink, linen cupboard, and laundry facilities.
- **Family bathroom**
Traditional Heritage suite with bath, shower, and heated towel rail.

Basement

Extending beneath both houses with multiple rooms offering excellent storage or further potential.







Accommodation – 30

A charming terraced home of 967 sq ft, 30 Wade House Road is included as part of this exceptional package. Currently let, it provides a flexible investment opportunity for the new owner, whether to continue renting, re-let, or eventually incorporate into the wider estate.

The accommodation is practical and well-proportioned, comprising an entrance vestibule, lounge, kitchen diner, dining room, rear lobby, cloakroom, two bedrooms, and a bathroom.



Development potential

The combined scale of the site, with three homes, extensive gardens, farmland, stables, and multiple outbuildings, offers a unique opportunity for development or reconfiguration. Buyers may wish to create a single grand residence from the two semi-detached properties, pursue multi-generational living, enhance the equestrian facilities, or explore residential redevelopment options, subject to planning consent.



Key information

- **Fixtures and fittings:**

Only fixtures and fittings mentioned in the sales particulars are included in the sale.

- **Wayleaves, easements and rights of way:**

The sale is subject to all of these rights whether public or private, whether mentioned in these particulars or not.

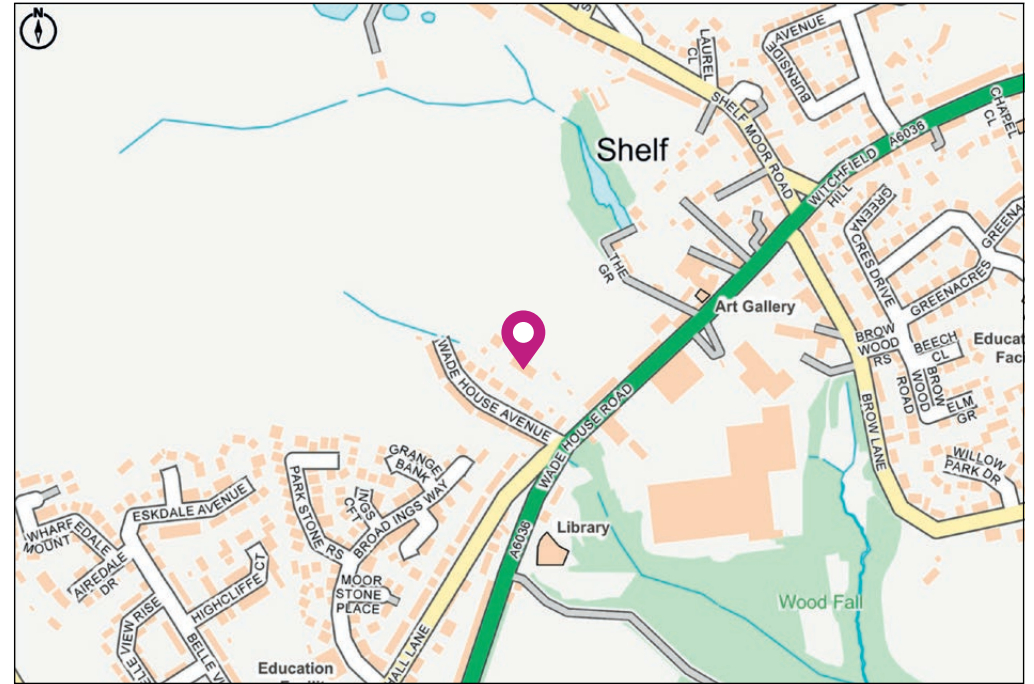
TENURE	Freehold
CONSTRUCTION	Stone built (all), slate roof (30)
PROPERTY TYPE	Two semi-detached bungalows, and one terraced house
PARKING	On-street parking (30), two single garages and ample driveway parking (30a and 30b)
LOCAL AUTHORITY	Calderdale MBC
COUNCIL TAX	Bands B (30), and E (30a and 30b)
ELECTRICITY SUPPLY	Connected to mains (all)
GAS SUPPLY	Connected to mains (30), not connected (30a and 30b)
WATER SUPPLY	Yorkshire Water (30), Borehole (30a and 30b)
SEWERAGE	Yorkshire Water (all)
HEATING	Central heating (30), solar panels and wood burner/open fire (30a and 30b)
BROADBAND	Connected to mains (all)
MOBILE SIGNAL	Good outdoor (Ofcom Mobile Checker)

Location

Situated in the sought-after village of Shelf, the property enjoys a semi-rural setting while remaining well-connected. Local amenities, schools, and transport links to Halifax, Bradford, and Leeds are within easy reach, making it an appealing base for both families and professionals.

30, 30a, and 30b Wade House Road represent a once-in-a-lifetime purchase. Offering space in abundance, development potential, and a lifestyle that embraces both self-sufficiency and community, this is a property with endless possibilities.

Viewing is highly recommended to appreciate the scale and scope on offer.



Get in touch to arrange your private tour today.

Charnock Bates



Property House
Lister Lane
Halifax HX1 5AS
01422 380100

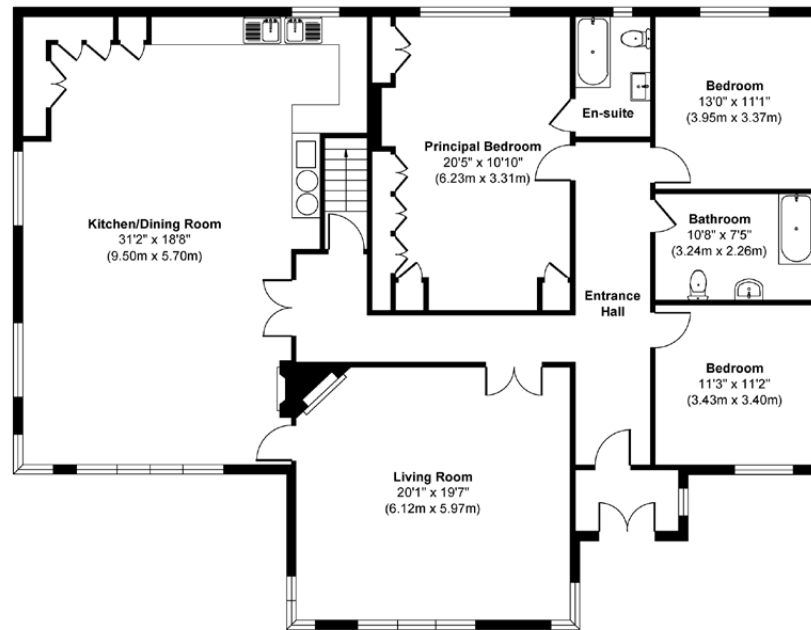
250 Halifax Road
Ripponden
HX6 4BG
01422 823777

charnockbates.co.uk
homes@charnockbates.co.uk

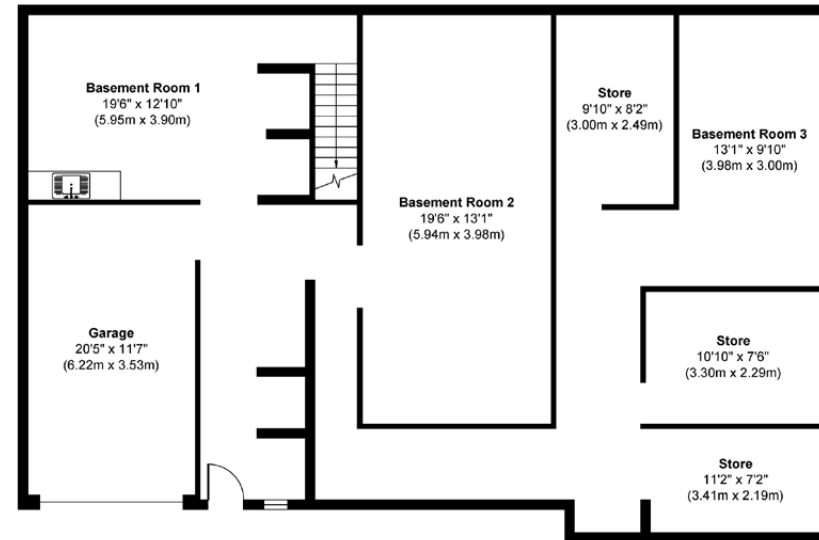


Floor plans – 30a

Ground floor



Basement



Charnock Bates

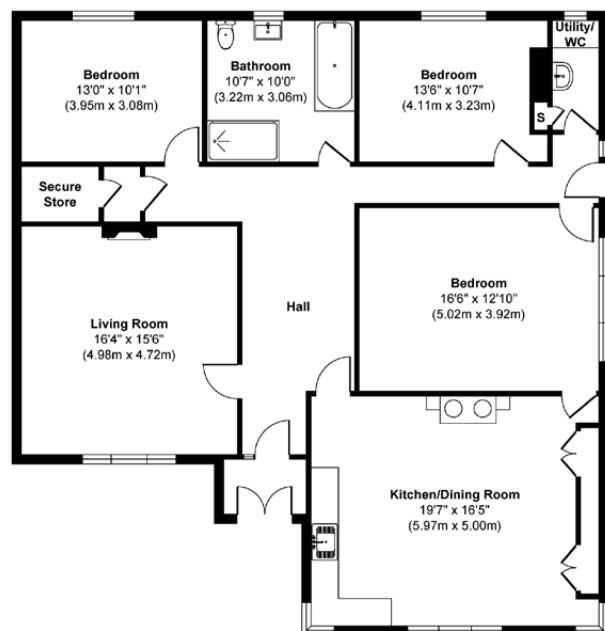


Total approximate floor area:
8550.00 sqft (794.64m²)
(Both properties inc Garages and Outbuildings)

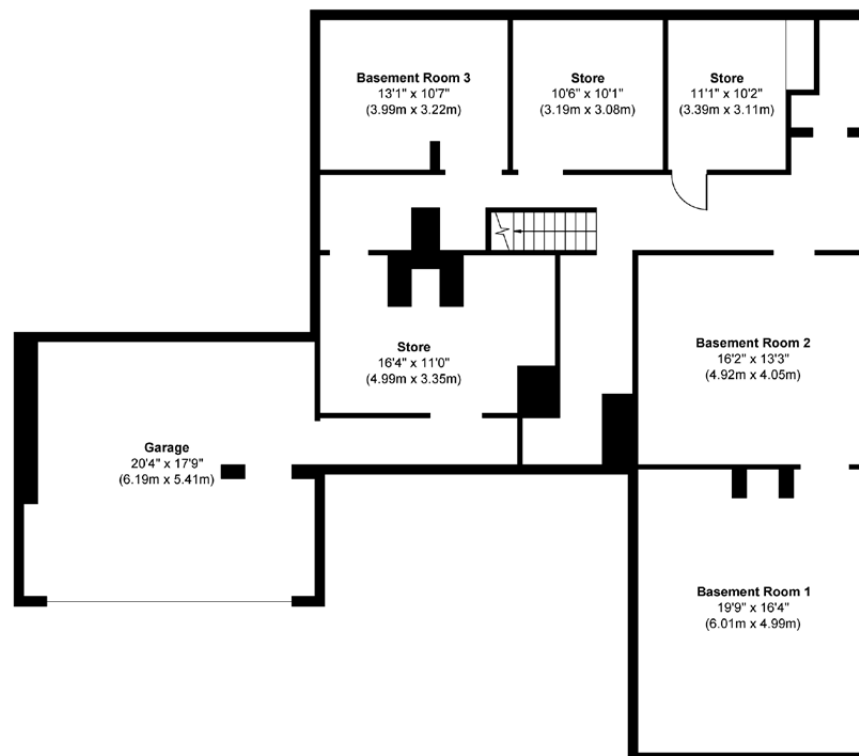
Please note: All measurements are approximate and for general guidance only and whilst every attempt has been made to ensure accuracy, they must not be relied on. Internal photographs are reproduced for general information and it must not be inferred that any item shown is included with the property.

Floor plans – 30b

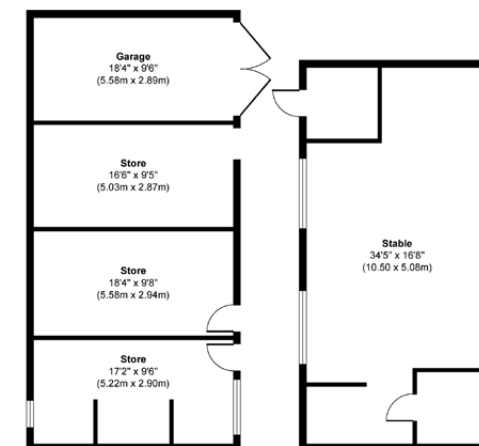
Ground floor



Basement



Outbuildings



Charnock Bates



Total approximate floor area:
8550.00 sqft (794.64m²)
 (Both properties inc Garages and Outbuildings)

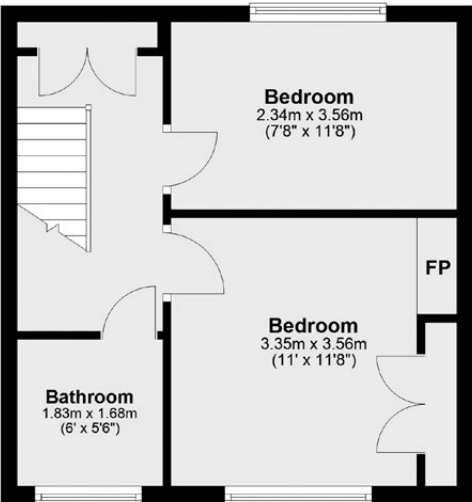
Please note: All measurements are approximate and for general guidance only and whilst every attempt has been made to ensure accuracy, they must not be relied on. Internal photographs are reproduced for general information and it must not be inferred that any item shown is included with the property.

Floor plans – 30

Ground floor



First floor





Charnock Bates

The Country, Period & Fine Home Specialist

Property House
Lister Lane
Halifax HX1 5AS
01422 380100

250 Halifax Road
Ripponden
HX6 4BG
01422 823777

charnockbates.co.uk

homes@charnockbates.co.uk

rightmove.co.uk

