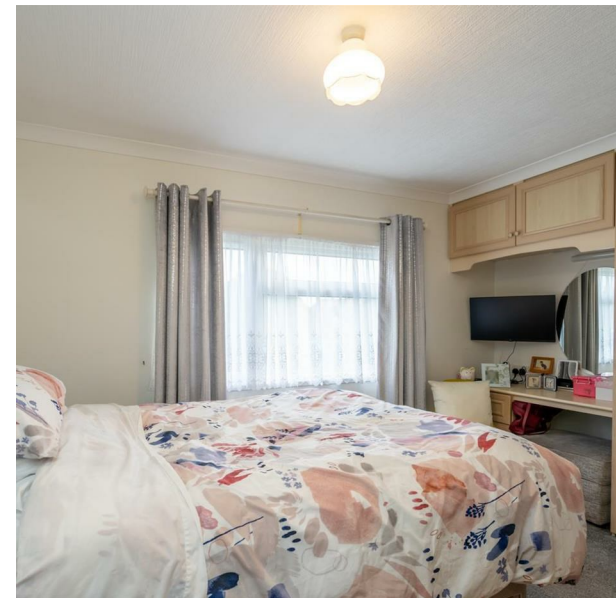


29 Conifer Way, Nyetimber, Bognor Regis, West Sussex, PO21 3NQ

£200,000

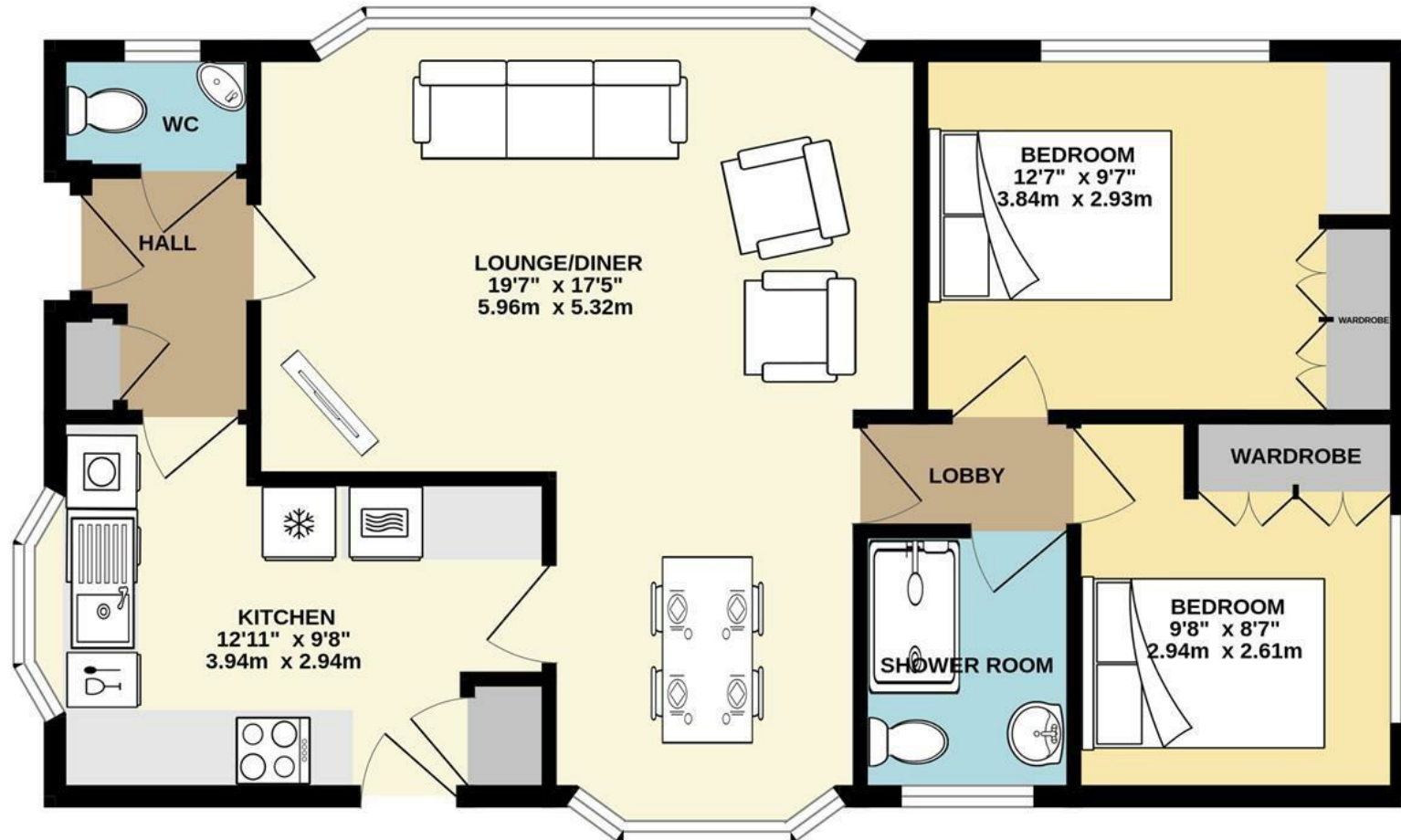
Park Home

FARNDELL
ESTATE AGENTS



GROUND FLOOR

708 sq.ft. (65.8 sq.m.) approx.



TOTAL FLOOR AREA : 708 sq.ft. (65.8 sq.m.) approx.

Whilst every attempt has been made to ensure the accuracy of the floorplan contained here, measurements of doors, windows, rooms and any other items are approximate and no responsibility is taken for any error, omission or mis-statement. This plan is for illustrative purposes only and should be used as such by any prospective purchaser. The services, systems and appliances shown have not been tested and no guarantee as to their operability or efficiency can be given.

Made with Metropix ©2026



- Park Home on the ever-popular Mill Farm
- Homeseeker Quantock 36' x 20' sited in 2000
- Large Lounge/Diner
- Modern Kitchen
- 2 Bedrooms
- Shower Room and separate WC
- uPVC Double Glazing and Gas Central Heating
- Larger than average Garden
- Tandem Driveway
- Desirable Position within the Development

The Following information has been provided by the seller. We would ask you to get verify this information during the course of your purchase:

SITE FEES for 1st November 2025 to 31st October 2026 are £3,215.43 per year

Please Note – The development is restricted to 40 years of age and above.

ELECTRICITY AND WATER ARE METERED BY THE SITE AND CHARGED QUARTERLY.

COUNCIL TAX BAND A

Arun District Council, Arun Civic Centre,
Maltravers Road, Littlehampton,
West Sussex, BN17 5LF
Tel: 01903 737500



FARNDELL

ESTATE AGENTS

79 Aldwick Road

Bognor Regis

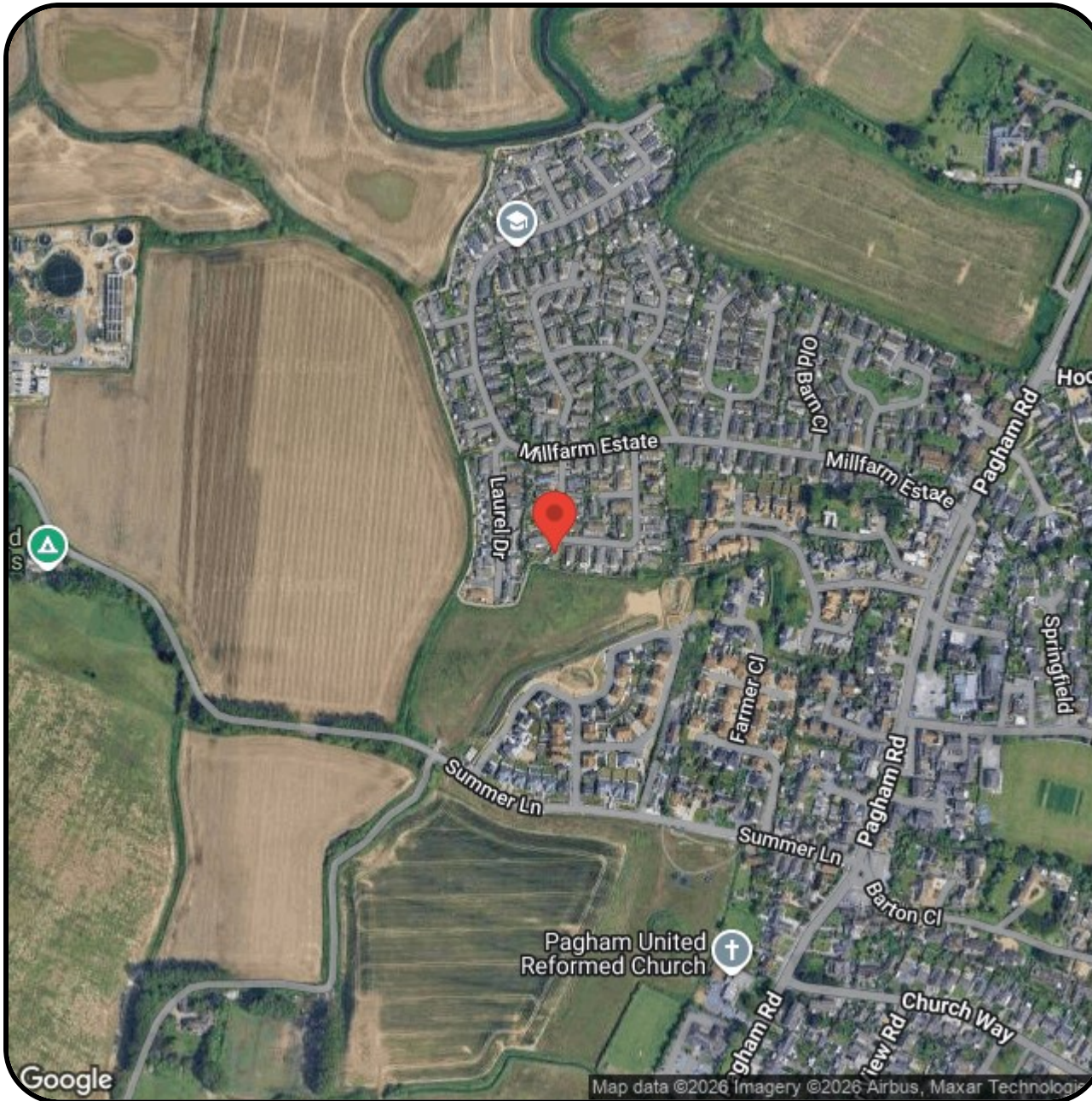
West Sussex

PO21 2NW

01243 869991

sales@farndells.com

<http://www.farndells.com>



Council Tax Band A