

7 Millview Close, Nyetimber, Bognor Regis, West Sussex, PO21 3UF

£180,000

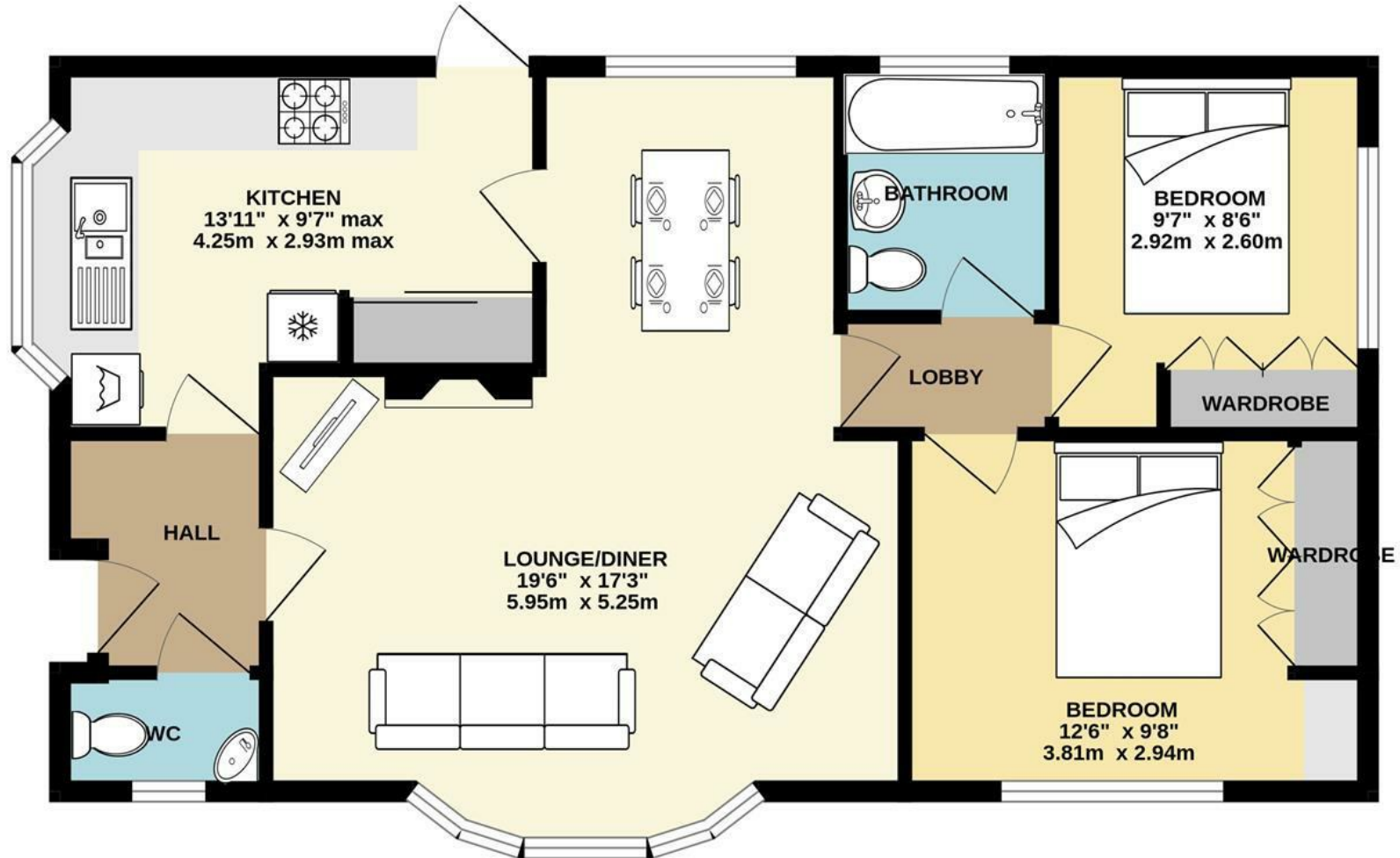
Park Home

FARNDELL
ESTATE AGENTS



GROUND FLOOR

700 sq.ft. (65.0 sq.m.) approx.



TOTAL FLOOR AREA : 700 sq.ft. (65.0 sq.m.) approx.

Whilst every attempt has been made to ensure the accuracy of the floorplan contained here, measurements of doors, windows, rooms and any other items are approximate and no responsibility is taken for any error, omission or mis-statement. This plan is for illustrative purposes only and should be used as such by any prospective purchaser. The services, systems and appliances shown have not been tested and no guarantee as to their operability or efficiency can be given.
Made with Metropix ©2024



- Park home on the ever-popular Mill Farm
- Homeseeker Quantock 36' x 20' Sited in 1997
- Open-Plan Lounge/Diner
- Kitchen
- 2 Double Bedrooms
- Bathroom and Cloakroom
- Surrounded by Garden
- Allocated Parking
- uPVC Double Glazing and Gas Central Heating
- No Forward Chain

SITE FEES for 1st November 2024 to 31st October 2025 are £3,097.72 per year

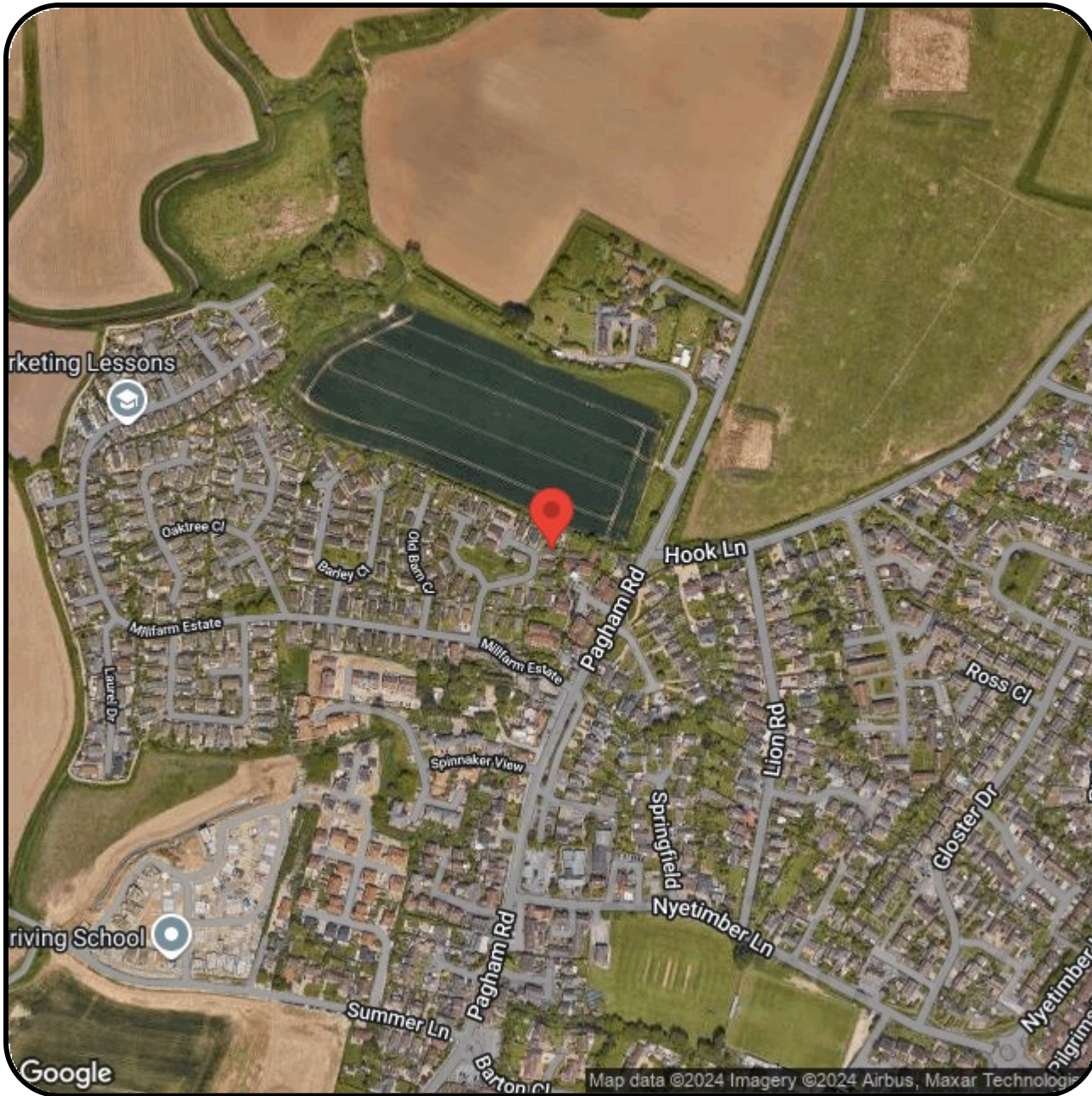
Please Note – The development is restricted to 40 years of age and above.

ELECTRICITY AND WATER ARE METERED BY THE SITE AND CHARGED QUARTERLY.

COUNCIL TAX BAND A

Arun District Council, Arun Civic Centre,
Maltravers Road, Littlehampton,
West Sussex, BN17 5LF





FARNDSELL

ESTATE AGENTS

79 Aldwick Road

Bognor Regis

West Sussex

PO21 2NW

01243 869991

sales@fardells.com

<http://www.fardells.com>

Council Tax Band A