

34 Honeysuckle Drive, Nyetimber, Bognor Regis, West Sussex, PO21 3PT

£235,000

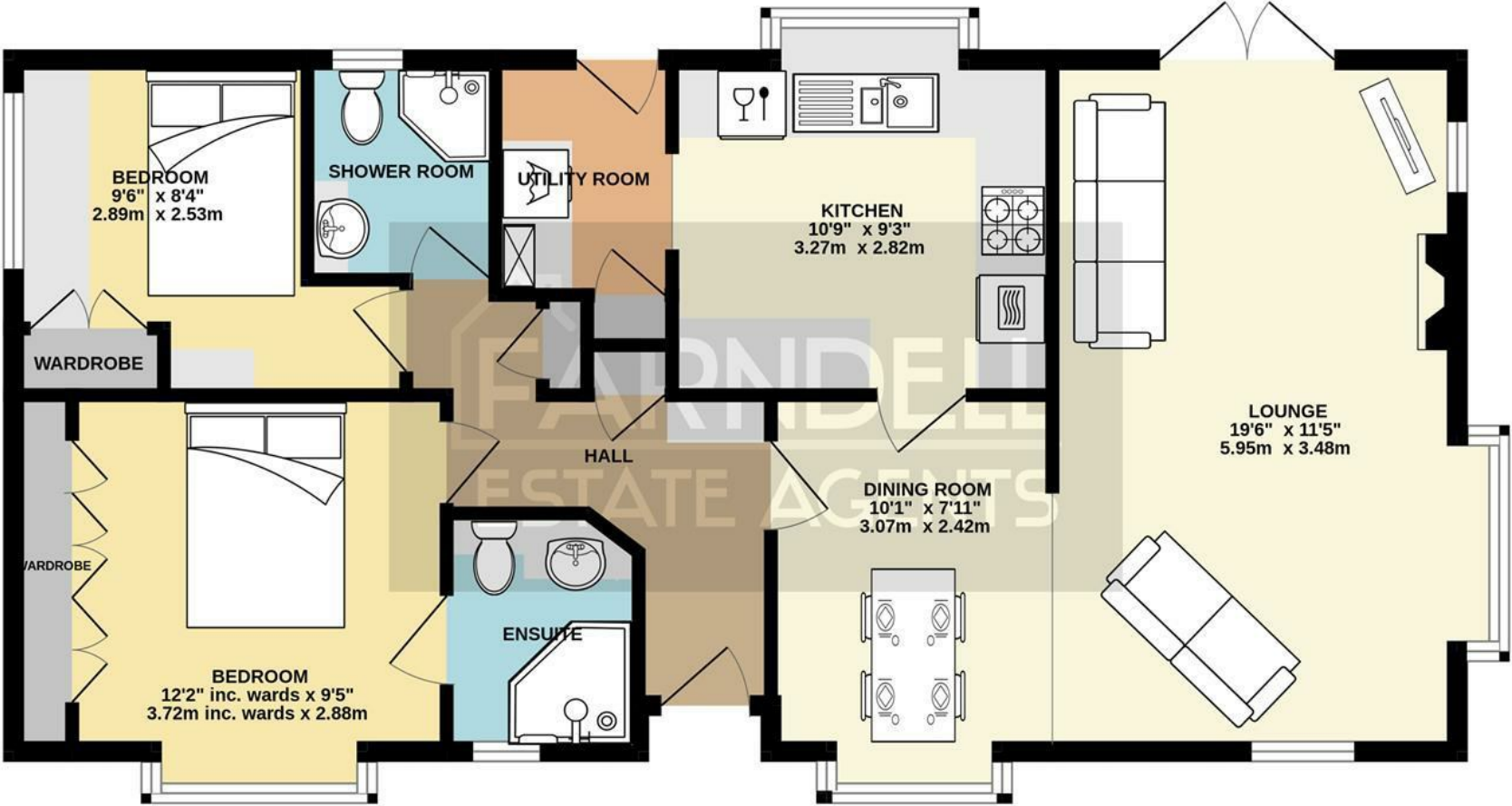
Park Home

FARNDSELL
ESTATE AGENTS



GROUND FLOOR

815 sq.ft. (75.7 sq.m.) approx.



TOTAL FLOOR AREA : 815 sq.ft. (75.7 sq.m.) approx.

Whilst every attempt has been made to ensure the accuracy of the floorplan contained here, measurements of doors, windows, rooms and any other items are approximate and no responsibility is taken for any error, omission or mis-statement. This plan is for illustrative purposes only and should be used as such by any prospective purchaser. The services, systems and appliances shown have not been tested and no guarantee as to their operability or efficiency can be given.
Made with Metropix ©2024



- Park Home on the Ever-Popular Mill Farm Site
- Lissett Linden Cottage 42' x 20' sited in 2003
- Large Lounge/Diner
- Modern Kitchen and Utility Room
- 2 Double Bedrooms with Built-In Wardrobes
- Shower Room and Ensuite
- uPVC Double Glazing and Gas Central Heating
- No Forward Chain
- Low Maintenance Garden
- Allocated Parking

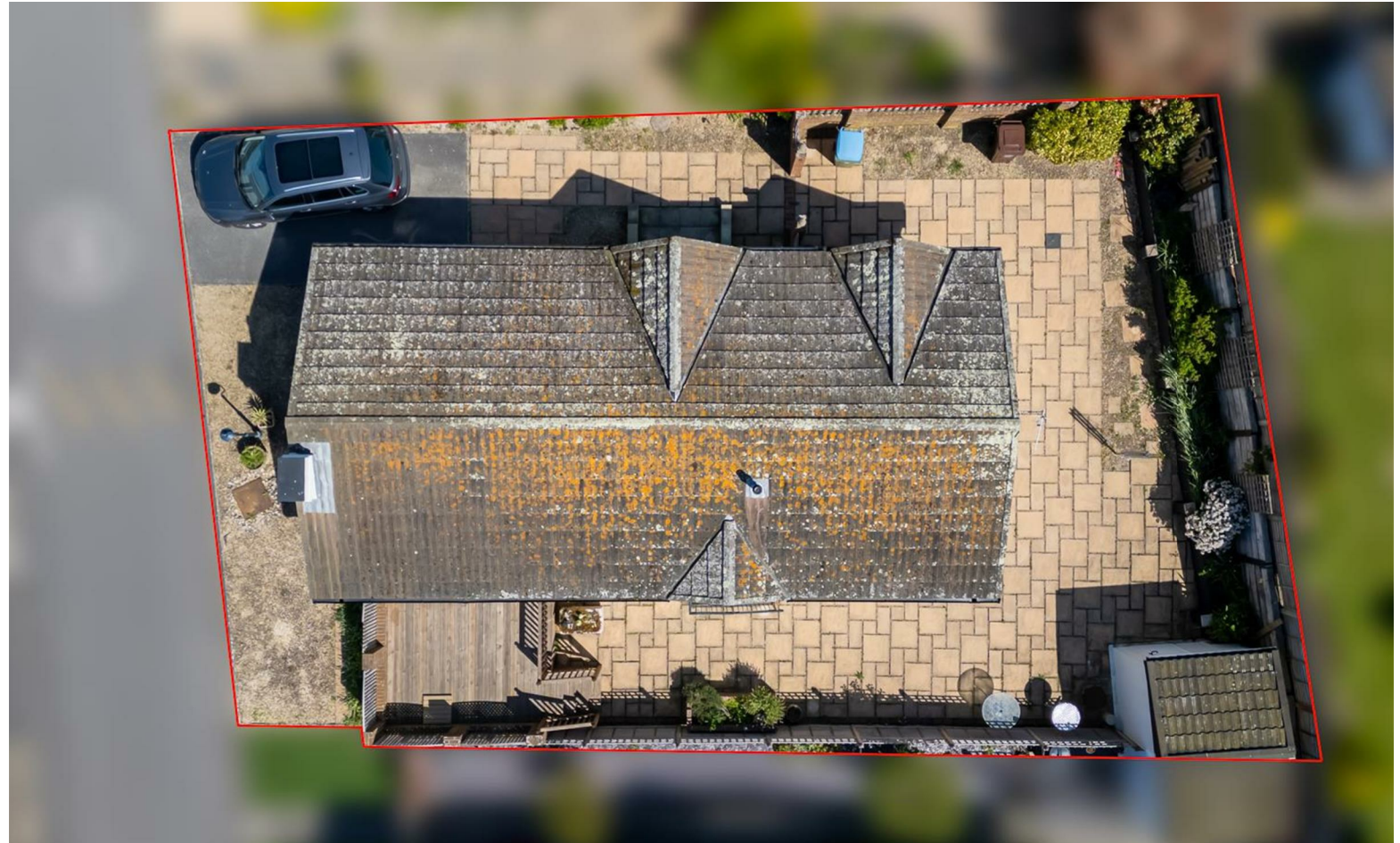
SITE FEES for 1st November 2023 to 31st October 2024 are £3,031.04 per year

Please Note – The development is restricted to 40 years of age and above.

ELECTRICITY AND WATER ARE METERED BY THE SITE AND CHARGED QUARTERLY.

COUNCIL TAX BAND A

Arun District Council, Arun Civic Centre,
Maltravers Road, Littlehampton,
West Sussex, BN17 5LF
Tel: 01903 737500



FARNDSELL

ESTATE AGENTS

79 Aldwick Road

Bognor Regis

West Sussex

PO21 2NW

01243 869991

sales@farndells.com

<http://www.farndells.com>



Council Tax Band A