

77 Westminster Drive, Aldwick Park, Bognor Regis, West Sussex, PO21 3RE

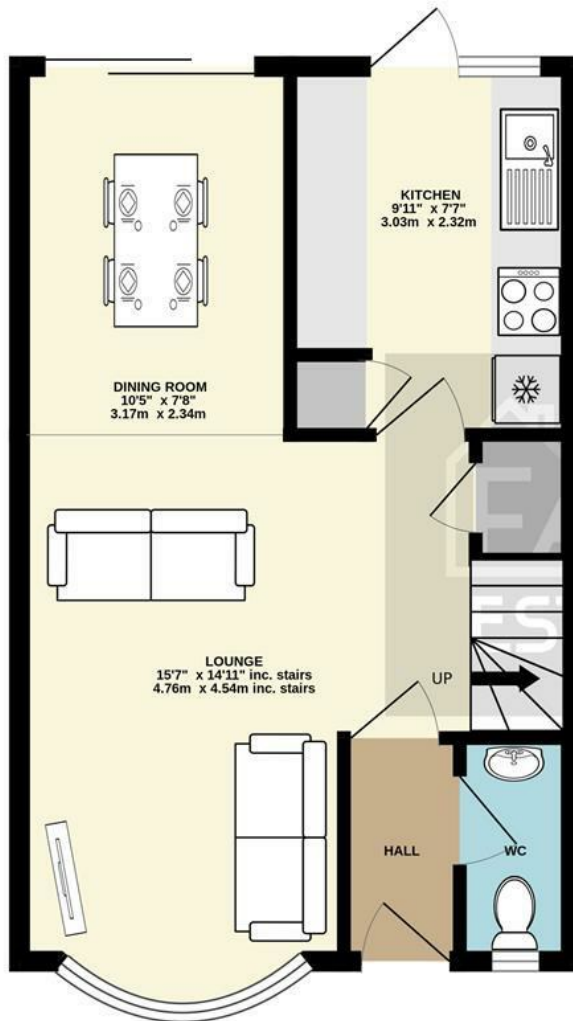
£315,000

Freehold

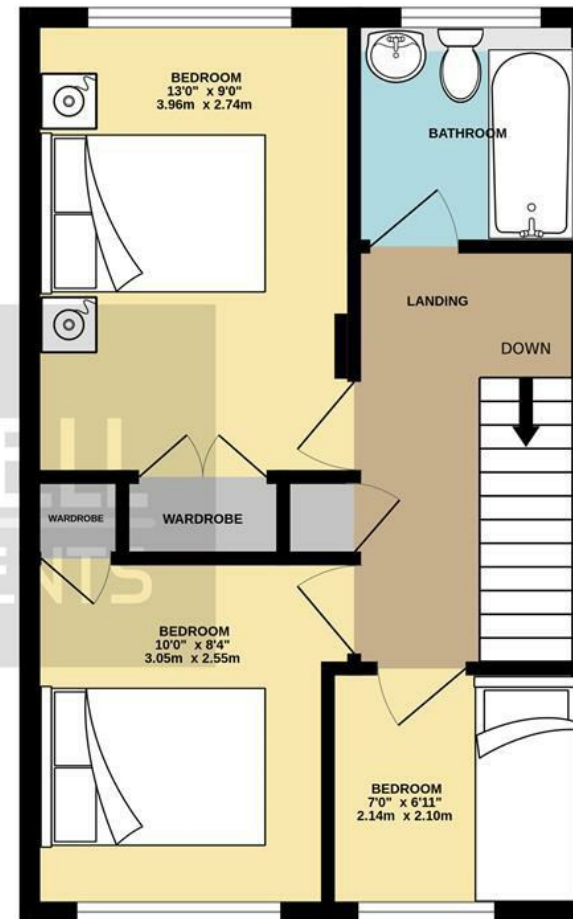
FARNDSELL
ESTATE AGENTS



GROUND FLOOR
402 sq.ft. (37.3 sq.m.) approx.



1ST FLOOR
395 sq.ft. (36.7 sq.m.) approx.



TOTAL FLOOR AREA : 797 sq.ft. (74.0 sq.m.) approx.

Whilst every attempt has been made to ensure the accuracy of the floorplan contained here, measurements of doors, windows, rooms and any other items are approximate and no responsibility is taken for any error, omission or mis-statement. This plan is for illustrative purposes only and should be used as such by any prospective purchaser. The services, systems and appliances shown have not been tested and no guarantee as to their operability or efficiency can be given.
Made with Metropix ©2024



- Well-Presented End Terrace Family House
- Light and Airy Lounge/Diner
- Modern Kitchen
- 3 Bedrooms
- Family Bathroom and Ground Floor Cloakroom
- uPVC Double Glazing and Gas Central Heating
- Front and Rear Gardens
- Garage in Compound to Rear
- No Forward Chain
- Conveniently Situated within 400 Yards of Local Shops

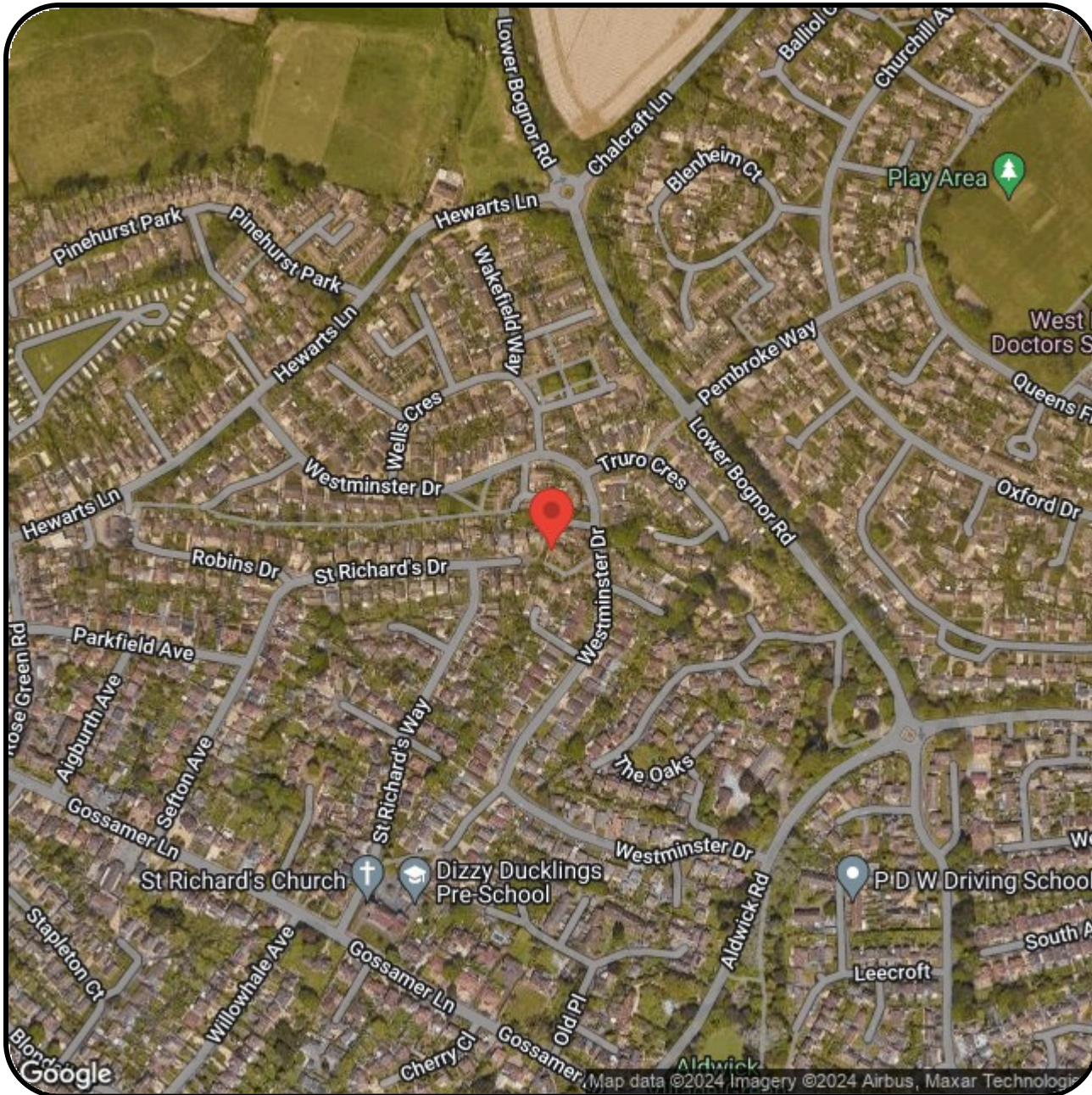


The Following information has been provided by the seller. We Would advise that you ask your solicitor to verify this information during the course of your purchase:

COUNCIL TAX BAND C

LOCAL AUTHORITY
 Arun District Council, Arun Civic Centre,
 Maltravers Road, Littlehampton,
 West Sussex, BN17 5LF
 Tel: 01903 737500





FARDELL

ESTATE AGENTS

79 Aldwick Road

Bognor Regis

West Sussex

PO21 2NW

01243 869991

sales@fardells.com

<http://www.fardells.com>

Energy Efficiency Rating

	Current	Potential
Very energy efficient - lower running costs		
(92 plus) A		
(81-91) B		88
(69-80) C	74	
(55-68) D		
(39-54) E		
(21-38) F		
(1-20) G		
Not energy efficient - higher running costs		

England & Wales

EU Directive
2002/91/EC



Council Tax Band C