



## Willow Road, Yeovil

A semi detached bungalow nestling in this quiet residential area offering 3 bedrooms, shower room, sitting room, garden room, garden and parking.

Guide Price  
**£260,000**  
Freehold

**Symonds  
& Sampson**

ESTABLISHED 1858



## Willow Road, Yeovil, BA21 3AW

- Semi Detached Bungalow
  - 3 Bedrooms
  - Sitting Room
    - Kitchen
  - Shower Room
  - Garden Room
- Front & Rear Gardens
  - Off Road Parking
  - Fully Rewired
  - No Onward Chain

Viewing strictly by appointment  
Symonds & Sampson  
01935 423526







A semi-detached bungalow located in a quiet residential area with accommodation comprising an entrance hall, sitting room, kitchen, inner hall, 3 bedrooms, shower room and garden room. Benefits include gas-fired central heating, double-glazed windows and recently fully rewired.

#### Situation

Yeovil offers a wide range of excellent shopping, business and cultural facilities; there are many supermarkets, and schools from primary through to secondary and Yeovil College within easy reach. Regular bus services run within the town also serving nearby villages and neighbouring towns. A mainline railway station will be found at Yeovil Junction, good road links to the A30, A303 and A37 are all close by. The M5 junction 25 is approximately 20 miles away and the South Coast is approximately 25 miles.

#### Directions

What3words: ///facing.laying.brain

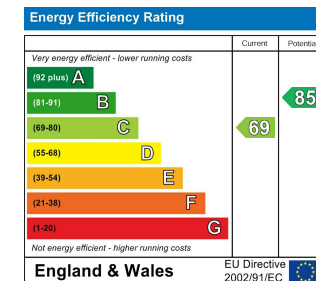
From the Yeovil Hospital (Kingston) roundabout proceed in a northerly direction and at the next roundabout take the first exit onto Preston Road, continue for a few hundred yards passing through the first set of traffic lights and turn right into Willow Road where the property will be found on your left hand side indicated by one of our for sale boards.

#### Services

All main services are connected. Gas-fired central heating via radiators. Double glazed and recently rewired.

Broadband - Ultrafast broadband is available. Mobile signal/coverage - Available both indoors and outside - For an indication of specific speeds and supply or coverage in the area we recommend Ofcom checker.

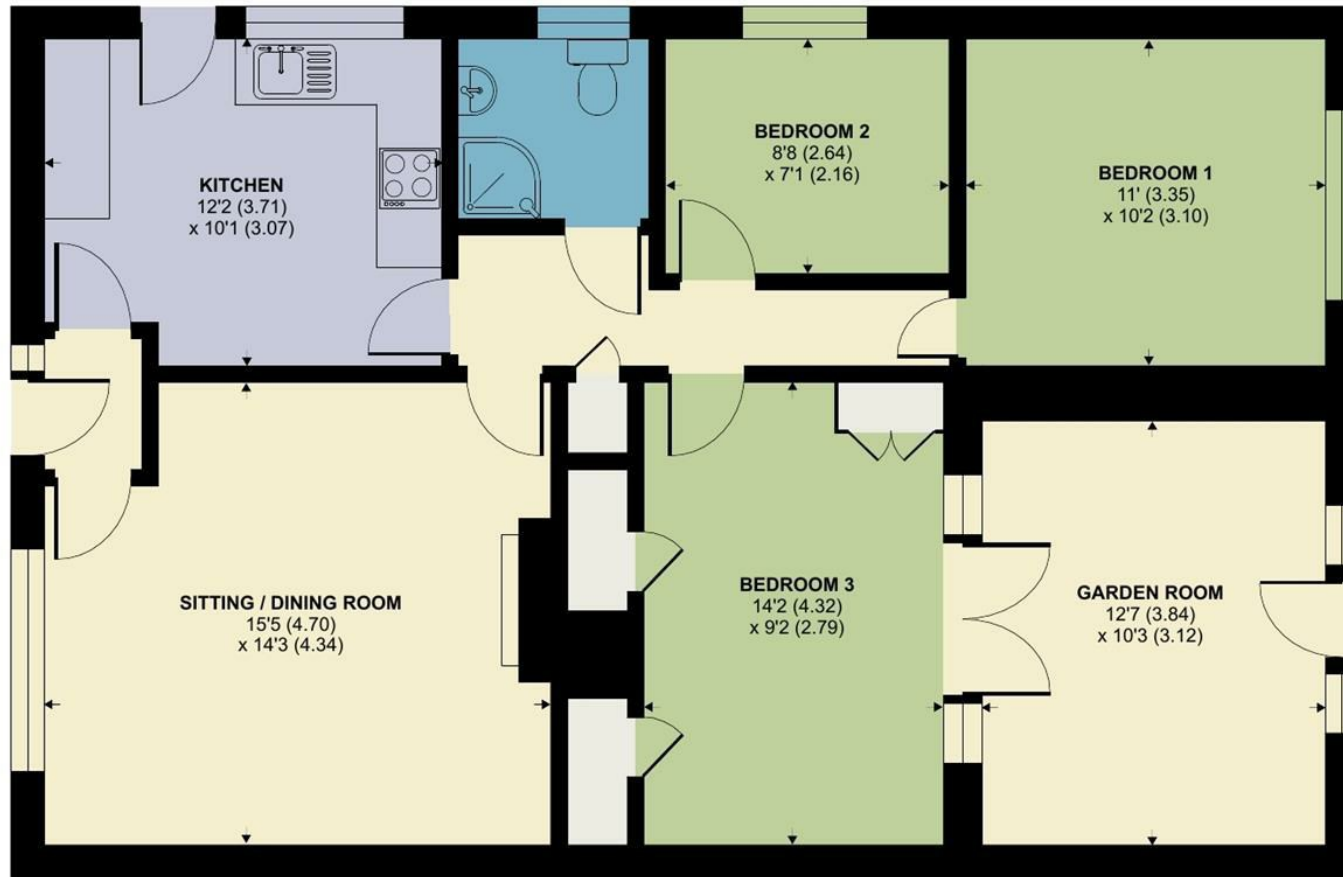
<https://checker.ofcom.org.uk/en-gb/broadband-coverage>



# Willow Road, Yeovil

Approximate Area = 966 sq ft / 89.7 sq m

For identification only - Not to scale



GROUND FLOOR

YEO/SH/17.04.2024



Floor plan produced in accordance with RICS Property Measurement Standards incorporating International Property Measurement Standards (IPMS2 Residential). © nichecom 2024. Produced for Symonds & Sampson. REF: 1112670



01935 423526

Symonds & Sampson 2 Court Ash

Yeovil

Somerset

BA20 1HG

yeovil@symondsandsampson.co.uk

IMPORTANT NOTICE: Symonds & Sampson LLP and their Clients give notice that:

1. They have no authority to make or give any representations or warranties in relation to the property. These particulars do not form part of any offer or contract and must not be relied upon as statements or representations of fact. 2. Any areas, measurements or distances are approximate. The text, photographs and plans are for guidance only and are not necessarily comprehensive. It should not be assumed that the property has all necessary Planning, Building Regulation or other consents, and Symonds & Sampson have not tested any services, equipment, or facilities.

