

Barns & Buildings at Great House Farm

Stour Row, Shaftesbury, Dorset

Barns & Buildings at Great House Farm

Stour Row
Shaftesbury
Dorset SP7 0QQ

A fantastic development opportunity with full planning permission for the conversion of 4 barns and 1 new build on the southern edge of this highly sought after village, with fantastic views over the surrounding hills and countryside.

- Development opportunity in stunning location
 - 4 barn conversions, 1 new build
 - Edge of village location
- Super views over surrounding countryside
- Additional land could be available separately
- Shaftesbury 3 miles, Sturminster Newton 5 miles
- Easy access to road networks and Gillingham station

Offers In Excess Of **£1,000,000**
Freehold

Sturminster Sales
01258 473766
sturminster@symondsandsampson.co.uk



SITUATION

Great House Farm is situated on the southern side of the village and is reached from Dover Street via a long access road. The buildings currently comprise a mix of older traditional brick and Marnhull stone barns and a range of modern portal frame buildings around a traditional farmyard. The views to the north are over open fields and to Dunctliffe Wood while the panoramic views to the south incorporate Melbury Beacon, Compton Abbas, Hambledon Hill and Bulbarrow and the surrounding countryside in the distance.

Stour Row is a desirable village situated about 5 miles from Sturminster Newton and 3 miles south of the Saxon hilltop Town of Shaftesbury. Shaftesbury, made famous by its cobbled street Gold Hill is a popular town offering a good range of high street and boutique shops, supermarkets, secondary schooling and recreational facilities. Further east is the cathedral city of Salisbury offering the usual facilities and opportunities of a regional centre.

The property has the benefit of a rural position combined with good access to the A30 and a mainline station at Gillingham (6 miles). There is an excellent network of footpaths and bridleways to the surrounding countryside and Dunctliffe Hill which provides breath-taking views over the Blackmore Vale. There are excellent junior, secondary and independent schools in the area.

PLANNING PERMISSION

Planning Permission was granted by Dorset Council on 17th April 2025 - Application number P/FUL/2025/00917 - for the demolition of agricultural buildings, change of use and conversion of 4 buildings to form 4 dwellings. Erect 1 dwelling, form new access and carry out associated works. For full information please refer to Dorset's planning portal using the above reference number.

SCHEDULE OF ACCOMMODATION

- Plot 1, detached single storey 2 bed conversion of 828 sq ft (77 m²) with parking for 3 cars.
- Plot 2, semi detached single storey 3 bed conversion of 1302 sq ft (121 m²) with parking for 3 cars and a visitors parking space.
- Plot 3, semi detached single storey 3 bed conversion of 1302 sq ft (121 m²) with parking for 3 cars and a visitors parking space.
- Plot 4, detached split level 3 bed conversion of 1011 sq ft (94 m²) with parking for 3 cars and a visitors parking space.
- Plot 5, detached two storey new build of 1646 sq ft (153 m²) with parking for 3 cars and a visitors parking space.
- Total 6092 sq ft (566 m²)

DIRECTIONS

From Shaftesbury head west on the A30 towards Sherborne turning left towards Stour Row opposite the Kings Arms. Follow the road for about 1.5 miles until the junction with Dover Street where the entrance to Great House Farm will be found directly opposite.

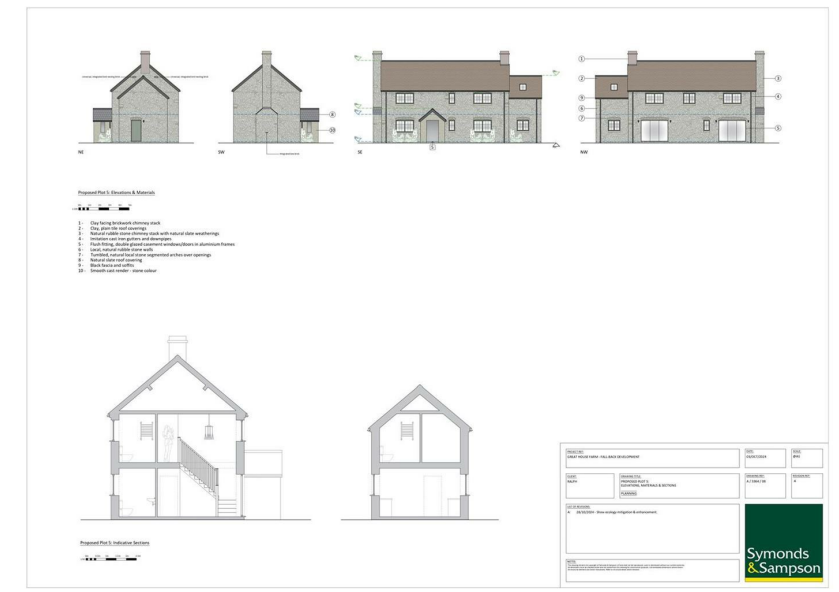
what3words:///racked.ignoring.pigtails

SERVICES

Mains water is nearby in Dover Street and mains electricity is on the site. A treatment plant will need to be installed.

Local Authority - Dorset Council - 01305 221000





RICS
Regulated by RICS

naea | **propertymark**

PROTECTED

www.
the
londonoffice.co.uk

40 ST JAMES'S PLACE SW1

sturminster@symondsandsampson.co.uk
Symonds & Sampson LLP
Agriculture House, Market Place,
Sturminster Newton, Dorset DT10 1AR



Symonds
& Sampson

Important Notice: Symonds & Sampson LLP and their Clients give notice that: 1. They have no authority to make or give any representations or warranties in relation to the property. These particulars do not form part of any offer or contract and must not be relied upon as statements or representations of fact. 2. Any areas, measurements or distances are approximate. The text, photographs and plans are for guidance only and are not necessarily comprehensive. It should not be assumed that the properties have all necessary planning, building regulation or other consents and Symonds and Sampson LLP have not tested any services, equipment of facilities. 3. We have not made any investigation into the existence or otherwise of any issues concerning pollution of the land, air or water contamination and the purchaser is responsible for making his/her own enquiries in this regard. 4. The property is sold subject to and with the benefit of all existing wayleaves, easements and rights of way whether public or private, specifically mentioned or not. The vendors shall not be required to define any such rights, privileges or advantages.