



## Plot 7

Plumber Farm, Plumber, Sturminster Newton, Dorset



# Plot 7

Plumber Farm  
Plumber  
Sturminster Newton  
Dorset DT10 2AG

A beautifully converted 4 bedroom upside down house with stunning first floor kitchen / living room making the most of the wonderful views.



- Stunning living / sitting room with Juliet balconies
  - Underfloor heating via Air Source Heat Pump
- Engineered oak floors, Bosch & Neff fitted appliances
  - Master bedroom with ensuite shower room
    - Fine far-reaching views
  - Lovely countryside yet close to Sturminster
    - 10 year warranty
    - No onward chain

Guide Price £550,000

Freehold

Sturminster Sales  
01258 473766  
[sturminster@symondsandsampson.co.uk](mailto:sturminster@symondsandsampson.co.uk)



## THE DWELLING

Plumber Farm is a beautiful development of 9 individual barns all converted to an exceptionally high standard around a traditional courtyard.

Number 7 is an upside-down house built of brick under a slate roof and combines traditional character with contemporary open plan living. The accommodation is accessed via a bespoke timber pivot door into an entrance hall with engineered oak floor and access to four double bedrooms and a family bathroom. Bedroom one has an ensuite shower room and French doors lead to the rear garden. Bathrooms are by Bathroom Elegance.

Stairs rise to the superb open plan kitchen / dining / living room with engineered oak floor. This stunning bespoke kitchen by New Image of Weymouth has an excellent range of wall mounted and floor-standing units with granite worksurfaces.

Fitted Bosch and Neff appliances include dishwasher, induction hob, oven/microwave and washing machine, Montpelier American fridge/freezer, and there is 1.5 bowl sink with swan neck tap.

The kitchen opens into a superb family sitting / living room with a triple aspect, traditional joinery and beams, French doors and bi-fold doors opening to a Juliet balcony and there are beautiful far-reaching views over the surrounding countryside.

## ACCOMMODATION

Please see floorplan: Kitchen/sitting room, four bedrooms and two bathrooms, one ensuite.

## OUTSIDE

The property is approached from the road via a drive with Plumber Farm having a vehicular right of way. The communal courtyard is beautifully landscaped with stone, individual lawned areas planting.

There is a garage and two parking spaces to the rear. A pedestrian gate leads to the enclosed rear garden which is laid to lawn with a terrace.

## SITUATION

Plumber is a hamlet in the renowned Blackmore Vale, in Thomas Hardy's 'Vale of the little dairies' found in a good location within easy striking distance of a number of small towns. Sturminster Newton about 1.5 miles has a range of shops and services including primary and senior schools while Stalbridge, about 4 miles, has an award-winning supermarket, butcher, dentist, library and primary school. There are many well renowned private schools in the area.

Plumber Manor, a fine Jacobean country house which has been in the same family ownership since it was built, is a luxury Dorset country hotel and situated just across the road. The larger towns of Blandford Forum, Shaftesbury and Sherborne are within easy reach by road and Gillingham has a main line station to London Waterloo (approximately 2 hours).

There is a terrific network of bridleways and footpaths with excellent walking and riding a short distance from the property.

## DIRECTIONS

What3words///pulp.costs.solicitor

## SERVICES

Mains water and electricity are connected to the property. Shared treatment plant drainage system, air source heat pump.

## MATERIAL INFORMATION

Standard and ultrafast broadband is available.

Mobile phone network coverage is available inside and outside – (coverage is best provided by O2 and Vodaphone Networks)

(Information from Ofcom <https://www.ofcom.org.uk>)

Council Tax Band: tbc

Restrictive Covenants: Yes - no caravans

Agent's Note - Joint Sole Agents with Morton New

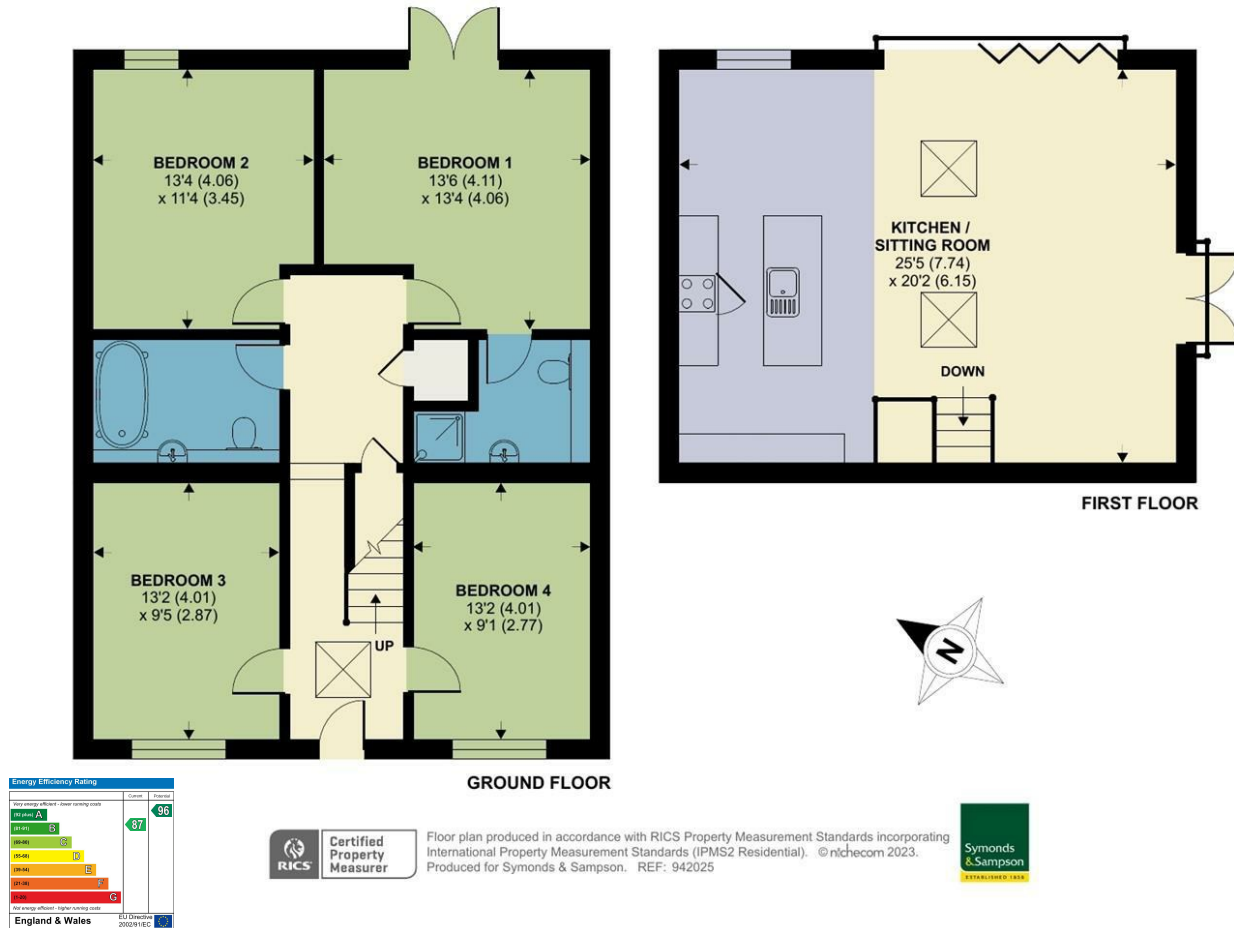




# Plumber Farm, Plumber, Sturminster Newton

Approximate Area = 1380 sq ft / 128.2 sq m

For identification only - Not to scale



GWB March 2025



01258 473766

sturminster@symondsandsampson.co.uk  
Symonds & Sampson LLP  
Agriculture House, Market Place,  
Sturminster Newton, Dorset DT10 1AR



Important Notice: Symonds & Sampson LLP and their Clients give notice that: 1. They have no authority to make or give any representations or warranties in relation to the property. These particulars do not form part of any offer or contract and must not be relied upon as statements or representations of fact. 2. Any areas, measurements or distances are approximate. The text, photographs and plans are for guidance only and are not necessarily comprehensive. It should not be assumed that the properties have all necessary planning, building regulation or other consents and Symonds and Sampson LLP have not tested any services, equipment or facilities. 3. We have not made any investigation into the existence or otherwise of any issues concerning pollution of the land, air or water contamination and the purchaser is responsible for making his/her own enquiries in this regard. 4. The property is sold subject to and with the benefit of all existing wayleaves, easements and rights of way whether public or private, specifically mentioned or not. The vendors shall not be required to define any such rights, privileges or advantages.

**SALES | LETTINGS | AUCTIONS | FARMS & LAND | COMMERCIAL | NEW HOMES | PLANNING & DEVELOPMENT**