



12 Byron Close, Dronfield, S18 1NG



12 Byron Close

Offers Around

£295,000

£300,000 - £310,000

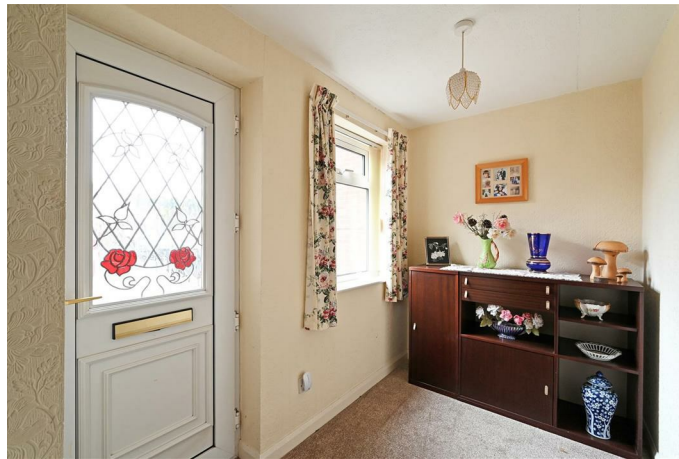
Extended to the side giving this excellent bungalow considerably more living space than the majority of similar bungalows of this type, this sale is a great opportunity to acquire a sensibly priced dwelling standing close to the golf club within this popular residential area.

Offered for sale with no upward chain, the property (which is double glazed) offers gas fired central heating and double glazing. Briefly comprising: good size reception hall, large extended dining kitchen, good size living room, nicely proportioned main bedroom and second double bedroom (both with fitted wardrobes), excellent shower room.

Undercroft garage and drive offering ample parking. Good size low maintenance rear garden which is mainly paved and has fantastic far reaching views across the valley.

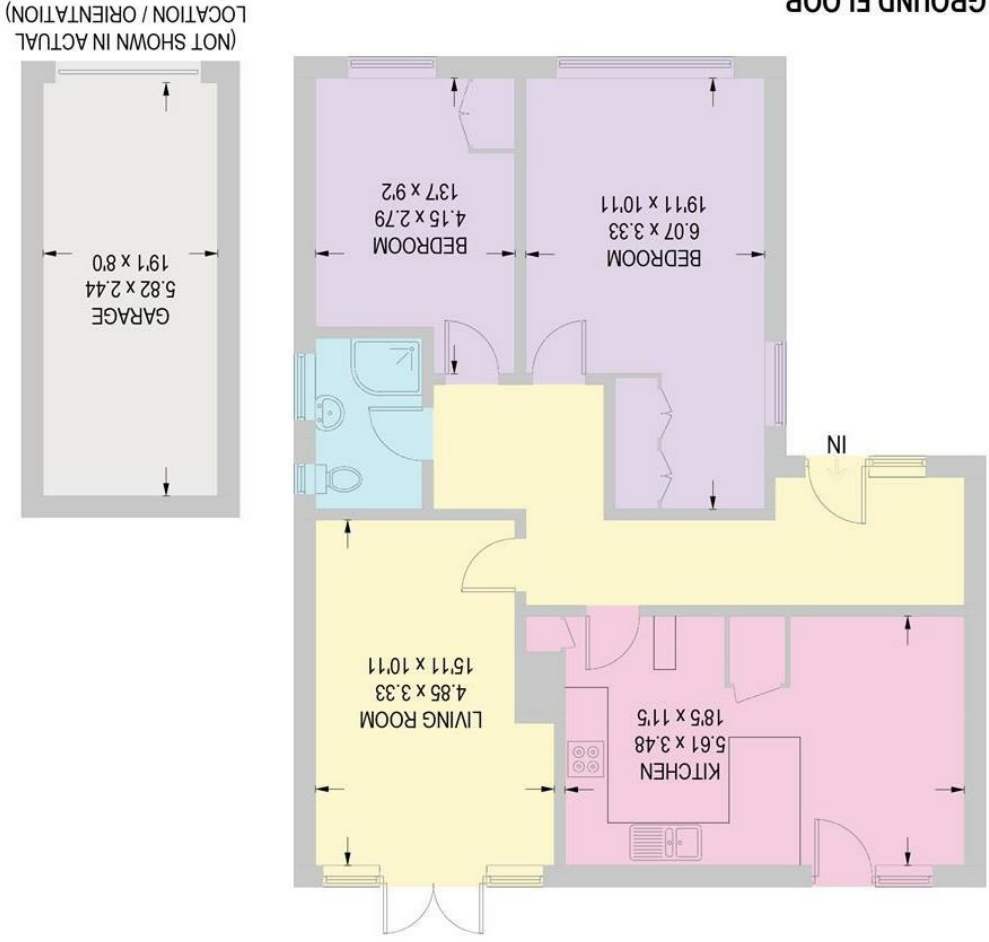
- Two double bedrooms
- Gas central heating via a combination boiler
- Feature fireplace in the lounge
- Low maintenance gardens with far reaching views
- Extended to offer spacious dining kitchen
- Undercroft garage and driveway
- Cul-de-sac position close to the golf course
- EPC: E
- Council Tax Band: Band D
- Tenure: Leasehold





12 BYRON CLOSE

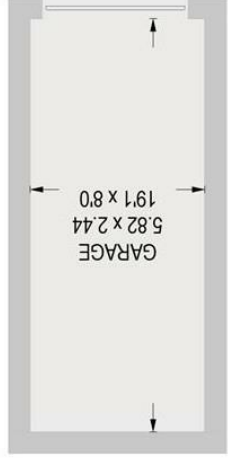
APPROXIMATE GROSS INTERNAL AREA = 85.4 SQ M / 919 SQ FT
 GARAGE = 14.2 SQ M / 153 SQ FT
 TOTAL = 99.6 SQ M / 1072 SQ FT



GROUND FLOOR

Illustration for identification purposes only, measurements are approximate, not to scale.

(NOT SHOWN IN ACTUAL LOCATION / ORIENTATION)



Matlock
 T: 01629 828250
 E: matlock@saxtonmee.co.uk

Bakewell
 T: 01629 815307
 E: bakewell@saxtonmee.co.uk

Hathersage
 T: 01433 650009
 E: hathersage@saxtonmee.co.uk

Dronfield
 T: 01246 290992
 E: dronfield@saxtonmee.co.uk

Banner Cross
 T: 0114 268 3241
 E: bannercross@saxtonmee.co.uk
 www.saxtonmee.co.uk

While we endeavour to make our sales particulars fair, accurate and reliable, they are only a general guide to the property and, accordingly, if there is any point, which is of particular importance to you, please contact the relevant office. The Agents have not tested any apparatus, equipment, fittings or services and so cannot verify they are in working order. The buyer is advised to obtain verification. Please note all the measurement details are approximate and should not be relied upon as exact. All plans, floor plans and maps are for guidance purposes only and are not to scale. Under no circumstances should they be relied upon as exact or for use in planning carpets and other such fixtures, fittings or furnishings. YOUR HOME IS AT RISK IF YOU DO NOT KEEP UP REPAYMENTS ON A MORTGAGE OR OTHER LOAN SECURED ON IT. A Life Assurance policy may be requested. Written Quotations of credit terms available on request.