



6 Birchen Close, Dronfield Woodhouse, Dronfield, S18 8ZD

Saxton Mee



# 6 Birchen Close Dronfield Woodhouse

£250,000

Sensibly priced reflecting the need for upgrading; this conveniently situated three bedroomed semi detached house stands only a few hundred meters from an excellent range of local amenities including shops, excellent schooling, park, doctors, pharmacist and bus services.

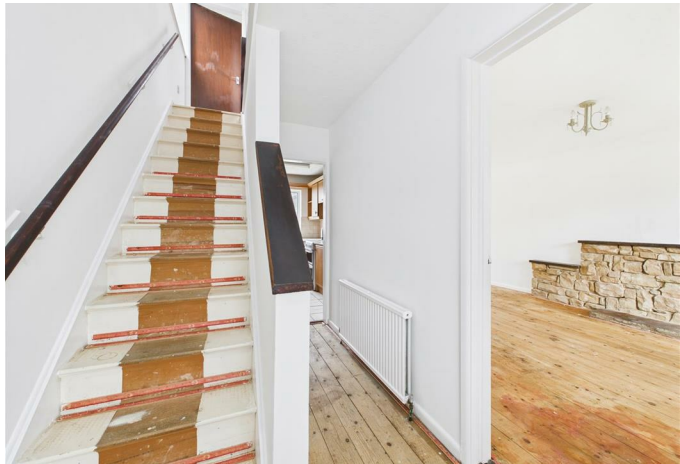
Offered for sale with vacant possession and no upward chain the property offers gas fired central heating, double glazing and briefly comprises: porch, hall, living/dining room, UPVC double glazed conservatory, fitted kitchen, utility, landing, two double bedrooms, single bedroom and shower room.

Outside: attached garage, mainly lawned good sized fairly level rear garden.

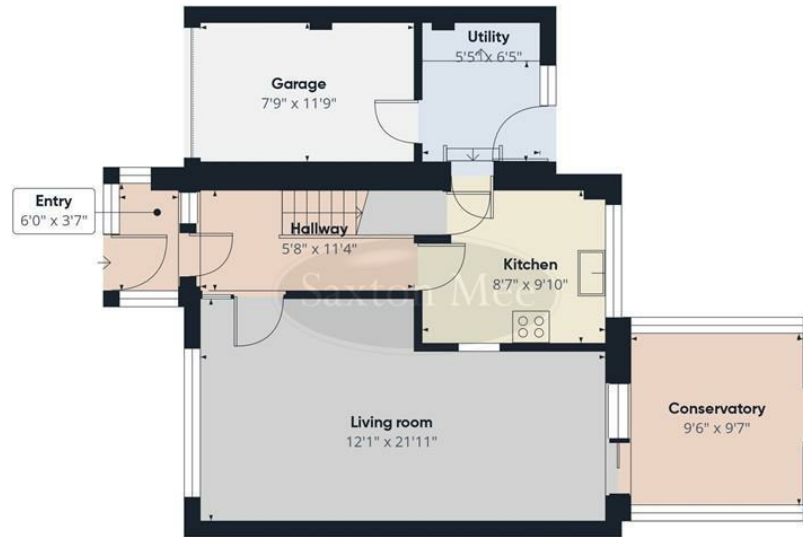
- Sensibly priced three bedroomed semi detached family home
- General upgrading and some modernisation required
- Most convenient locality
- Close to shops, schools and park
- Gas central heating and double glazing
- Recently decorated
- No upward chain and vacant possession
- Block paved drive and attached garage
- EPC: D
- Council Tax Band: Tenure:











Floor 0



Floor 1

**Approximate total area<sup>(1)</sup>**  
1006 ft<sup>2</sup>

(1) Excluding balconies and terraces

Calculations reference the RICS IPMS 3C standard. Measurements are approximate and not to scale. This floor plan is intended for illustration only.

GIRAFFE360

While we endeavour to make our sales particulars fair, accurate and reliable, they are only a general guide to the property and, accordingly, if there is any point, which is of particular importance to you, please contact the relevant office. The Agents have not tested any apparatus, equipment, fittings or services and so cannot verify they are in working order. The buyer is advised to obtain verification. Please note all the measurement details are approximate and should not be relied upon as exact. All plans, floor plans and maps are for guidance purposes only and are not to scale. Under no circumstances should they be relied upon as exact or for use in planning carpets and other such fixtures, fittings or furnishings. YOUR HOME IS AT RISK IF YOU DO NOT KEEP UP REPAYMENTS ON A MORTGAGE OR OTHER LOAN SECURED ON IT. 'A Life Assurance policy may be requested.' 'Written Quotations of credit terms available on request.'

Banner Cross  
T: 0114 268 3241  
E: [bannercross@saxtonmee.co.uk](mailto:bannercross@saxtonmee.co.uk)  
[www.saxtonmee.co.uk](http://www.saxtonmee.co.uk)

Dronfield  
T: 01246 290992  
E: [dronfield@saxtonmee.co.uk](mailto:dronfield@saxtonmee.co.uk)

Hathersage  
T: 01433 650009  
E: [hathersage@saxtonmee.co.uk](mailto:hathersage@saxtonmee.co.uk)

Bakewell  
T: 01629 815307  
E: [bakewell@saxtonmee.co.uk](mailto:bakewell@saxtonmee.co.uk)

Matlock  
T: 01629 828250  
E: [matlock@saxtonmee.co.uk](mailto:matlock@saxtonmee.co.uk)

