



70 Main Road, Holmesfield, Derbyshire, S18 7WT

Saxton Mee



# 70 Main Road

## £650,000

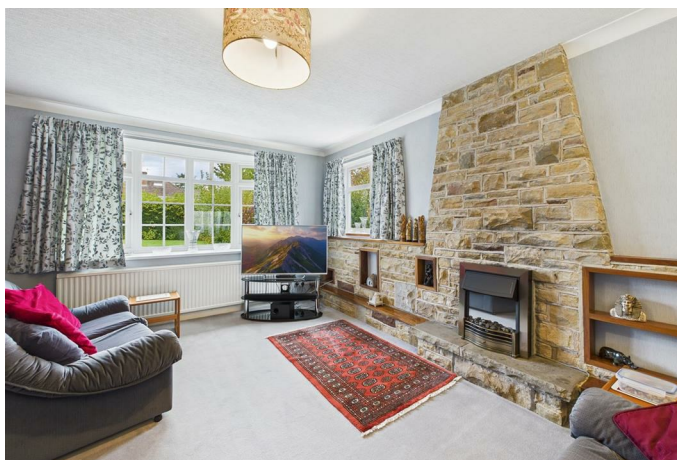
A great opportunity to acquire a four double bedroomed detached house which is enviably located on a private road set back from the main thoroughfare within this highly sought after village.

Backing on to fields and farmland the spacious accommodation is perfect for a family. Offering gas fired central heating and double glazing the accommodation which takes full advantage of breath taking views at the rear over the Cordwell Valley and briefly comprises: entrance porch, hall, downstairs cloakroom/WC, lounge with sliding doors to the dining room which in turn has doors into the spacious sun room at the rear. Breakfast kitchen with door into the garage. First floor landing with large walk in cupboard, four double bedrooms and superb recently installed shower room.

Outside: driveway with pretty garden to the front, large mainly lawned garden to the rear with impressive views over the valley and beyond.



- Four double bedrooms
- Spacious accommodation throughout
- Breathtaking views over the Cordwell Valley
- Potential to create a perfect family home
- Gas central heating and double glazing
- Sought after village location
- EPC: tbc
- Council tax Band: F
- Freehold









Floor 0



Floor 1

Approximate total area<sup>(1)</sup>

1707 ft<sup>2</sup>

Reduced headroom

7 ft<sup>2</sup>

(1) Excluding balconies and terraces.

Reduced headroom

Below 5 ft

Calculations reference the RICS IPMS: 3C standard. Measurements are approximate and not to scale. This floor plan is intended for illustration only.

GIRAFFE360

While we endeavour to make our sales particulars fair, accurate and reliable, they are only a general guide to the property and, accordingly, if there is any point, which is of particular importance to you, please contact the relevant office. The Agents have not tested any apparatus, equipment, fittings or services and so cannot verify they are in working order. The buyer is advised to obtain verification. Please note all the measurement details are approximate and should not be relied upon as exact. All plans, floor plans and maps are for guidance purposes only and are not to scale. Under no circumstances should they be relied upon as exact or for use in planning carpets and other such fixtures, fittings or furnishings. YOUR HOME IS AT RISK IF YOU DO NOT KEEP UP REPAYMENTS ON A MORTGAGE OR OTHER LOAN SECURED ON IT. 'A Life Assurance policy may be requested.' 'Written Quotations of credit terms available on request.'

Banner Cross  
T: 0114 268 3241  
E: [bannercross@saxtonmee.co.uk](mailto:bannercross@saxtonmee.co.uk)  
[www.saxtonmee.co.uk](http://www.saxtonmee.co.uk)

Dronfield  
T: 01246 290992  
E: [dronfield@saxtonmee.co.uk](mailto:dronfield@saxtonmee.co.uk)

Hathersage  
T: 01433 650009  
E: [hathersage@saxtonmee.co.uk](mailto:hathersage@saxtonmee.co.uk)

Bakewell  
T: 01629 815307  
E: [bakewell@saxtonmee.co.uk](mailto:bakewell@saxtonmee.co.uk)

Matlock  
T: 01629 828250  
E: [matlock@saxtonmee.co.uk](mailto:matlock@saxtonmee.co.uk)

