



11 Ennerdale Close, Dronfield Woodhouse, Dronfield, Derbyshire, S18 8PL

Saxton Mee

11 Ennerdale Close

Dronfield Woodhouse

£210,000

This attractively presented two bedroomed semi detached house is equally ideal for a first time buyer, couple, or the retired being enviably located towards the head of the cul-de-sac.

The property offers gas fired central heating via an Alpha combination boiler fitted in December 2020, uPVC double glazing and briefly comprises: porch, generous living room, good sized dining kitchen which is the preferred layout for this type of property (offering a larger dining kitchen). Landing, double bedroom one, second double bedroom and excellent bathroom.

Driveway with ample off road parking for several vehicles, pleasant rear garden with patio, lawn and well stocked beds.

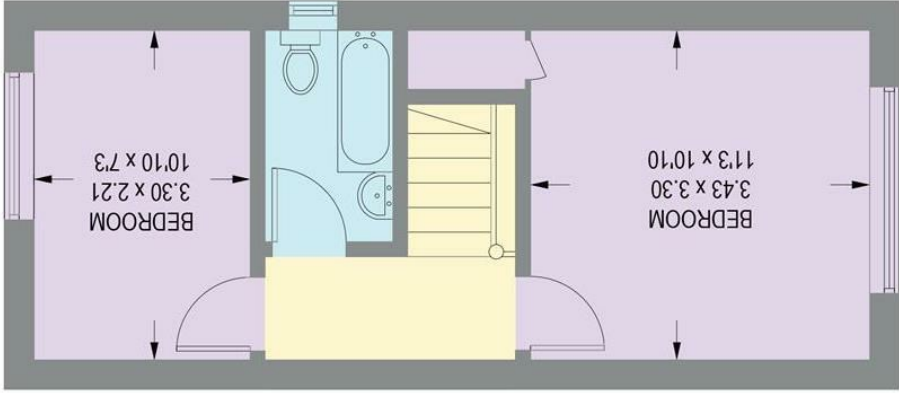
- Attractively presented
- Immaculately maintained
- Favoured corner position
- Ample parking/drive
- Beautiful rear garden
- New combination boiler December 2020
- EPC: tbc
- Council Tax Band: B
- Tenure: Freehold





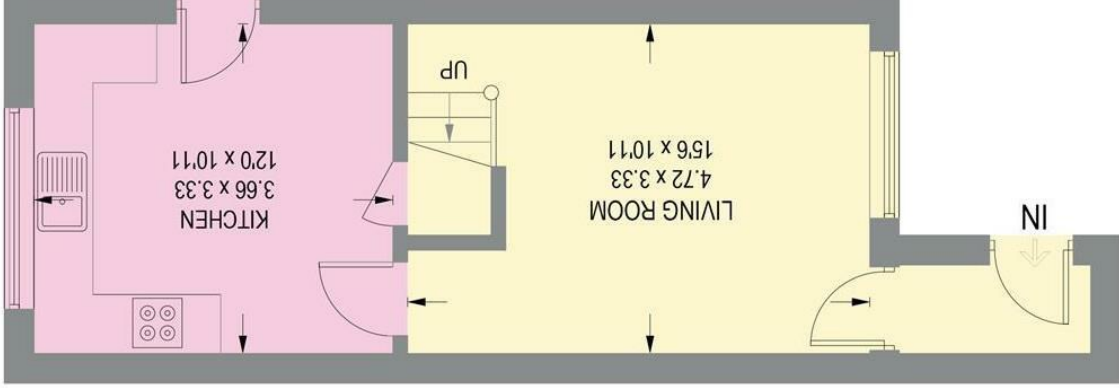
11 ENNERDALE CLOSE

APPROXIMATE GROSS INTERNAL AREA = 59.2 SQ M / 637 SQ FT



FIRST FLOOR

28.5 SQ M / 307 SQ FT



GROUND FLOOR

30.7 SQ M / 330 SQ FT

Illustration for identification purposes only, measurements are approximate, not to scale.

While we endeavour to make our sales particulars fair, accurate and reliable, they are only a general guide to the property and, accordingly, if there is any point, which is of particular importance to you, please contact the relevant office. The Agents have not tested any apparatus, equipment, fittings or services and so cannot verify they are in working order. The buyer is advised to obtain verification. Please note all the measurement details are approximate and should not be relied upon as exact. All plans, floor plans and maps are for guidance purposes only and are not to scale. Under no circumstances should they be relied upon as exact or for use in planning carpets and other such fixtures, fittings or furnishings. YOUR HOME IS AT RISK IF YOU DO NOT KEEP UP REPAYMENTS ON A MORTGAGE OR OTHER LOAN SECURED ON IT. A Life Assurance policy may be requested. Written Quotations of credit terms available on request.



Banner Cross	T: 0114 268 3241	E: bannercross@saxtonmee.co.uk	www.saxtonmee.co.uk
Dronfield	T: 01246 290992	E: dronfield@saxtonmee.co.uk	
Hathersage	T: 01433 650009	E: hathersage@saxtonmee.co.uk	
Bakewell	T: 01629 815307	E: bakewell@saxtonmee.co.uk	
Matlock	T: 01629 828250	E: matlock@saxtonmee.co.uk	