



3 Limekiln Way, Barlborough, Chesterfield, S43 4WB

Saxton Mee

3 Limekiln Way

Barlborough

£259,950

Offered for sale with no upward chain is this sensibly priced three bedroomed detached family home, situated in a popular residential location with ease of access to the motorway network links for commuting north and south.

The property offers good size accommodation and gardens with double glazing, gas central heating (being serviced in June 2025), and a large conservatory overlooking the garden. The accommodation briefly comprises: entrance lobby, downstairs cloakroom/WC, lounge with feature fireplace and archway to the dining room which has French doors leading into the excellent uPVC double glazed conservatory. Breakfast kitchen with space for appliances and to include the range cooker. Stairs to the first floor landing off which opens the master bedroom with wardrobes to one wall and en-suite shower room, double bedroom two and good size single bedroom three. Family bathroom with suite in white.

Outside: lawned garden to the front, driveway parking and integral single garage. Private enclosed rear garden with lawns, raised decked corner entertaining terrace with artificial grass, mature shrubs and trees.



- Superb three bedroomed detached family home
- Excellent links to the M1 motorway
- No upward chain
- Private enclosed garden
- En-suite to the master bedroom
- Range cooker to be included in the sale
- Large conservatory overlooking the garden
- Integral single garage
- EPC: tbc
- Freehold / Council Tax Band: C



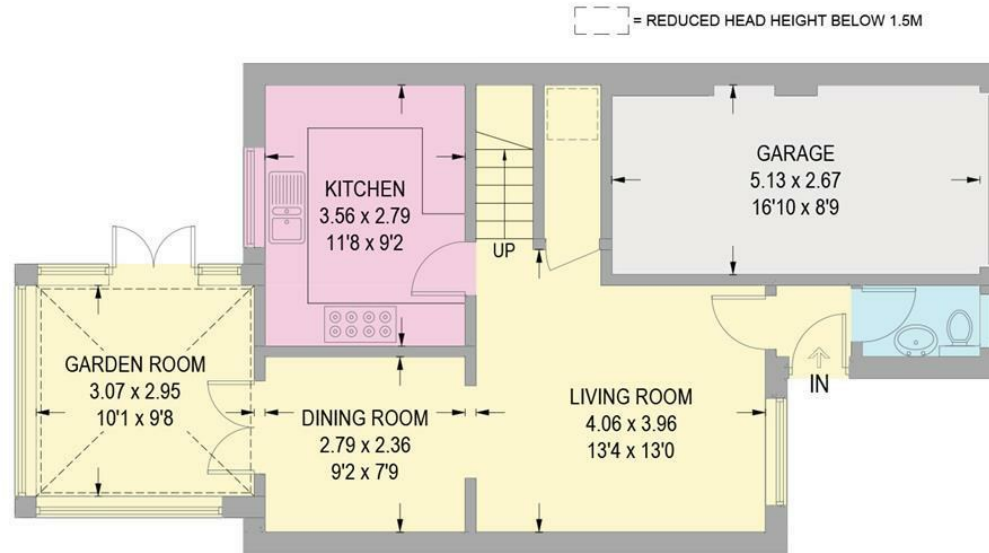


3 LIMEKILN WAY

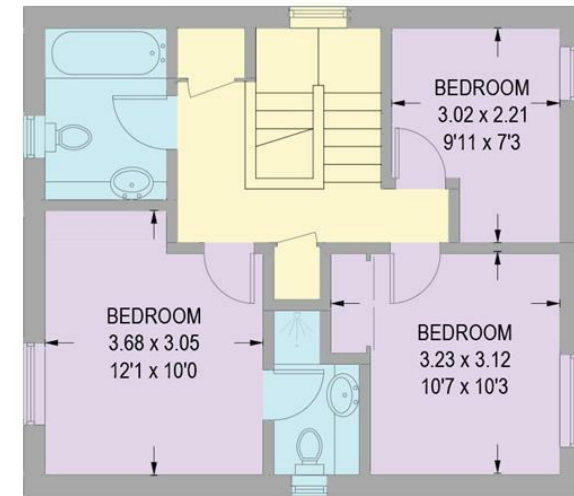
APPROXIMATE GROSS INTERNAL AREA = 95.9 SQ M / 1032 SQ FT

GARAGE = 13.6 SQ M / 146 SQ FT

TOTAL = 109.5 SQ M / 1178 SQ FT



GROUND FLOOR
50.9 SQ M / 548 SQ FT



FIRST FLOOR
45 SQ M / 484 SQ FT

Illustration for identification purposes only,
measurements are approximate, not to scale.

While we endeavour to make our sales particulars fair, accurate and reliable, they are only a general guide to the property and, accordingly, if there is any point, which is of particular importance to you, please contact the relevant office. The Agents have not tested any apparatus, equipment, fittings or services and so cannot verify they are in working order. The buyer is advised to obtain verification. Please note all the measurement details are approximate and should not be relied upon as exact. All plans, floor plans and maps are for guidance purposes only and are not to scale. Under no circumstances should they be relied upon as exact or for use in planning carpets and other such fixtures, fittings or furnishings. YOUR HOME IS AT RISK IF YOU DO NOT KEEP UP REPAYMENTS ON A MORTGAGE OR OTHER LOAN SECURED ON IT. 'A Life Assurance policy may be requested.' 'Written Quotations of credit terms available on request.'

Banner Cross
T: 0114 268 3241
E: bannercross@saxtonmee.co.uk
www.saxtonmee.co.uk

Dronfield
T: 01246 290992
E: dronfield@saxtonmee.co.uk

Hathersage
T: 01433 650009
E: hathersage@saxtonmee.co.uk

Bakewell
T: 01629 815307
E: bakewell@saxtonmee.co.uk

Matlock
T: 01629 828250
E: matlock@saxtonmee.co.uk

