



11 Longcroft Avenue, Dronfield Woodhouse, Dronfield, S18 8PJ

Saxton Mee



# 11 Longcroft Avenue

## Dronfield Woodhouse

Price Guide

# £550,000

£550,000 - £575,000

A superb opportunity to acquire this well proportioned four double bedroomed detached family home, situated on an enviable cul-de-sac with there being a good range of local amenities close by including renowned schooling, shops, and countryside walks.

The property is in need of some general modernisation throughout but has gas central heating and uPVC double glazing and is complemented by a generous westerly facing rear garden.

The spacious accommodation briefly comprises: entrance hall, downstairs cloakroom/WC lounge, separate dining room, well equipped kitchen with a range of built in appliances, sitting room with sliding doors leading onto the gardens. Large side porch.

First floor landing, master bedroom one to the front with fitted wardrobes and over bed cupboards, double bedroom two to the rear, again with fitted wardrobes. Double bedrooms three and four.

Outside see ample off road parking for several vehicles, attached double garage and good size mainly lawned rear garden with block paved entertaining terrace and established shrub beds.



- Excellent four double bedroomed detached house
- In need of general updating to fittings
- Attached double garage
- Gas central heating and uPVC double glazing
- No upward chain
- Generous westerly facing garden
- Sought after cul-de-sac close to local amenities
- EPC
- Council Tax Band
- Tenure:









# 11 LONGCROFT AVENUE

APPROXIMATE GROSS INTERNAL AREA = 133.9 SQ M / 1441 SQ FT

GARAGE = 30.5 SQ M / 328 SQ FT

TOTAL = 164.4 SQ M / 1769 SQ FT

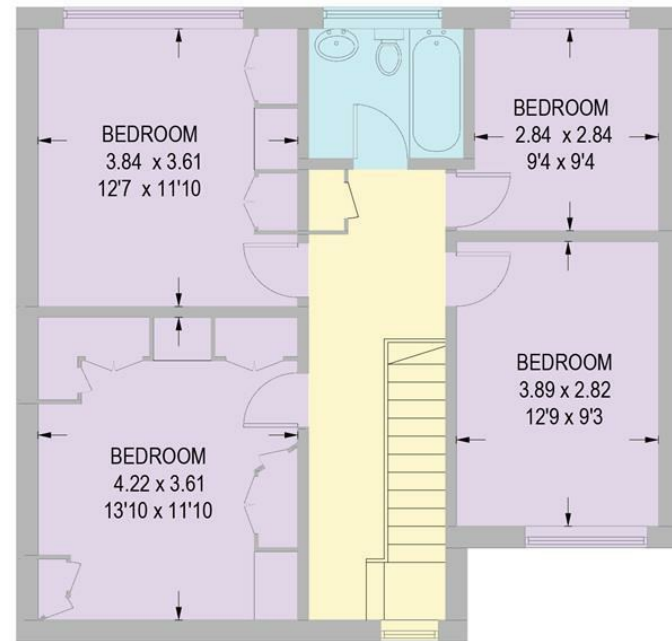
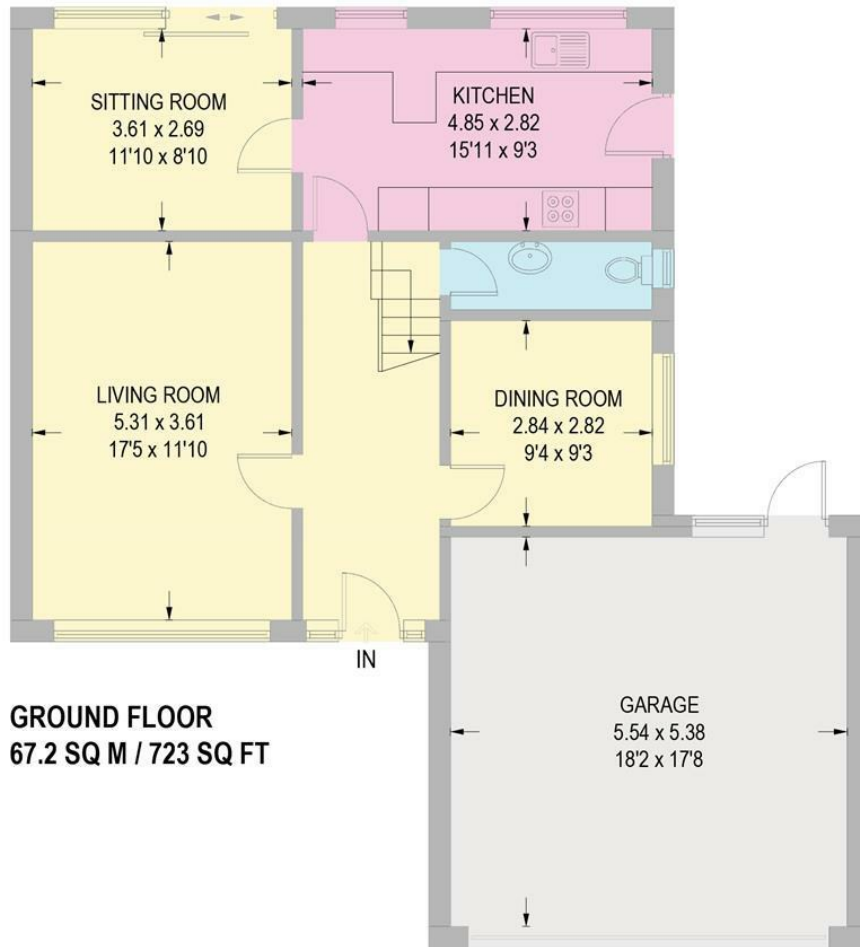


Illustration for identification purposes only,  
measurements are approximate, not to scale.

While we endeavour to make our sales particulars fair, accurate and reliable, they are only a general guide to the property and, accordingly, if there is any point, which is of particular importance to you, please contact the relevant office. The Agents have not tested any apparatus, equipment, fittings or services and so cannot verify they are in working order. The buyer is advised to obtain verification. Please note all the measurement details are approximate and should not be relied upon as exact. All plans, floor plans and maps are for guidance purposes only and are not to scale. Under no circumstances should they be relied upon as exact or for use in planning carpets and other such fixtures, fittings or furnishings. YOUR HOME IS AT RISK IF YOU DO NOT KEEP UP REPAYMENTS ON A MORTGAGE OR OTHER LOAN SECURED ON IT. 'A Life Assurance policy may be requested.' 'Written Quotations of credit terms available on request.'

Banner Cross  
T: 0114 268 3241  
E: [bannercross@saxtonmee.co.uk](mailto:bannercross@saxtonmee.co.uk)  
[www.saxtonmee.co.uk](http://www.saxtonmee.co.uk)

Dronfield  
T: 01246 290992  
E: [dronfield@saxtonmee.co.uk](mailto:dronfield@saxtonmee.co.uk)

Hathersage  
T: 01433 650009  
E: [hathersage@saxtonmee.co.uk](mailto:hathersage@saxtonmee.co.uk)

Bakewell  
T: 01629 815307  
E: [bakewell@saxtonmee.co.uk](mailto:bakewell@saxtonmee.co.uk)

Matlock  
T: 01629 828250  
E: [matlock@saxtonmee.co.uk](mailto:matlock@saxtonmee.co.uk)

