



11a Woodlands, Brimington, Chesterfield, Derbyshire, S43 1BE

Saxton Mee

11a Woodlands

Birmingham

£142,500

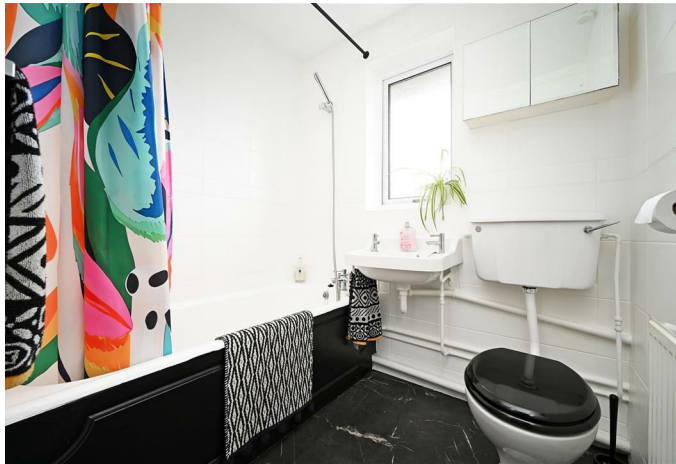
Offered for sale with no upward chain is this well presented two double bedroomed mid town house with off road parking and open aspect to the front and private enclosed rear garden.

Pleasantly situated on a quiet cul-de-sac yet within easy reach of local amenities and countryside walks, the uPVC double glazed and gas fired centrally heated accommodation briefly comprises: entrance hall with built in storage cupboards, spacious recently decorated and carpeted lounge/dining room, fitted kitchen with a range of units and built in oven and hob. First floor landing, two double bedrooms (both with fitted wardrobes) and bathroom with a white suite.

Outside: off road parking to the front, generous rear garden with brick built store, covered seating areas along with patio entertaining, well stocked flower and shrub beds.

- No upward chain
- Surprisingly spacious and well presented accommodation
- Gas central heating and double glazing
- Two double bedrooms
- Ideal for first time buyer, young family or investor
- Host of local amenities nearby
- Generous private garden with covered seating and patio entertaining areas
- EPC: C
- Freehold
- Council Tax Band: A



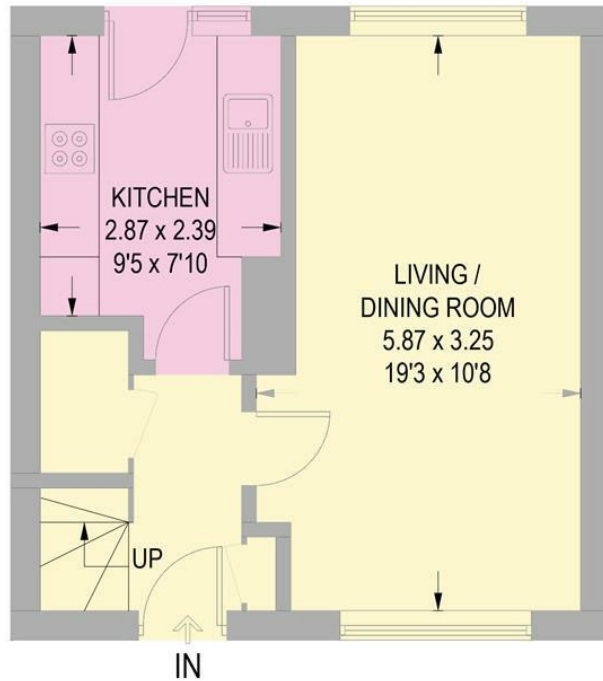


11A WOODLANDS

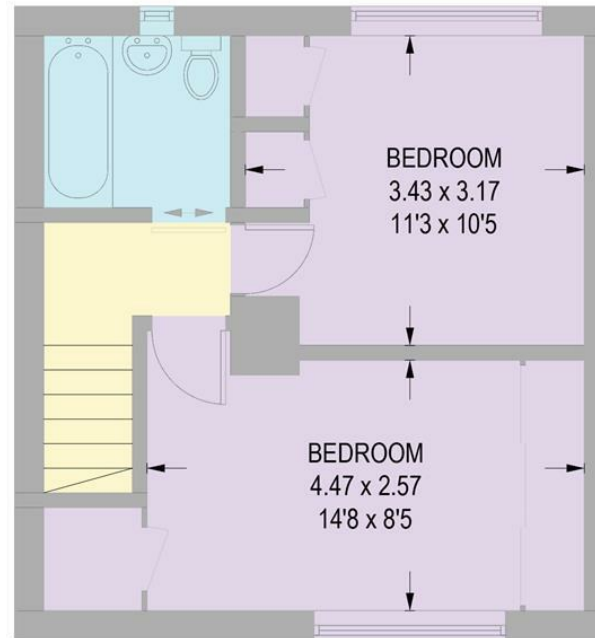
APPROXIMATE GROSS INTERNAL AREA = 64.6 SQ M / 695 SQ FT

STORE = 6.1 SQ M / 66 SQ FT

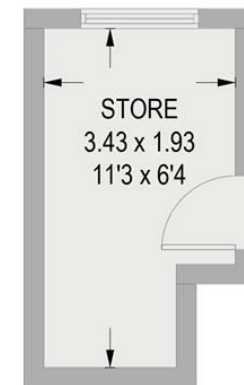
TOTAL = 70.7 SQ M / 761 SQ FT



GROUND FLOOR
32.4 SQ M / 349 SQ FT



FIRST FLOOR
32.2 SQ M / 346 SQ FT



(NOT SHOWN IN ACTUAL
LOCATION / ORIENTATION)

Illustration for identification purposes only,
measurements are approximate, not to scale.

While we endeavour to make our sales particulars fair, accurate and reliable, they are only a general guide to the property and, accordingly, if there is any point, which is of particular importance to you, please contact the relevant office. The Agents have not tested any apparatus, equipment, fittings or services and so cannot verify they are in working order. The buyer is advised to obtain verification. Please note all the measurement details are approximate and should not be relied upon as exact. All plans, floor plans and maps are for guidance purposes only and are not to scale. Under no circumstances should they be relied upon as exact or for use in planning carpets and other such fixtures, fittings or furnishings. YOUR HOME IS AT RISK IF YOU DO NOT KEEP UP REPAYMENTS ON A MORTGAGE OR OTHER LOAN SECURED ON IT. 'A Life Assurance policy may be requested.' 'Written Quotations of credit terms available on request.'

Banner Cross
T: 0114 268 3241
E: bannercross@saxtonmee.co.uk
www.saxtonmee.co.uk

Dronfield
T: 01246 290992
E: dronfield@saxtonmee.co.uk

Hathersage
T: 01433 650009
E: hathersage@saxtonmee.co.uk

Bakewell
T: 01629 815307
E: bakewell@saxtonmee.co.uk

Matlock
T: 01629 828250
E: matlock@saxtonmee.co.uk

