



29 Buttermere Drive, Dronfield Woodhouse, Dronfield, S18 8PX

Saxton Mee

29 Buttermere Drive

Dronfield Woodhouse

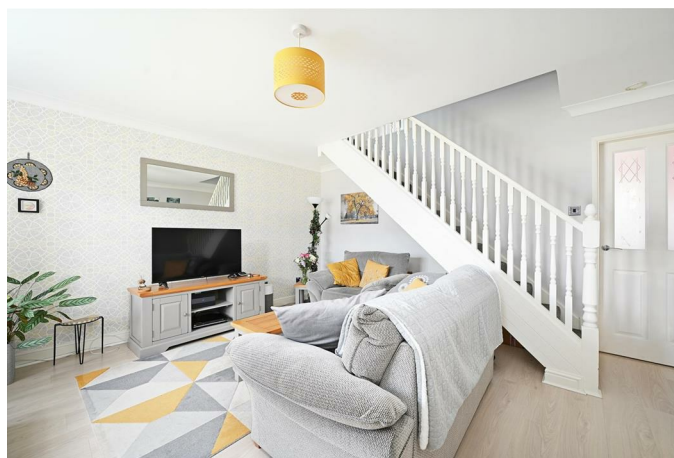
£235,000

A perfect opportunity for first time buyers or a young family to acquire an exceptionally well presented three bedroomed mid town house which forms part of this small established cul-de-sac.

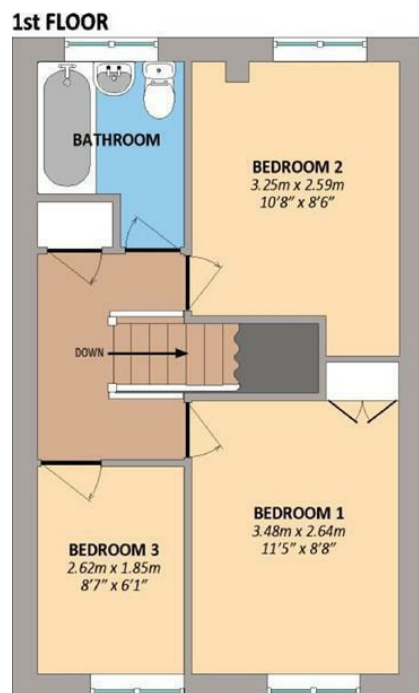
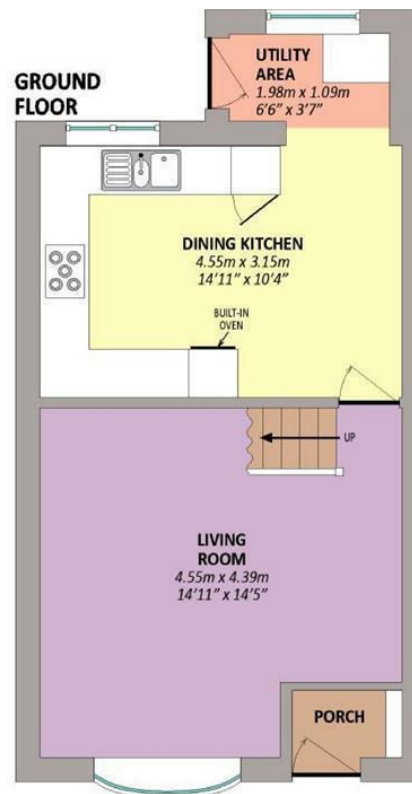
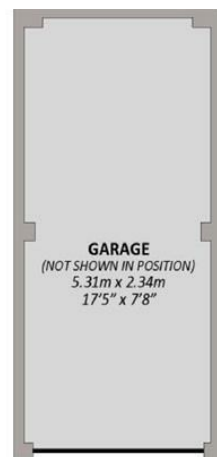
There are a host of local amenities close by including renowned schooling, Sindelfingen Park and shops at Pentland Road. Offered for sale with no upward chain the property benefits from uPVC double glazing and gas fired central heating with a new Worcester combination boiler installed in October 2019. Entrance hall, living room, well equipped dining kitchen, first floor landing, two double bedrooms, single bedroom/study and bathroom with electric shower over the bath.

Slightly off lying single garage with the lovely rear garden having been landscaped with ease of maintenance in mind and includes an Indian stone patio which has been recently laid.

- Ideal for the first time buyer, young family or investor
- Well presented accommodation
- Favoured cul-de-sac position
- Easy reach of shops, schools and park
- Garage and low maintenance landscaped garden
- Three bedrooms
- EPC: D
- Tenure: Freehold
- Council Tax Band: A
- No Chain







29 BUTTERMERE DRIVE DRONFIELD

While we endeavour to make our sales particulars fair, accurate and reliable, they are only a general guide to the property and, accordingly, if there is any point, which is of particular importance to you, please contact the relevant office. The Agents have not tested any apparatus, equipment, fittings or services and so cannot verify they are in working order. The buyer is advised to obtain verification. Please note all the measurement details are approximate and should not be relied upon as exact. All plans, floor plans and maps are for guidance purposes only and are not to scale. Under no circumstances should they be relied upon as exact or for use in planning carpets and other such fixtures, fittings or furnishings. YOUR HOME IS AT RISK IF YOU DO NOT KEEP UP REPAYMENTS ON A MORTGAGE OR OTHER LOAN SECURED ON IT. 'A Life Assurance policy may be requested.' 'Written Quotations of credit terms available on request.'

Banner Cross
T: 0114 268 3241
E: bannercross@saxtonmee.co.uk
www.saxtonmee.co.uk

Dronfield
T: 01246 290992
E: dronfield@saxtonmee.co.uk

Hathersage
T: 01433 650009
E: hathersage@saxtonmee.co.uk

Bakewell
T: 01629 815307
E: bakewell@saxtonmee.co.uk

Matlock
T: 01629 828250
E: matlock@saxtonmee.co.uk

